

VOR/DME MHK <b>110.2</b> Chan <b>39</b>	APP CRS <b>031°</b>	Rwy Idg TDZE Apt Elev	<b>7000</b> <b>1056</b> <b>1066</b>
---	------------------------	-----------------------------	---

# VOR RWY 3

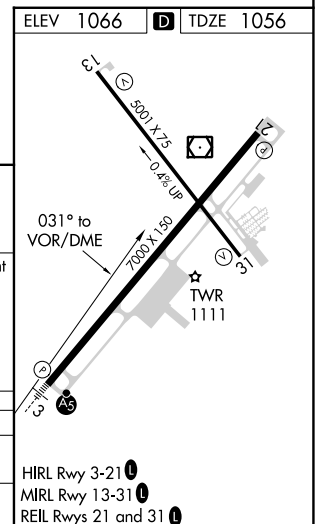
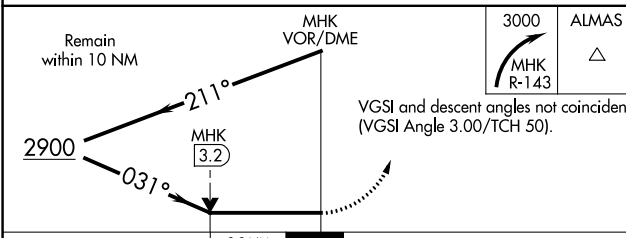
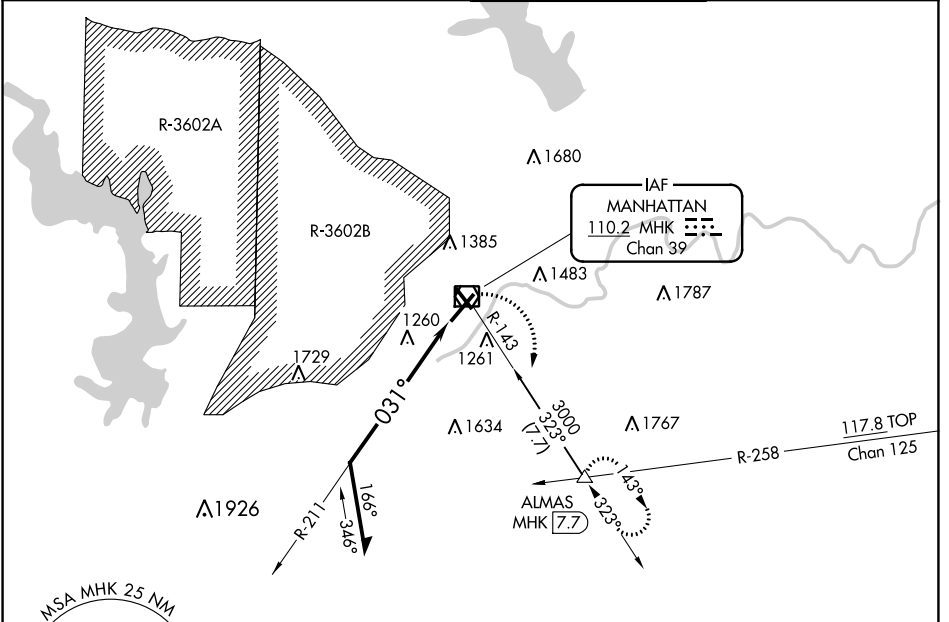
MANHATTAN RGNL (MHK)

**⚠** Visibility reduction by helicopters NA. Circling NA west of Rwy 3-21. When local altimeter setting not received, use Marshall AAF altimeter setting and increase all MDA 20 feet. VDP NA with Marshall AAF altimeter setting.

**MALSR**  
**A5**

**MISSED APPROACH:** Climbing right turn to 3000 via MHK VOR/DME R-143 to ALMAS INT/MHK 7.7 DME and hold.

ASOS <b>119.075</b>	MARSHALL GCA * <b>121.25 254.35</b>	MANHATTAN TOWER * <b>118.55 (CTAF) 0</b>	GND CON <b>121.85</b>
------------------------	--	---	--------------------------



CATEGORY	A	B	C	D
S-3	1820-1 764 (800-1)	1820-1 1/4 764 (800-1 1/4)	1820-1 3/4 764 (800-1 3/4)	1820-2 764 (800-2)
CIRCLING	1820-1 754 (800-1)	1820-1 1/4 754 (800-1 1/4)	1920-2 1/2 854 (900-2 1/2)	1920-2 3/4 854 (900-2 3/4)

HIRL Rwy 3-21  
MRL Rwy 13-31  
REL Rws 21 and 31

NC-2, 23 FEB 2023 to 23 MAR 2023

NC-2, 23 FEB 2023 to 23 MAR 2023