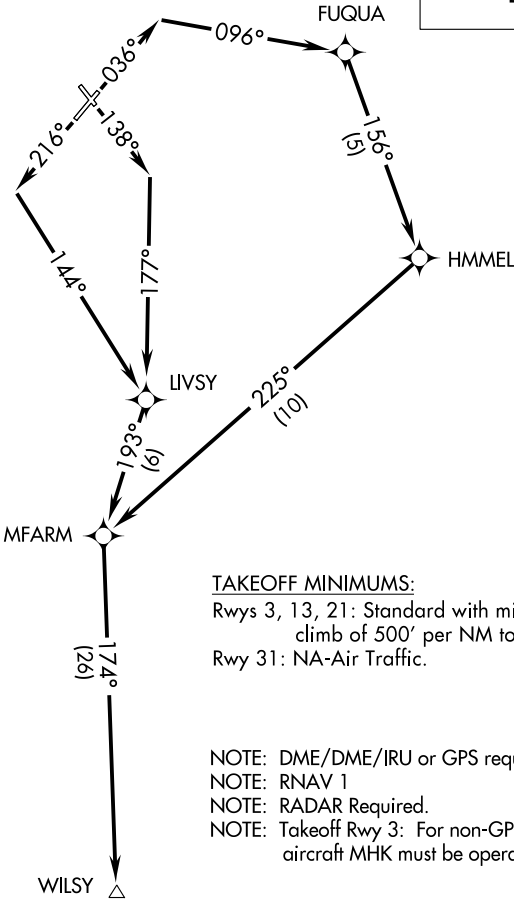


ASOS 119.075
GND CON 121.85
MANHATTAN TOWER ★
118.55 (CTAF)
MARSHALL AAF GCA ★
121.25 254.35
KANSAS CITY CENTER
127.35 257.975

TOP ALTITUDE:
4000



TAKEOFF MINIMUMS:
Rwys 3, 13, 21: Standard with minimum
climb of 500' per NM to 1600.
Rwy 31: NA-Air Traffic.

NOTE: DME/DME/IRU or GPS required.
NOTE: RNAV 1
NOTE: RADAR Required.
NOTE: Takeoff Rwy 3: For non-GPS equipped
aircraft MHK must be operational.

NOTE: Chart not to scale.

▼

DEPARTURE ROUTE DESCRIPTION

TAKEOFF RWY 3: Climb heading 036° to intercept course 096° to FUQUA, then on track 156° to HMMEL, then on track 225° to MFARM. thence. . . .

TAKEOFF RWY 13: Climb heading 138° to intercept course 177° to LIVSY, then on track 193° to MFARM. thence. . . .

TAKEOFF RWY 21: Climb heading 216° to intercept course 144° to LIVSY, then on track 193° to MFARM. thence. . . .

. . . .on track 174° to WILSY. Maintain 4000 or as assigned by ATC. Expect filed altitude ten minutes after departure.

LOST COMMUNICATIONS: Standard

NC-2, 23 FEB 2023 to 23 MAR 2023

NC-2, 23 FEB 2023 to 23 MAR 2023