

VOR/DME CUZ 108.2 Chan 19	APP CRS 135°	Rwy Idg TDZE Apt Elev	4203 2546 2546
--	------------------------	-----------------------------	---

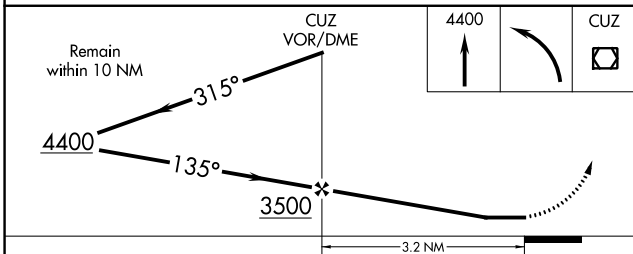
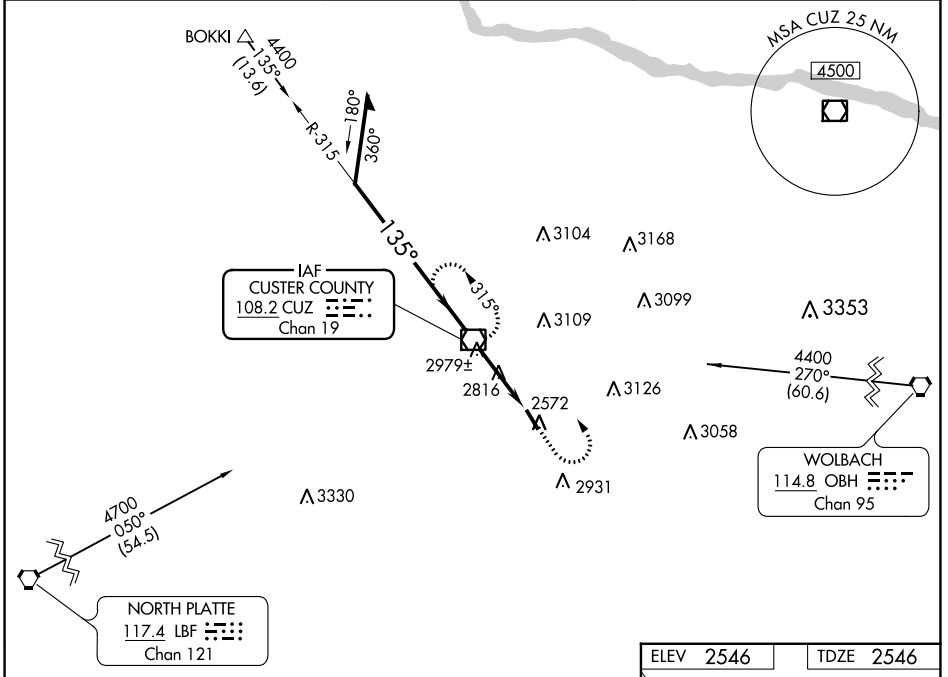
VOR RWY 14

BROKEN BOW MUNI/KEITH GLAZE FLD (BBW)

⚠ When local altimeter setting not received; use North Platte Rgnl/Lee Bird Fld altimeter setting. Rwy 14 helicopter visibility reduction below 3/4 SM NA.

⚠ MISSED APPROACH: Climb to 4400 then left turn direct CUZ VOR/DME and hold.

ASOS 120.0	DENVER CENTER 132.7 226.675	UNICOM 122.8 (CTAF) 0
----------------------	---------------------------------------	---------------------------------



ELEV 2546	TDZE 2546
-----------	-----------

135° 3.2 NM from FAF

REIL Rwy 14 0
MIRL Rwy 14-32 0
FAF to MAP 3.2 NM

Knots	60	90	120	150	180
Min:Sec	3:12	2:08	1:36	1:17	1:04

CATEGORY	A	B	C	D
S-14	3240-1	694 (700-1)		NA
CIRCLING	3280-1	734 (800-1)		NA
NORTH PLATTE RGNL/LEE BIRD FLD ALTIMETER SETTING MINIMUMS				
S-14	3380-1 834 (900-1)	3380-1½ 834 (900-1½)		NA
CIRCLING	3440-1½	894 (900-1½)		NA

NC-2, 23 FEB 2023 to 23 MAR 2023

NC-2, 23 FEB 2023 to 23 MAR 2023