

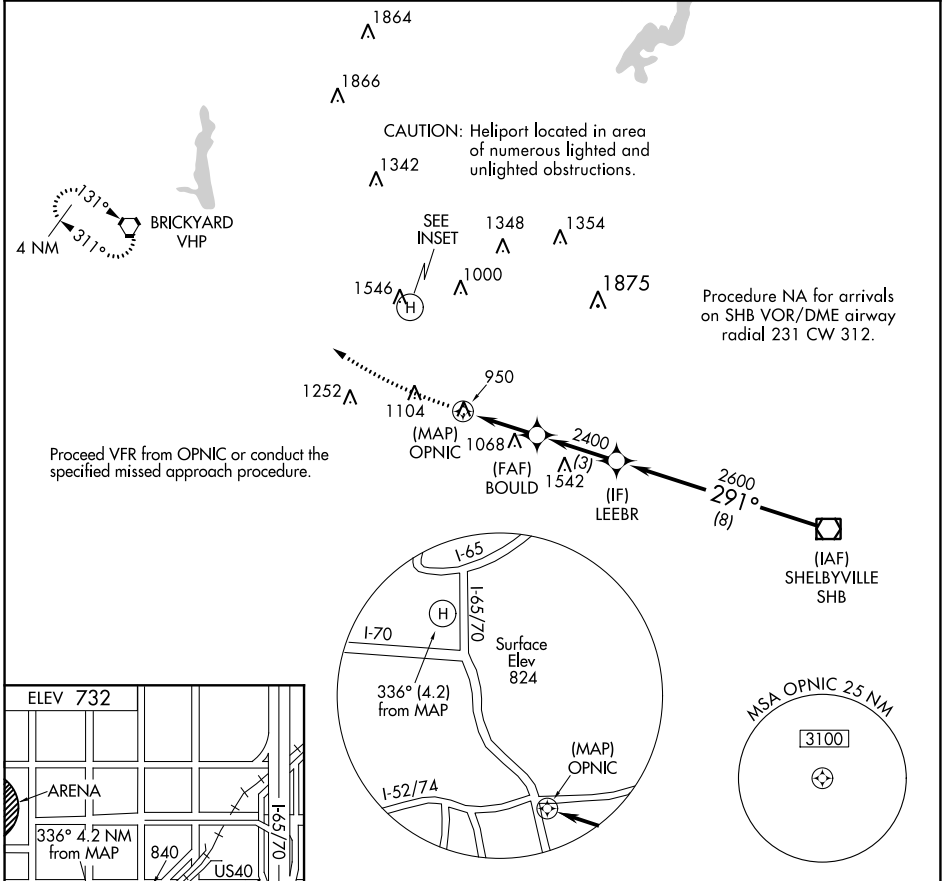
# COPTER RNAV (GPS) 291°

INDIANAPOLIS DOWNTOWN (8A4)

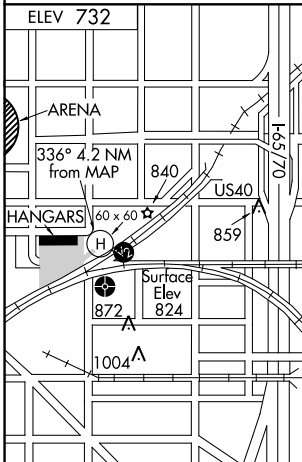
APP CRS <b>291°</b>	Rwy Idg Surf Elev Apt Elev	<b>N/A</b> <b>824</b> <b>732</b>
------------------------	----------------------------------	--

RNP APCH - GPS	<p>▲ NA Limit final and missed approach airspeed to 70 KIAS. When local altimeter setting not received, use Indianapolis Intl altimeter setting and increase MDA 40 feet. ACTIVATE High Intensity Pad Lights-CTAF.</p>	<p>MISSED APPROACH: Climb to 1500 then climbing right turn to 3000 direct VHP VORTAC and hold.</p>
----------------	--	--

AWOS-3 <b>135.525</b>	INDIANAPOLIS APP CON <b>125.275 317.8</b>	UNICOM <b>123.05 (CTAF) 0</b>
--------------------------	--	----------------------------------



Proceed VFR from OPNIC or conduct the specified missed approach procedure.



1500	3000	VHP	LEEBR	SHB VOR/DME
Proceed VFR from MAP		OPNIC	BOULD	
		2400	291°	2600
		291°	2600	2600
		2.8 NM	3 NM	8 NM
CATEGORY COPTER				
LNAV MDA 1340-¾ 516 (600-¾)				

EC-2, 23 FEB 2023 to 23 MAR 2023

EC-2, 23 FEB 2023 to 23 MAR 2023