

AWOS-3 118.375 MIAMI DEP CON 125.5 354.1	TOP ALTITUDE: ASSIGNED BY ATC	RNAV 1 - DME/DME/IRU or GPS. RADAR required.
---------------------------------------------------	------------------------------------------	-----------------------------------------------------

TAKEOFF MINIMUMS

Rwy 10: Standard with minimum climb of 500' per NM to 2500.
Rwy 18, 28: Standard with minimum climb of 500' per NM to 1900.
Rwy 36: Standard with minimum climb of 500' per NM to 2200.

DEPARTURE ROUTE DESCRIPTION

TAKEOFF RUNWAY 10: Climb on heading 096° to 2000, or as assigned by ATC for RADAR vectors to cross LIFRR at 4000, thence. . . .

TAKEOFF RUNWAY 18: Climb on heading 185° or as assigned by ATC for RADAR vectors to cross LIFRR at 4000, thence. . . .

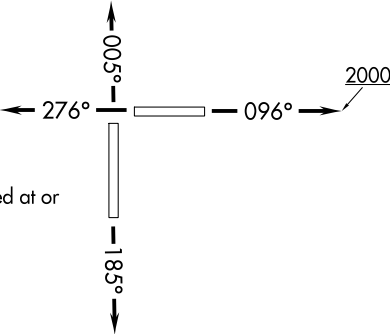
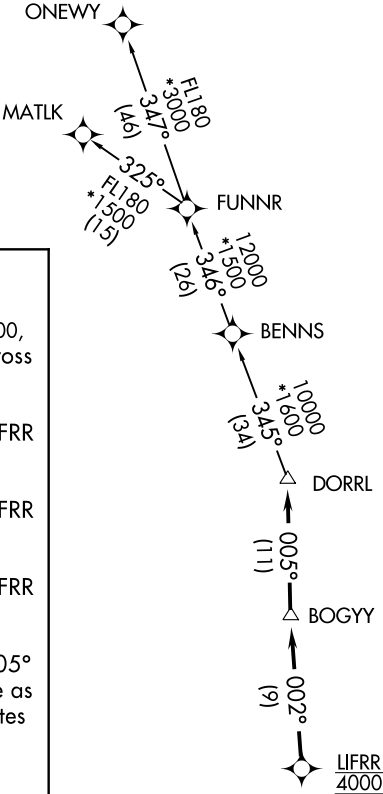
TAKEOFF RUNWAY 28: Climb on heading 276° or as assigned by ATC for RADAR vectors to cross LIFRR at 4000, thence. . . .

TAKEOFF RUNWAY 36: Climb on heading 005° or as assigned by ATC for RADAR vectors to cross LIFRR at 4000, thence. . . .

. . . .on track 002° to BOGY, then on track 005° to DORRL then on (transition), maintain altitude as assigned by ATC, expect filed altitude 10 minutes after departure.

MATLK TRANSITION (DORRL1.MATLK)

ONEWY TRANSITION (DORRL1.ONEWY)



NOTE: For turbo-props/props filed at or above 13000.

NOTE: Chart not to scale.