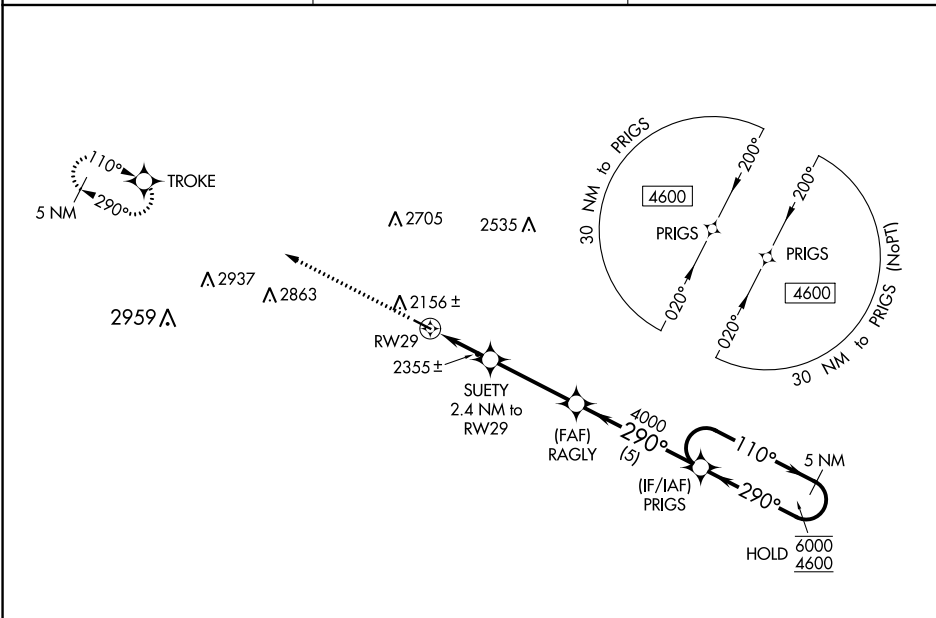


WAAS CH 45642 W29A	APP CRS 290°	Rwy ldg 3799 TDZE 2091 Apt Elev 2091
--	------------------------	---

RNAV (GPS) RWY 29

GLEN ULLIN RGNL (D57)

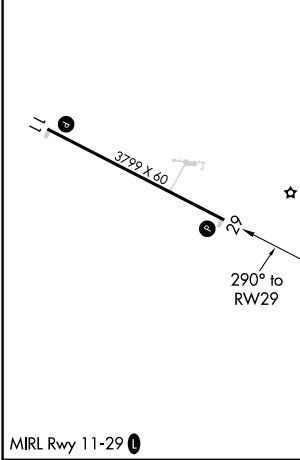
RNP APCH.		MISSED APPROACH: Climb to 4600 direct TROKE and hold.
AWOS-3P 118.75	MINNEAPOLIS CENTER 124.25 236.825	CTAF 122.9



NC-1, 23 FEB 2023 to 23 MAR 2023

NC-1, 23 FEB 2023 to 23 MAR 2023

ELEV 2091	TDZE 2091
-----------	-----------



4600 TROKE	VGSi and RNAV glidepath not coincident (VGSi Angle 3.00/TCH 26).		PRIGS	5 NM Holding Pattern
*LNAV only.	SUETY 2.4 NM to RW29	RAGLY 4000	PRIGS	5 NM Holding Pattern
	*1.6 NM to RW29	4000	290°	110° → 6000 ← 290° 4600
	2900*	4000		GP 3.00° TCH 40
	-1.6 NM	0.8 NM	3.5 NM	5 NM

CATEGORY	A	B	C	D
LPV DA	2341-1 250 (300-1)			NA
LNAV/VNAV DA	2561-1 ³ / ₈ 470 (500-1 ³ / ₈)			NA
LNAV MDA	2620-1	529 (600-1)	2620-1 ¹ / ₂ 529 (600-1 ¹ / ₂)	NA
<input checked="" type="checkbox"/> CIRCLING	2640-1 549 (600-1)	2680-1 589 (600-1)	2800-2 709 (800-2)	NA