

LOC/DME I-BTR 110.3 Chan 40	APP CRS 133°	Rwy Idg 6407 TDZE 67 Apt Elev 70
---	------------------------	---

ILS or LOC RWY 13

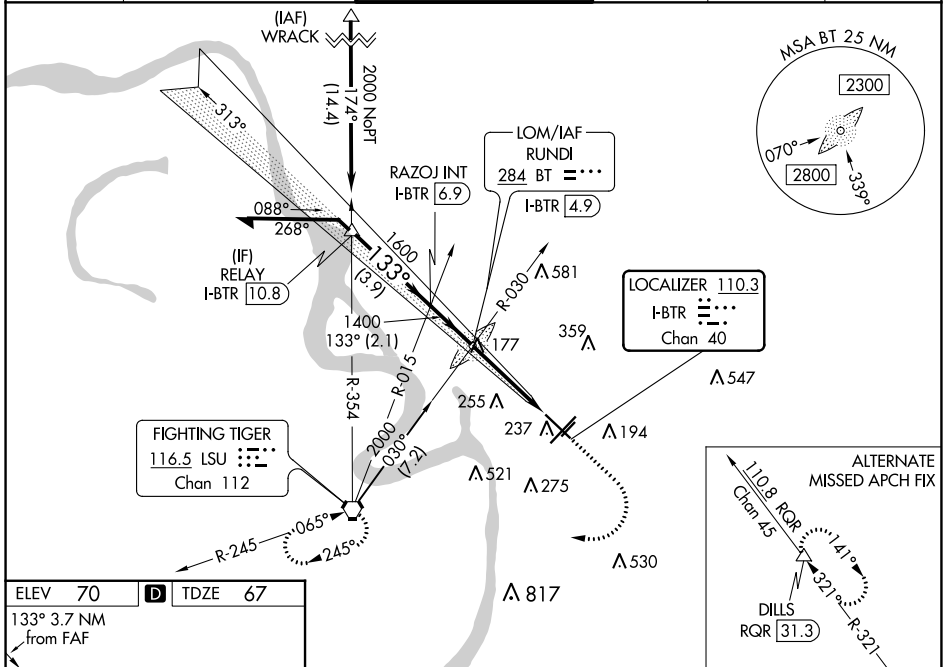
BATON ROUGE METRO, RYAN FLD (BTR)

ASR For inop MALSRR when using Hammond altimeter setting, increase S-ILS 13 all Cats visibility to 3/8 mile, and S-LOC 13 visibility to 1/8 mile. VDP NA with Hammond altimeter setting. When local altimeter setting not received, use Hammond altimeter setting and increase all DA 91 feet and all MDA 100 feet, increase S-LOC 13 Cats C and D visibility 1/4 mile, increase Circling Cats C and D visibility 1/4 mile. For inop MALSRR, increase S-LOC 13 Cats C and D to 1/8 mile.

MALSRR

MISSED APPROACH:
Climb to 700 then climbing right then to 2000 direct LSU VORTAC and hold.

ATIS 125.2	BATON ROUGE APP CON * 120.3 278.3	RYAN TOWER * 118.45 (CTAF) 257.8	GND CON 121.9	CLNC DEL 119.4	UNICOM 122.95
----------------------	---	--	-------------------------	--------------------------	-------------------------



ELEV 70	D	TDZE 67			
133° 3.7 NM from FAF					
TDZ/CL Rwy 22R HIRL Rwys 13-31 and 4L-22R MIRL Rwy 4R-22L FAF to MAP 3.7 NM					
Knots	60	90	120	150	180
Min:Sec	3:42	2:28	1:51	1:29	1:14

Remain within 10 NM	313°	1321	700	2000	LSU
2000	RAZOJ INT I-BTR 6.9	1600	133°	1400	*I-BTR 2.2
GS 3.00°	TCH 57	2.1 NM	2.7 NM	1 NM	I-BTR 1.1
CATEGORY	A	B	C	D	
S-ILS 13	267-1/2		200 (200-1/2)		
S-LOC 13	480-1/2	413 (500-1/2)	480-3/4	413 (500-3/4)	
CIRCLING	560-1 490 (500-1)	660-1 590 (600-1)	780-2 710 (800-2)	840-2 1/2 770 (800-2 1/2)	

SC-4, 23 MAR 2023 to 20 APR 2023

SC-4, 23 MAR 2023 to 20 APR 2023