

WAAS CH <b>86225</b> <b>W22A</b>	APP CRS <b>224°</b>	Rwy Idg <b>7500</b> TDZE <b>70</b> Apt Elev <b>70</b>
----------------------------------------	------------------------	-------------------------------------------------------------

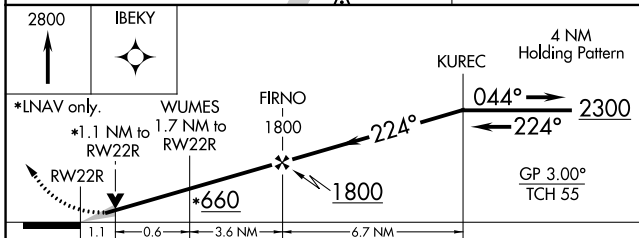
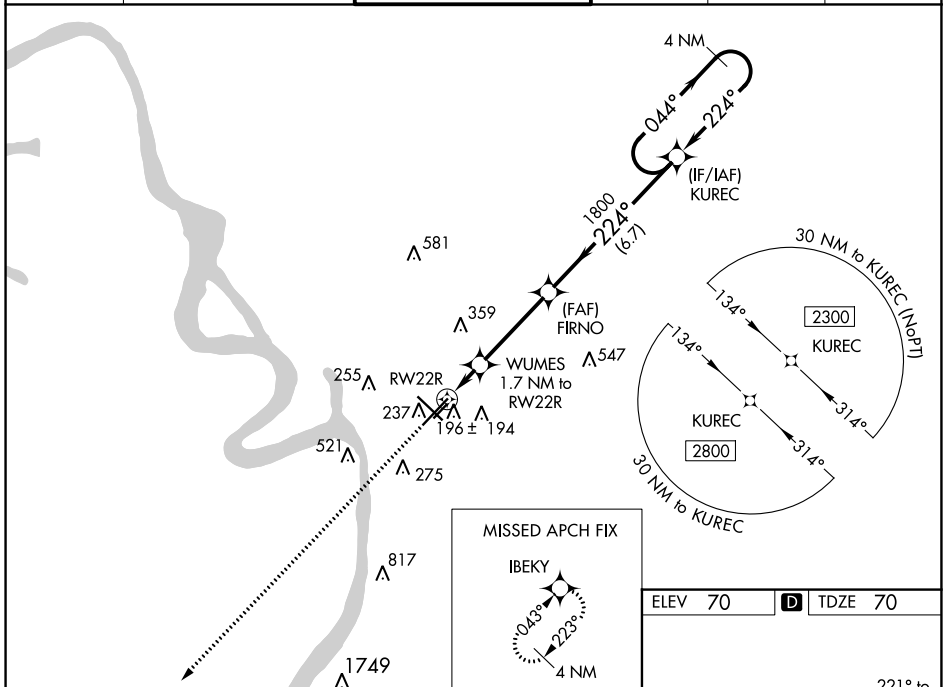
# RNAV (GPS) RWY 22R

BATON ROUGE METRO, RYAN FLD (BTR)

**ASR** Baro-VNAV NA when using Hammond altimeter setting. For uncompensated Baro-VNAV systems, LNAV/VNAV NA below -5°C (23°F) or above 54°C (130°F). DME/DME RNP-0.3 NA. VDP NA with Hammond altimeter setting. When local altimeter setting not received, use Hammond altimeter setting and increase all DA 91 feet, and all MDA 100 feet; increase LNAV/VNAV all Cats visibility 3/8 mile, LNAV Cat C/D visibility to RVR 5000, and Circling Cat C/D visibility 1/4 mile. For inop MALS R when using Hammond altimeter setting, increase LPV all Cats visibility to RVR 4500, and LNAV C/D visibility to 1 1/8 mile.

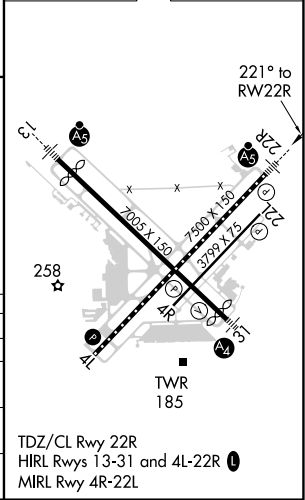
**MALS R**  
MISSED APPROACH:  
Climb to 2800 direct  
IBEKY and hold.

ATIS <b>125.2</b>	BATON ROUGE APP CON* <b>120.3 278.3</b>	RYAN TOWER* <b>118.45 (CTAF) 0 257.8</b>	GND CON <b>121.9</b>	CLNC DEL <b>119.4</b>	UNICOM <b>122.95</b>
----------------------	--------------------------------------------	---------------------------------------------	-------------------------	--------------------------	-------------------------



ELEV 70	<b>D</b> TDZE 70
---------	------------------

2800	IBEKY	KUREC 4 NM Holding Pattern			
*LNAV only.	WUMES *1.1 NM to RWY 22R	FIRNO 1800	224°	044°	2300
	1.1	0.6	3.6 NM	6.7 NM	
CATEGORY	A	B	C	D	
LPV DA		270/18	200 (200-1/2)		
LNAV/VNAV DA		486/45	416 (500-7/8)		
LNAV MDA	460/24	390 (400-1/2)	460/35	390 (400-3/8)	
<b>C</b> CIRCLING	560-1 490 (500-1)	660-1 590 (600-1)	780-2 710 (800-2)	840-2 1/2 770 (800-2 1/2)	



SC-4, 23 MAR 2023 to 20 APR 2023

SC-4, 23 MAR 2023 to 20 APR 2023