

WAAS CH 81825 W04A	APP CRS 043°	Rwy Idg 7500 TDZE 69 Apt Elev 70
--	------------------------	---

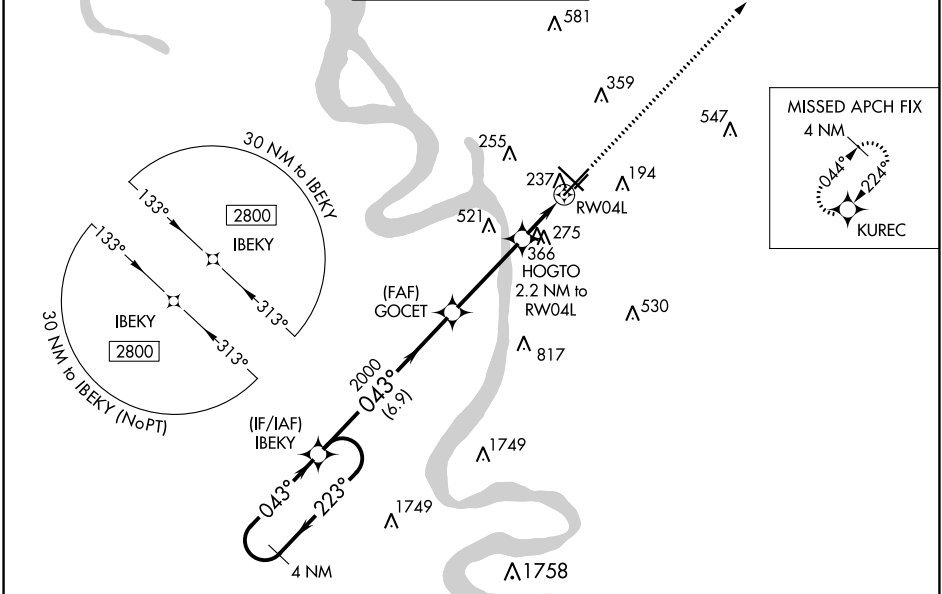
RNAV (GPS) RWY 4L

BATON ROUGE METRO, RYAN FLD (BTR)

⚠ For uncompensated Baro-VNAV systems, LNAV/VNAV NA below -5°C (23°F) or above 54°C (130°F).
⚠ DME/DME RNP-0.3 NA. Baro-VNAV and VDP NA when using Hammond altimeter setting. When local altimeter setting not received, use Hammond altimeter setting and increase all DA 91 feet and all ASR MDA 100 feet; increase LPV visibility ¼ mile all Cats, LNAV/VNAV visibility ½ mile all Cats and LNAV Cat C/D visibility ¼ mile, Circling Cat C/D visibility ¼ mile. Helicopter visibility reduction below ¾ SM NA.

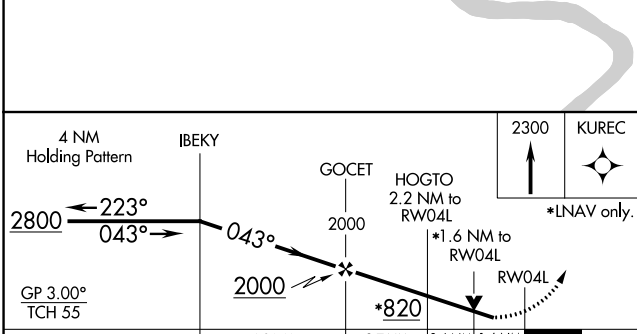
MISSED APPROACH:
Climb to 2300 direct KUREC and hold.

ATIS 125.2	BATON ROUGE APP CON* 120.3 278.3	RYAN TOWER* 118.45 (CTAF) 257.8	GND CON 121.9	CLNC DEL 119.4	UNICOM 122.95
----------------------	--	---	-------------------------	--------------------------	-------------------------



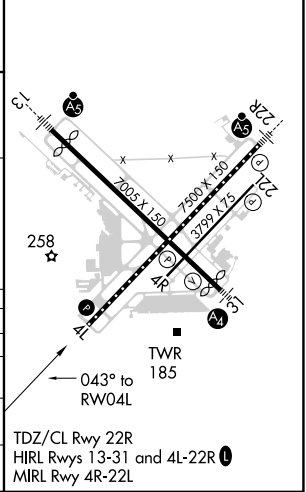
SC-4, 23 MAR 2023 to 20 APR 2023

SC-4, 23 MAR 2023 to 20 APR 2023



ELEV 70	D	TDZE 69
---------	---	---------

CATEGORY	A	B	C	D
LPV DA	345- ⁷ / ₈		276 (300- ⁷ / ₈)	
LNAV/VNAV DA	656-2		587 (600-2)	
LNAV MDA	620-1 551 (600-1)		620-1 ⁵ / ₈ 551 (600-1 ⁵ / ₈)	
C CIRCLING	620-1 550 (600-1)	660-1 590 (600-1)	780-2 710 (800-2)	840-2 ¹ / ₂ 770 (800-2 ¹ / ₂)



TDZ/CL Rwy 22R
HIRL Rwys 13-31 and 4L-22R
MIRL Rwy 4R-22L