

HI-ILS or LOC RWY 15

LOC/DME I-BTV 110.3 Chan 40	APCH CRS 146°	Rwy ldg TDZE Arprt Elev 7820 326 335
---	-------------------------	--

AL-70 [USAF]

BURLINGTON INTL (KBTV)

TACAN required.

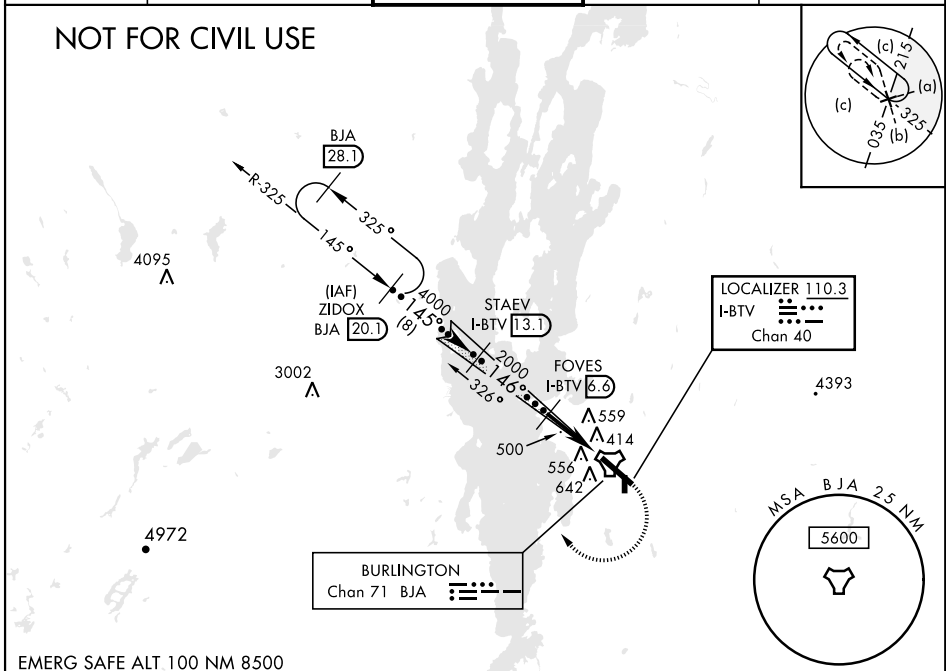


MISSED APPROACH: Climb to 1000, then climbing right turn to 8000 on BJA TACAN R-325 to ZIDOX/BJA 20.1 DME and hold, continue Climb-In-Hold to 8000.

▽ * When ALS inop, increase CAT CDE RVR to 55, vis to 1 mile.
▲

ATIS 123.8 269.9	APP CON 121.1 278.8	TOWER ★ 118.3 (CTAF) 0257.8	GND CON 126.3 348.6	CLNC DEL 119.15
----------------------------	-------------------------------	--	-------------------------------	---------------------------

NOT FOR CIVIL USE



EMERG SAFE ALT 100 NM 8500

NE-1, 23 MAR 2023 to 20 APR 2023

NE-1, 23 MAR 2023 to 20 APR 2023

Use I-BTV DME when on localizer course.			1000	8000	ZIDOX BJA	ELEV 335	TDZE 326
ZIDOX BJA 20.1, STAEV I-BTV 13.1, FOVES I-BTV 6.6, TACAN, I-BTV 2.5, I-BTV 1.5, LOC DME			↑	↻ BJA R-325	20.1	D	Rwy 1 ldg 3886' Rwy 19 ldg 3386' Rwy 15 ldg 7820' Rwy 33 ldg 7819'
GS 3.00° TCH 51			8000	4000	2000	349±	380±
4.1 NM, 1.1 NM			146° 5.2 NM from FAF	TWR 441	343±	343±	343±
CATEGORY	C	D	E				
S-ILS 15		576/40	250 (300-¾)				
S-LOC 15*		700/40	374 (400-¾)				
CIRCLING	1220-2¾ 885 (900-2¾)	1380-3 1045 (1100-3)	1500-3 1165 (1200-3)	MIRL Rwy 1-19 HIRL Rwy 15-33			

HI-ILS or LOC RWY 15