

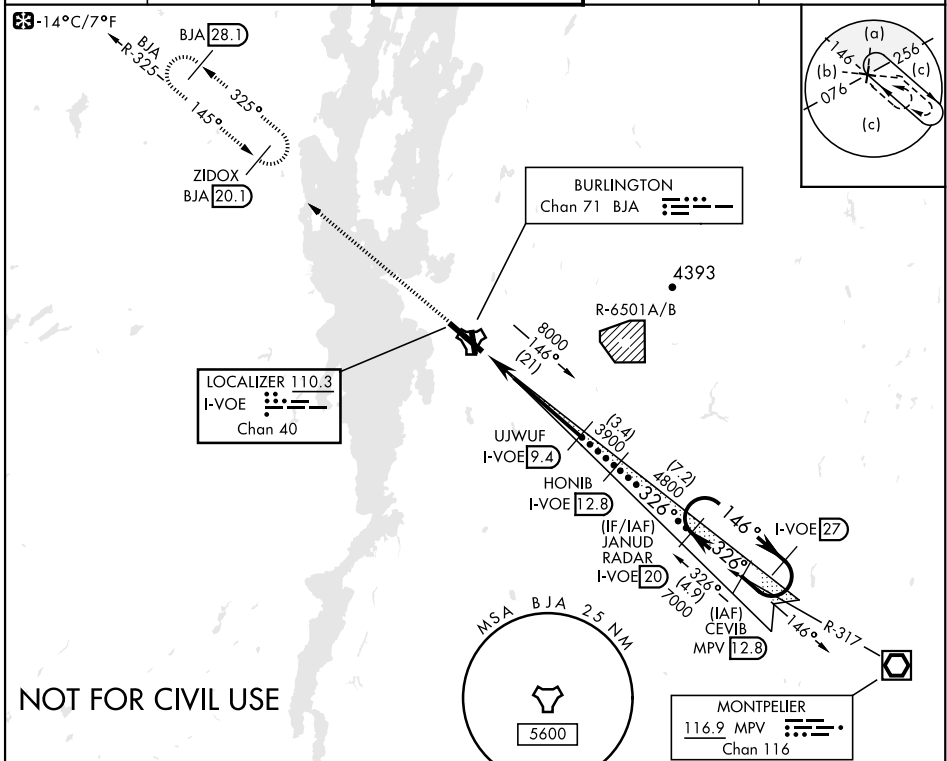
BURLINGTON, VERMONT

HI-LOC RWY 33

LOC/DME I-VOE 110.3 Chan 40	APCH CRS 326°	Rwy ldg TDZE Arprt Elev 7819 334 335	AL-70 [USAF]	BURLINGTON INTL (KBTV)
-------------------------------------------------	-------------------------	--------------------------------------------------------------------------	--------------	------------------------

DME required.	MALSF A4	MISSED APPROACH: Climb to 7000 on BJA TACAN R-325 to ZIDOX/BJA 20.1 DME and hold, continue climb-in-hold to 7000.
---------------	-------------	-------------------------------------------------------------------------------------------------------------------

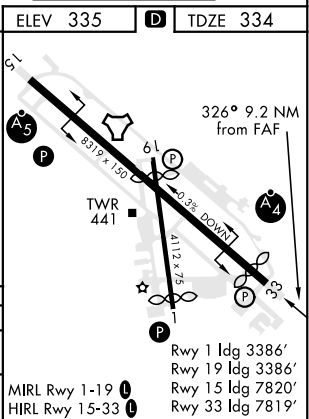
ATIS 123.8 269.9	APP CON 121.1 278.8	TOWER ★ 118.3 (CTAF) 0257.8	GND CON 126.3 348.6	CLNC DEL 119.15
----------------------------	-------------------------------	---------------------------------------	-------------------------------	---------------------------



NOT FOR CIVIL USE

EMERG SAFE ALT 100 NM 8500

7000 BJA R-325	ZIDOX BJA 20.1	VGS1 and descent angles not coincident (VGS1 angle 3.20/TCH 53)		JANUD RADAR I-VOE 20	I-VOE 27
UJWUF I-VOE 9.4	HONIB I-VOE 12.8	UJWUF I-VOE 9.4	HONIB I-VOE 12.8	UJWUF I-VOE 9.4	HONIB I-VOE 12.8
OKHEX I-VOE 4.5	XOWVVE I-VOE 4.5	WATIP I-VOE 3.2	XOWVVE I-VOE 4.5	UJWUF I-VOE 9.4	HONIB I-VOE 12.8
TACAN I-VOE 0.2	LOC DME I-VOE 0.8	LOC DME I-VOE 0.2	LOC DME I-VOE 0.8	LOC DME I-VOE 0.2	LOC DME I-VOE 0.8
2.3 NM	1 NM	1.3 NM	4.9 NM	2100	3900
1240	1620	2100	3900	4800	7000
CATEGORY C		CATEGORY D		CATEGORY E	
S-LOC 33 *		760/50		426 (500-1)	
CIRCLING		1200-2½ 865 (900-2½)		1380-3 1045 (1100-3)	
		1420-3 1085 (1100-3)		MIRL Rwy 1-19 HIRL Rwy 15-33	



NE-1, 23 MAR 2023 to 20 APR 2023

NE-1, 23 MAR 2023 to 20 APR 2023

BURLINGTON, VERMONT

44°28'N-73°09'W

BURLINGTON INTL (KBTV)

Orig 20JUL17

HI-LOC RWY 33