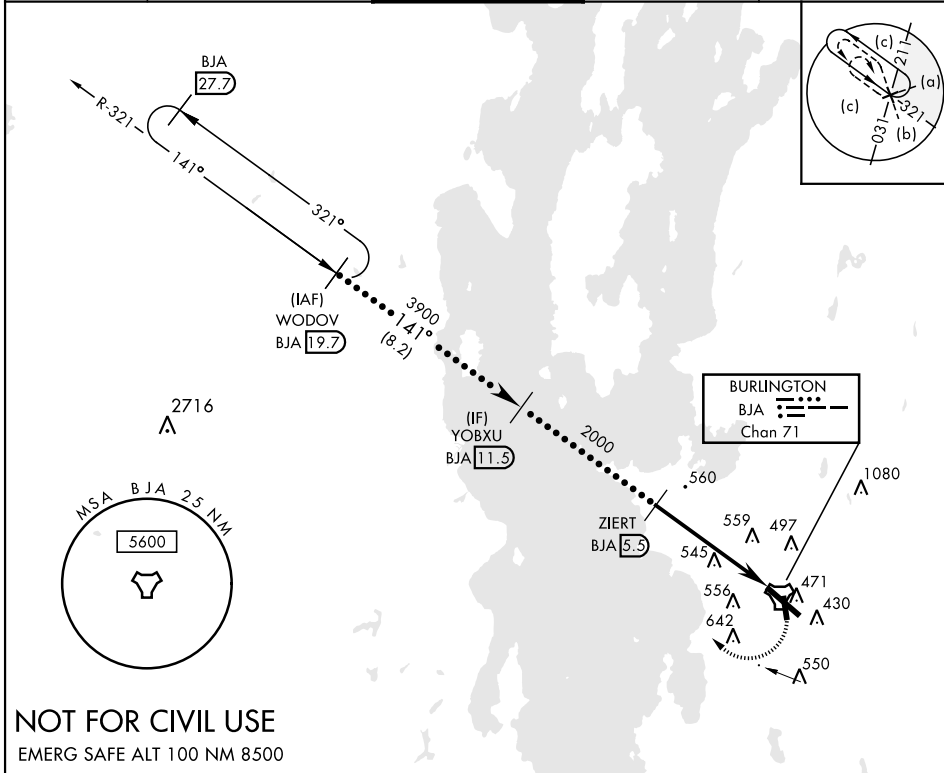


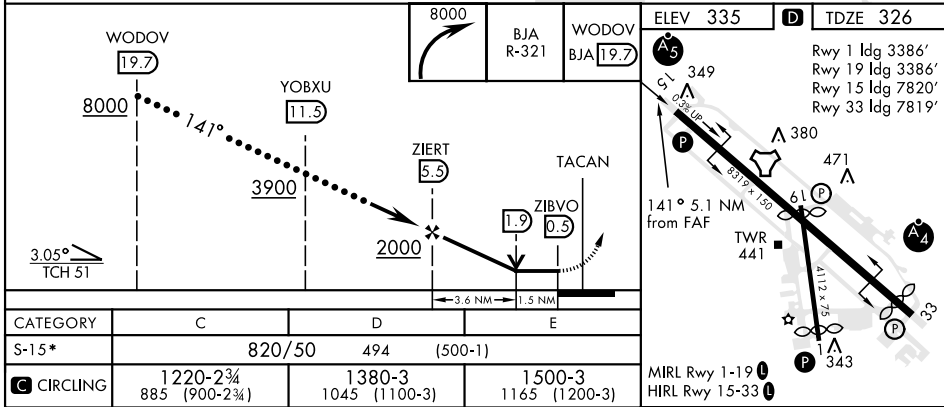
HI-TACAN RWY 15

TACAN BJA Chan 71	APCH CRS 141°	Rwy ldg TDZE Arpt Elev 7820 326 335	AL-70 [USAF]	BURLINGTON INTL (KBTV)
<p>▼ * When ALS inop, increase CAT CDE vis to 1$\frac{3}{8}$ mile.</p> <p>▲</p>		MALSRL A5	MISSED APPROACH: Climbing right turn to 8000 on BJA R-321 to WODOV / BJA 19.7 DME and hold, continue climb-in-hold to 8000.	

ATIS 123.8 269.9	APP CON 121.1 278.8	TOWER ★ 118.3 (CTAF) 0257.8	GND CON 126.3 348.6	CLNC DEL 119.15
----------------------------	-------------------------------	---------------------------------------	-------------------------------	---------------------------



NOT FOR CIVIL USE
EMERG SAFE ALT 100 NM 8500



BURLINGTON, VERMONT	44°28'N-73°09'W	BURLINGTON INTL (KBTV)
---------------------	-----------------	------------------------

Orig-A 04NOV21

HI-TACAN RWY 15

NE-1, 23 MAR 2023 to 20 APR 2023

NE-1, 23 MAR 2023 to 20 APR 2023