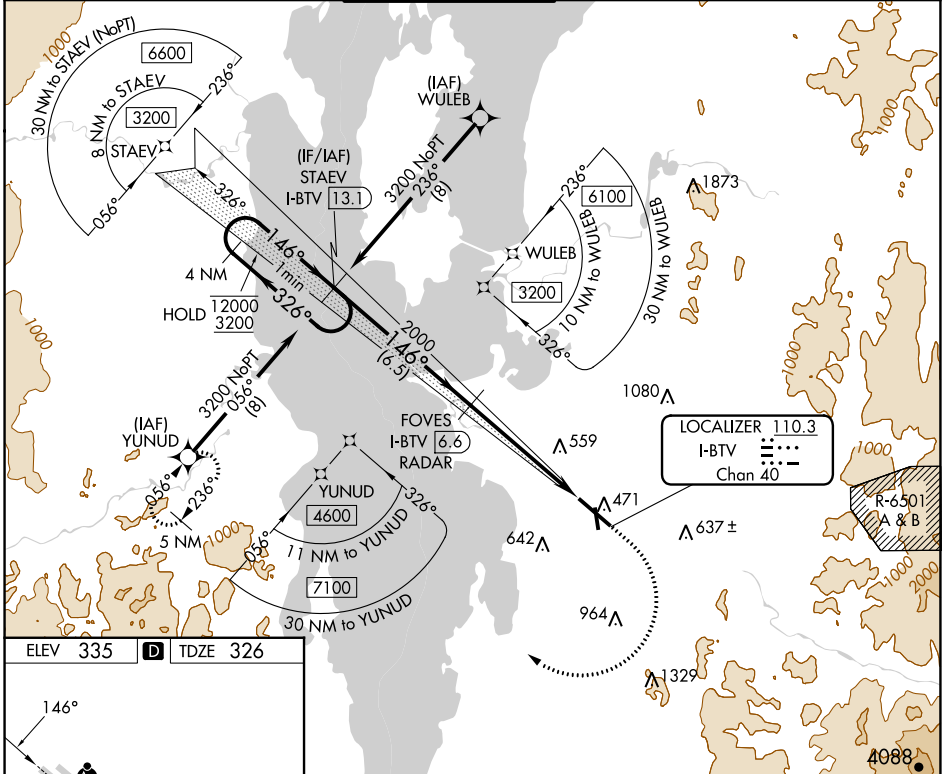


LOC/DME I-BTV 110.3 Chan 40	APP CRS 146°	Rwy ldg TDZE 7820 326 Apt Elev 335
---	------------------------	---

ILS or LOC RWY 15

BURLINGTON INTL (BTV)

RNP APCH - GPS, DME or RADAR required for LOC only.			MALSRR	MISSED APPROACH: Climb to 1000 then climbing right turn to 5600 direct YUNUD and hold, continue climb-in-hold to 5600.	
⚠ Rwy 15 helicopter visibility reduction below $\frac{3}{4}$ SM NA. ⚠ For inop ALS, increase S-LOC 15 all Cats visibility to RVR 5500. ❄ -10°C Inop table does not apply to S-ILS 15.					
ATIS 123.8 269.9	BURLINGTON APP CON * 121.1 278.8	BURLINGTON TOWER * 118.3 (CTAF) 257.8	GND CON 126.3 348.6	CLNC DEL 119.15	UNICOM 122.95



NE-1, 23 MAR 2023 to 20 APR 2023

NE-1, 23 MAR 2023 to 20 APR 2023

ELEV 335	D	TDZE 326
----------	----------	----------

MIRL Rwy 1-19
HIRL Rwy 15-33

FAF to MAP 5.2 NM

Knots	60	90	120	150	180
Min:Sec	5:12	3:28	2:36	2:05	1:44

	STAIEV I-BTV 13.1	FOVES I-BTV 6.6 RADAR	1000	5600	YUNUD
	12000 ← 326°	2000	↑	↷	✦
	3200 146° →	4 NM / One Minute Holding Pattern			
	GS 3.00° TCH 51	2000			
		6.5 NM	4.1 NM	1.1 NM	
CATEGORY	A	B	C	D	E
S-ILS 15		576/40	250 (300- $\frac{3}{4}$)		
S-LOC 15		700/40	374 (400- $\frac{3}{4}$)		
C CIRCLING	840-1 505 (600-1)	860-1 525 (600-1)	1220-2 $\frac{3}{4}$ 885 (900-2 $\frac{3}{4}$)	1400-3 1065 (1100-3)	1460-3 1125 (1200-3)