

VOR/DME BTV 117.5 Chan 122	APP CRS 036°	Rwy Idg TDZE 334 Apt Elev 335	3386
--	------------------------	---	-------------

VOR RWY 1

BURLINGTON INTL (BTV)

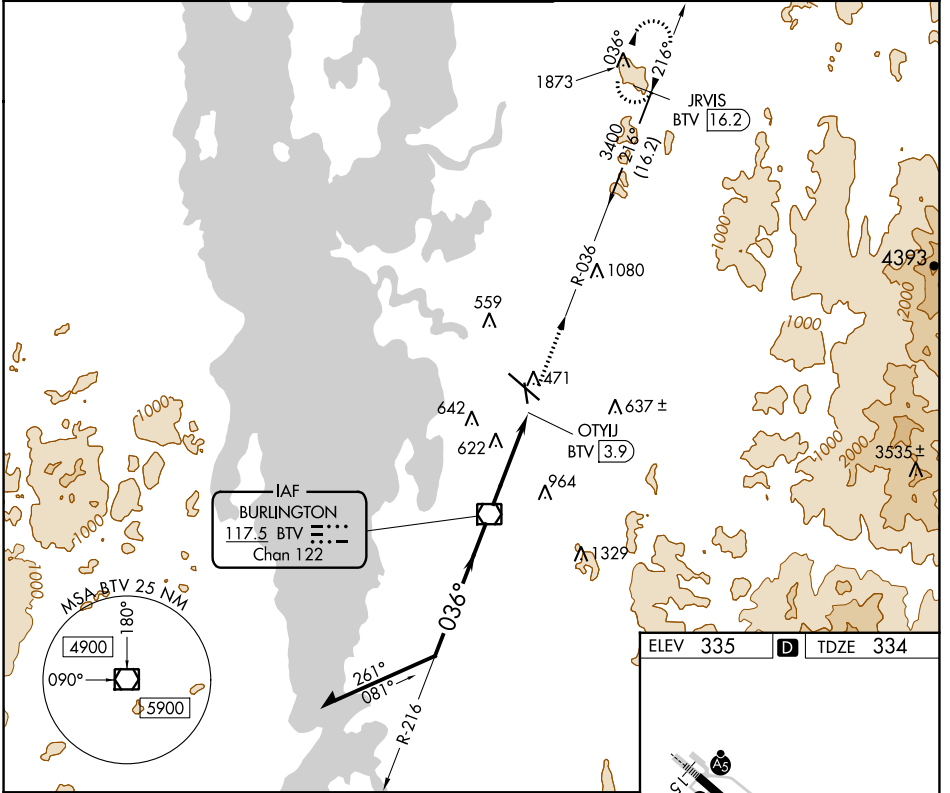
DME required.

▼
▲
☁ -10°C

Rwy 1 helicopter visibility reduction below 1 SM NA.
Straight-in and Circling Rwy 1 NA at night.

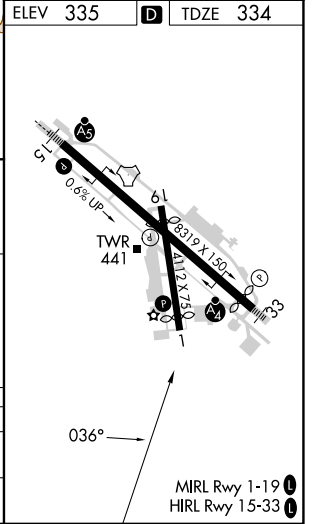
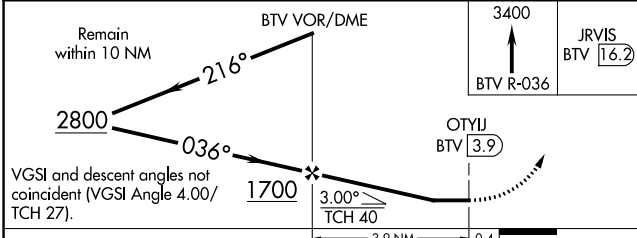
MISSED APPROACH: Climb to 3400 on BTV
VOR/DME R-036 to JRVIS 16.2 DME and hold.

ATIS 123.8 269.9	BURLINGTON APP CON * 121.1 278.8	BURLINGTON TOWER * 118.3 (CTAF) 257.8	GND CON 126.3 348.6	CLNC DEL 119.15	UNICOM 122.95
----------------------------	--	---	-------------------------------	---------------------------	-------------------------



NE-1, 23 MAR 2023 to 20 APR 2023

NE-1, 23 MAR 2023 to 20 APR 2023



CATEGORY	A	B	C	D
S-1	880-1 546 (600-1)		880-1½ 546 (600-1½)	NA
C CIRCLING	880-1 545 (600-1)		1200-2½ 865 (900-2½)	1380-3 1045 (1100-3)