

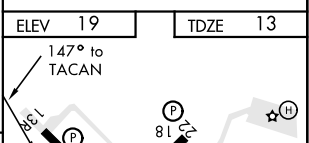
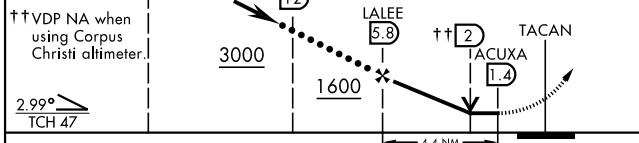
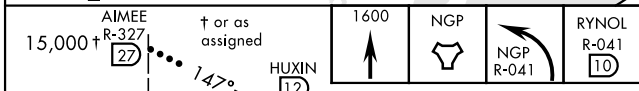
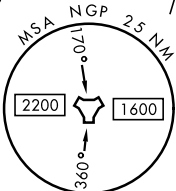
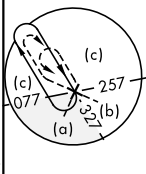
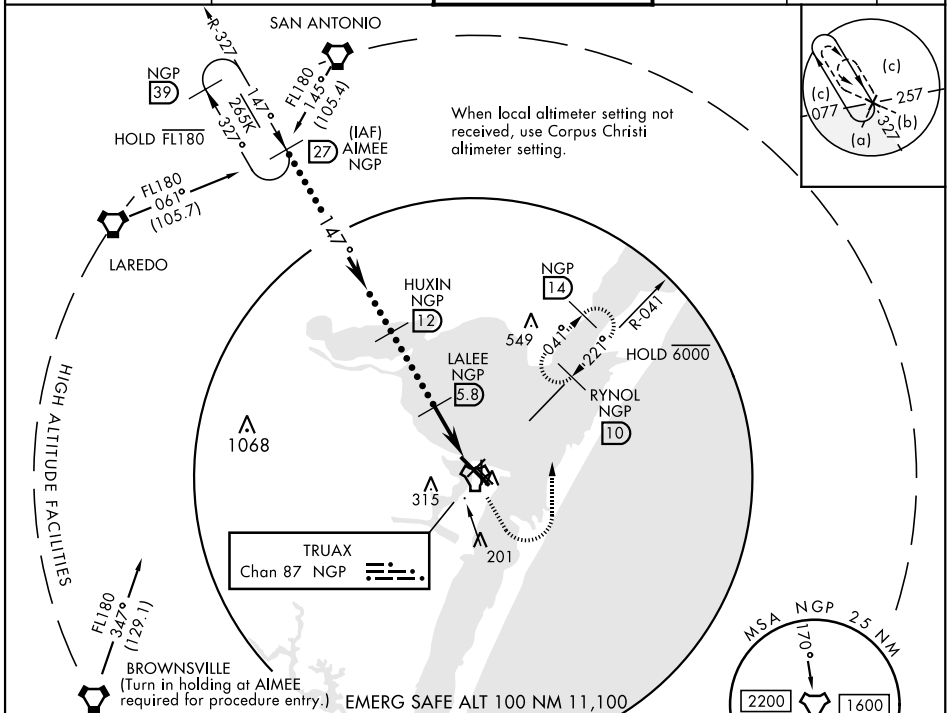
TACAN Chan 87	NGP 147°	APCH CRS 147°	Rwy ldg TDZE Arpt Elev	8002 13 19
-------------------------	--------------------	-------------------------	------------------------------	---------------------------------------

AL-98 [USN] CORPUS CHRISTI NAS (TRUAX FLD) (KNGP)

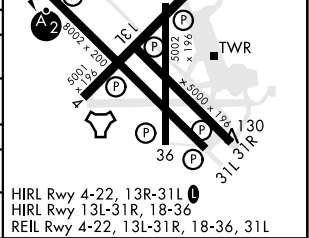
MISSED APPROACH: Climb to 1600 direct NGP TACAN and turn left to intercept R-041 and hold.

SALSF

ATIS ★ 127.9 290.9	CORPUS CHRISTI APP CON 120.9 348.725	NAVY CORPUS TOWER ★ 134.85 0 340.2	GND CON 118.7 257.85	CLNC DEL 314.3	ASR/ PAR
------------------------------	--	--	--------------------------------	--------------------------	-------------



CATEGORY	C	D	E
S-13R*	400-7/8	387 (400-7/8)	
CIRCLING	540-1 1/2 521 (600-1 1/2)	620-2 601 (700-2)	620-2 1/4 601 (700-2 1/4)
CORPUS CHRISTI ALTIMETER SETTING			
S-13R *	420-1	407 (500-1)	
CIRCLING	580-1 1/2 561 (600-1 1/2)	660-2 641 (700-2)	660-2 1/4 641 (700-2 1/4)



CORPUS CHRISTI, TEXAS 27°42'N-97°17'W CORPUS CHRISTI NAS (TRUAX FLD) (KNGP)

Amtd 1 16JUL20

SC-3, 23 MAR 2023 to 20 APR 2023

SC-3, 23 MAR 2023 to 20 APR 2023