

CORPUS CHRISTI, TEXAS

# ILS Y or RNAV (GPS) RWY 13R

AL-98 [USN]

CORPUS CHRISTI NAS (TRUAX FLD) (KNGP)

LOC I-NGP <b>111.3</b>	APCH CRS <b>132°</b>	Rwy ldg TDZE Arpt Elev <b>8002</b> <b>13</b> <b>19</b>
---------------------------	-------------------------	---

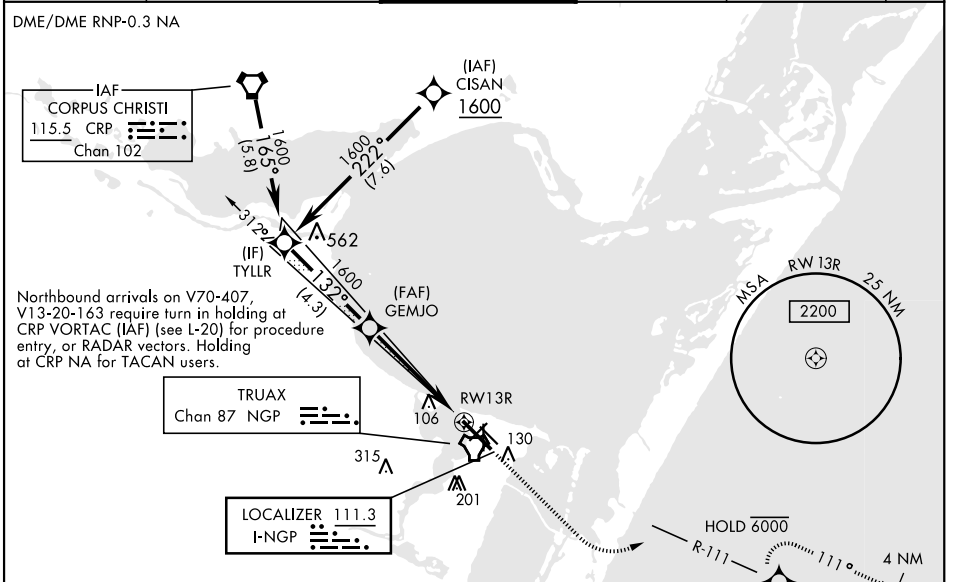
RNP APCH - DME/DME RNP 0.3 NA for LNAV.  
RNAV1 - GPS for ILS.

▼\*When ALS inop, increase CAT AB vis to 1 mile; CAT CD vis to 1 1/2 miles. When local altimeter setting not received, use Corpus Christi altimeter setting.

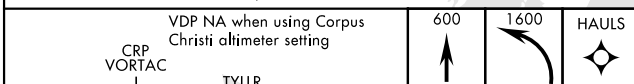
SALSF

MISSED APPROACH: Climb to 600, then climbing left turn to 1600 direct HAULS and hold.

ATIS★ <b>127.9 290.9</b>	CORPUS CHRISTI APP CON <b>128.675 343.75</b>	NAVY CORPUS TOWER★ <b>134.85 340.2</b>	GND CON <b>118.7 257.85</b>	CLNC DEL <b>314.3</b>	ASR/ PAR
-----------------------------	---	---	--------------------------------	--------------------------	-------------



EMERG SAFE ALT 100 NM 11,100



CRP VORTAC	TYLLR	GEMJO	1.1 NM to RWY13R	RWY13R
GS 3.00° TCH 47	165°	132°	4.8 NM	

CATEGORY	A	B	C	D
S-ILS 13R	213-3/4		200	(200-3/4)
LNAV MDA*	400-3/4 387 (400-3/4)		400-7/8 387 (400-7/8)	
<b>C</b> CIRCLING	480-1 461 (500-1)		540-1 1/2 521 (600-1 1/2)	620-2 601 (700-2)
CORPUS CHRISTI ALTIMETER SETTING				
S-ILS 13R	242-3/4		232	(300-3/4)
LNAV MDA*	420-3/4 407 (500-3/4)		420-1 407 (500-1)	
<b>C</b> CIRCLING	500-1 481 (500-1)	520-1 501 (600-1)	580-1 1/2 561 (600-1/2)	660-2 641 (700-2)

ELEV 19	TDZE 13
---------	---------

HOLD 6000 R-111 111° 4 NM

HAULS NGP 12

HIRL Rwy 4-22, 13R-31L

HIRL Rwy 13L-31R, 18-36

REIL Rwy 4-22, 13L-31R, 18-36, 31L

CORPUS CHRISTI, TEXAS  
Amdt 1 16JUL20

27°42'N-97°17'W

CORPUS CHRISTI NAS (TRUAX FLD) (KNGP)

# ILS Y or RNAV (GPS) RWY 13R

SC-3, 23 MAR 2023 to 20 APR 2023

SC-3, 23 MAR 2023 to 20 APR 2023