

CORPUS CHRISTI, TEXAS

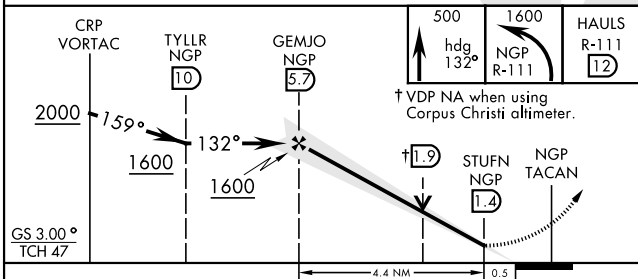
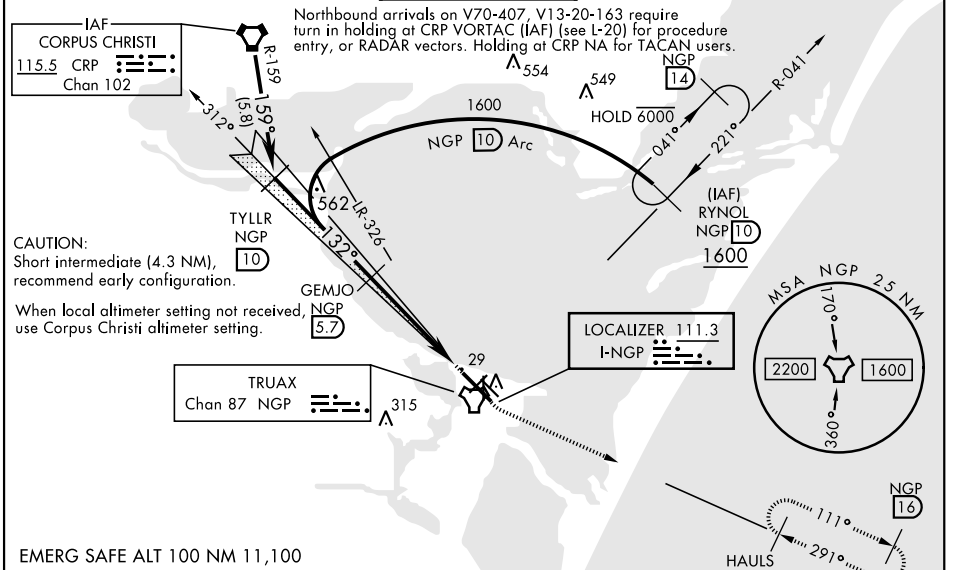
# ILS Z or LOC/DME RWY 13R

LOC I-NGP <b>111.3</b>	APCH CRS <b>132°</b>	Rwy Ldg TDZE Arpt Elev <b>8002</b> <b>13</b> <b>19</b>
---------------------------	-------------------------	---

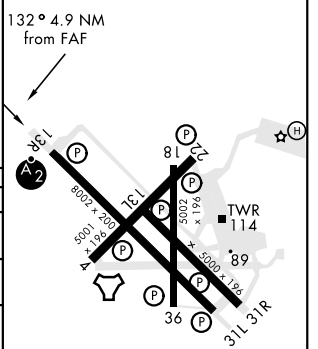
AL-98 [USN] CORPUS CHRISTI NAS (TRUAX FLD) (KNGP)

DME Required. ▼ * When ALS inop, increase vis to 1 mile. ** When ALS inop, increase CAT AB vis to 1 mile, CAT CD to 1 1/8 miles.	SALSF 	MISSED APPROACH: Climb to 500 hdg 132°, then climbing left turn to 1600 and intercept NGP TACAN R-111 to HAULS and hold.
--	-----------	--

ATIS★ <b>127.9 290.9</b>	APP CON <b>128.675 343.75</b>	NAVY CORPUS TOWER★ <b>134.85 340.2</b>	GND CON <b>118.7 257.85</b>	CLNC DEL <b>314.3</b>	ASR/PAR
-----------------------------	----------------------------------	---	--------------------------------	--------------------------	---------



ELEV 19	TDZE 13
---------	---------



CATEGORY	A	B	C	D
S-ILS 13R	213-3/4	200	(200-3/4)	
S-LOC/DME 13R*	380-3/4	367	(400-3/4)	
<b>C</b> CIRCLING	480-1 461 (500-1)	540-1 1/2 521 (600-1 1/2)	620-2 601 (700-2)	
CORPUS CHRISTI ALTIMETER SETTING				
S-ILS 13R	245-3/4	232	(300-3/4)	
S-LOC/DME 13R**	420-3/4 407 (500-3/4)	420-1 407 (500-1)		
<b>C</b> CIRCLING	500-1 481 (500-1)	520-1 501 (600-1)	580-1 1/2 561 (600-1 1/2)	660-2 641 (700-2)

HIRL Rwy 4-22, 13R-31L	
HIRL Rwy 13L-31R, 18-36	
REIL Rwy 4-22, 13L-31R, 18-36, 31L	
FAF to MAP 4.4 NM	
Knots	60 90 120 150 180
Min:Sec	4:24 2:56 2:12 1:46 1:28

CORPUS CHRISTI, TEXAS 27° 42' N-97° 17' W CORPUS CHRISTI NAS (TRUAX FLD) (KNGP)

# ILS Z or LOC/DME RWY 13R

SC-3, 23 MAR 2023 to 20 APR 2023

SC-3, 23 MAR 2023 to 20 APR 2023

Amtd 1 16JUL20