

CORPUS CHRISTI, TEXAS

RNAV (GPS) RWY 13L

CORPUS CHRISTI NAS (TRUAX FLD) (KNGP)

AL-98 [USN]

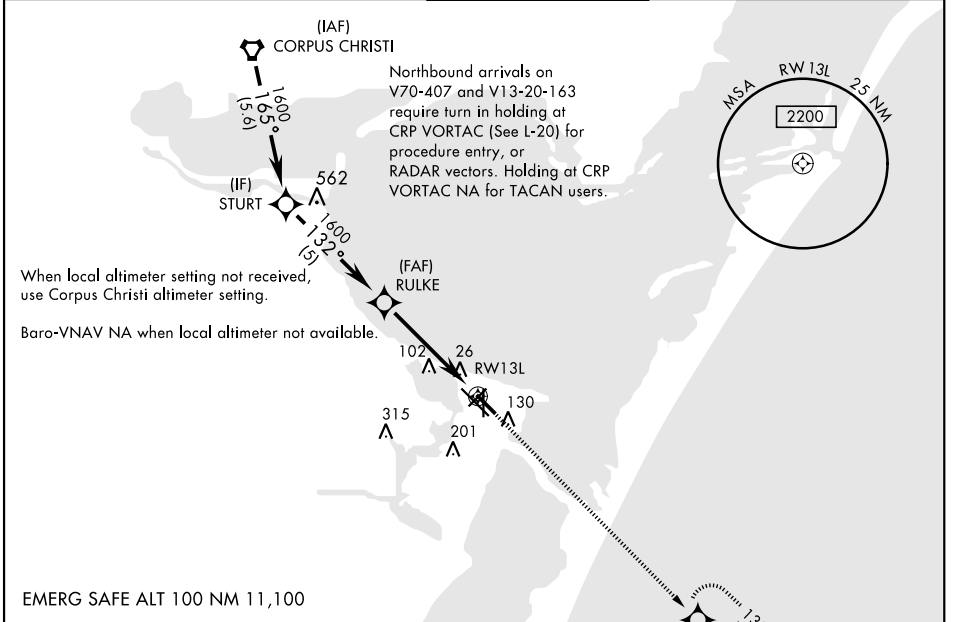
APCH CRS	Rwy Idg	5000
132°	TDZE	19
	Arpt Elev	19

RNP APCH - DME/DME RNP-0.3 NA.

For uncompensated Baro-VNAV systems, LNAV/VNAV NA below -15°C (5°F) or above 54°C (129°F).

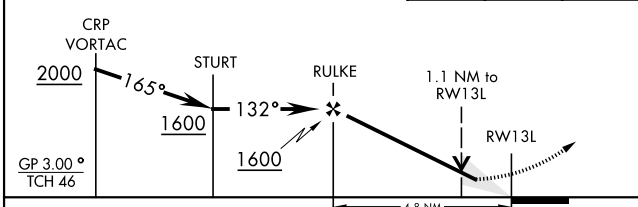
MISSED APPROACH: Climb to 600, then climbing right turn to 1600 direct POLCK and hold.

ATIS ★	CORPUS CHRISTI APP CON	NAVY CORPUS TOWER ★	GND CON	CLNC DEL	ASR/PAR
127.9 290.9	128.675 343.75	134.85 340.2	118.7 257.85	314.3	

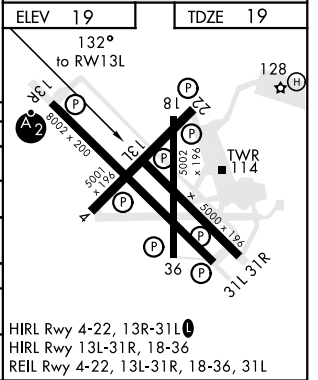


VDP NA when using Corpus Christi altimeter setting.

600	1600	POLCK
↑	↪	◆



CATEGORY	A	B	C	D
LNAV/VNAV DA	269-¾		250 (300-¾)	
LNAV MDA	400-1	381 (400-1)	400-1½	381 (400-1½)
CIRCLING	480-1	461 (500-1)	540-1½ 521 (600-1½)	620-2 601 (700-2)
CORPUS CHRISTI ALTIMETER SETTING				
LNAV MDA	420-1	401 (500-1)	420-1½	401 (500-1½)
CIRCLING	500-1 481 (500-1)	520-1 501 (600-1)	580-1½ 561 (600-1½)	660-2 641 (700-2)



CORPUS CHRISTI, TEXAS
Amdt 1 16JUL20

27°42'N-97°17'W

CORPUS CHRISTI NAS (TRUAX FLD) (KNGP)

RNAV (GPS) RWY 13L

SC-3, 23 MAR 2023 to 20 APR 2023

SC-3, 23 MAR 2023 to 20 APR 2023