

CORPUS CHRISTI, TEXAS

RNAV (GPS) RWY 22

APCH CRS	Rwy Idg	5001
222°	TDZE	15
	Arprt Elev	19

AL-98 [USN]

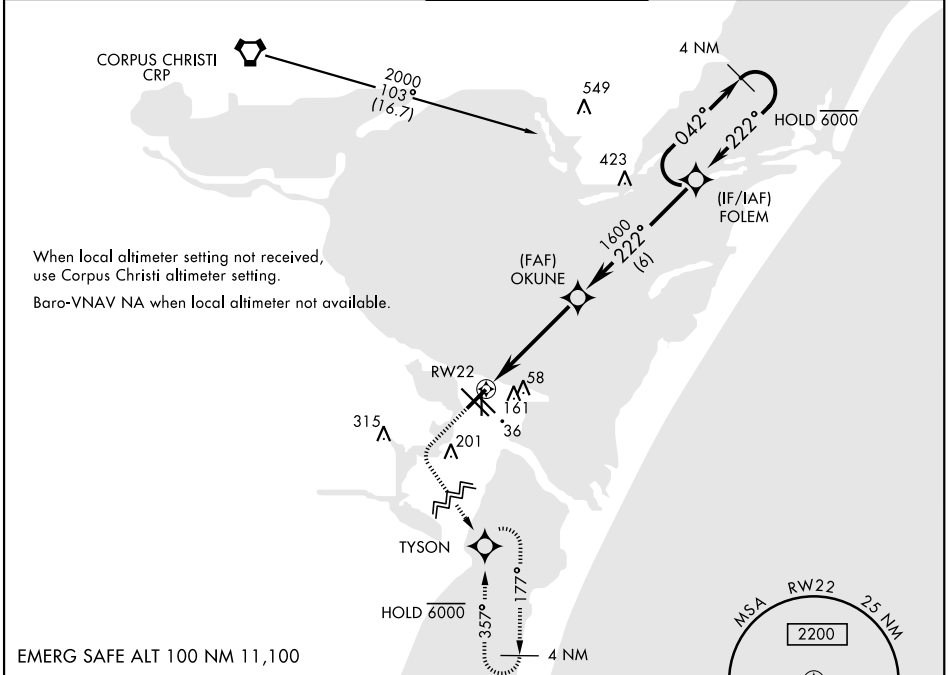
CORPUS CHRISTI NAS (TRUAX FLD) (KNGP)

RNP APCH - DME/DME RNP-0.3 NA.

MISSED APPROACH: Climb to 600, then climbing left turn to 2000 direct TYSON and hold.

▼ For uncompensated Baro-VNAV systems, LNAV/VNAV NA below -15° C (5° F) or above 54° C (129° F).

ATIS ★ 127.9 290.9	CORPUS CHRISTI APP CON 128.675 343.75	NAVY CORPUS TOWER ★ 134.85 340.2	GND CON 118.7 257.85	CLNC DEL 314.3	ASR/ PAR
------------------------------	---	--	--------------------------------	--------------------------	-------------

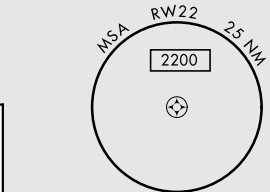
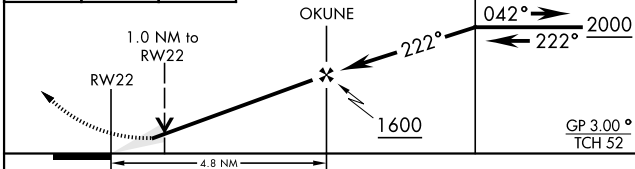


SC-3, 23 MAR 2023 to 20 APR 2023

SC-3, 23 MAR 2023 to 20 APR 2023

EMERG SAFE ALT 100 NM 11,100

600	2000	TYSON	VDP NA when using Corpus Christi altimeter setting.
-----	------	-------	---



CATEGORY	A	B	C	D
LNAV MDA	380-1		365	(400-1)
LNAV/VNAV DA	290-7/8 275 (300-7/8)	301-7/8 286 (300-7/8)	309-7/8 294 (300-7/8)	320-7/8 305 (400-7/8)
CIRCLING	480-1	461 (500-1)	540-1½ 521 (600-1½)	620-2 601 (700-2)
CORPUS CHRISTI ALTIMETER SETTING				
LNAV MDA	400-1	385 (400-1)	400-1½	385 (400-1½)
CIRCLING	500-1 481 (500-1)	520-1 501 (600-1)	580-1½ 561 (600-1½)	660-2 641 (700-2)

ELEV 19	TDZE 15
---------	---------

TWR
36L
36R
31L-31R
31L-31R

CORPUS CHRISTI, TEXAS
Amdt 1 16JUL20

27°42'N-97°17'W

CORPUS CHRISTI NAS (TRUAX FLD) (KNGP)

RNAV (GPS) RWY 22

HIRL Rwy 4-22, 13R-31L
HIRL Rwy 13L-31R, 18-36
REIL Rwy 4-22, 13L-31R, 18-36, 31L