

CORPUS CHRISTI, TEXAS

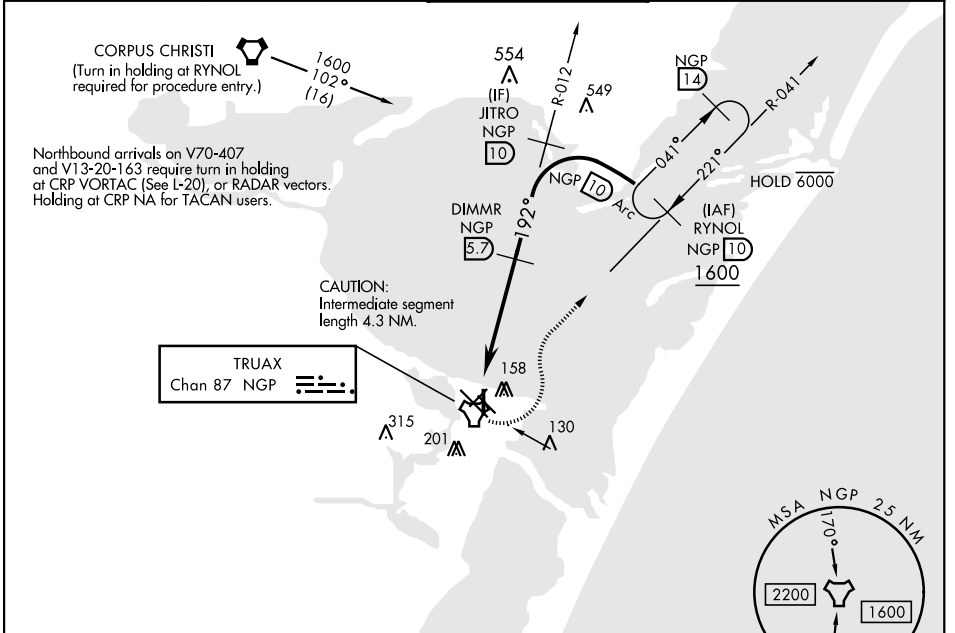
TACAN RWY 18

TACAN NGP Chan 87	APCH CRS 192°	Rwy Idg TDZE Arprt Elev	5002 19 19
-----------------------------	-------------------------	-------------------------------	---------------------------------------

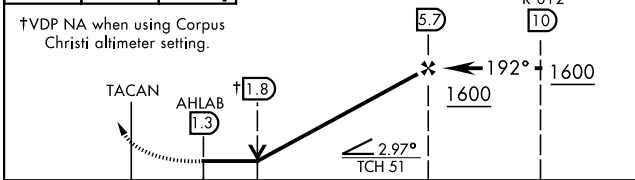
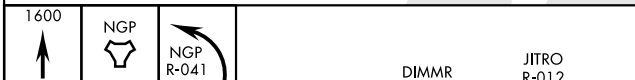
AL-98 [USN] CORPUS CHRISTI NAS (TRUAX FLD) (KNGP)

When local altimeter setting not received, use Corpus Christi altimeter setting. MISSED APPROACH: Climb to 1600 direct NGP TACAN and turn left to intercept R-041 to RYNOL and hold.

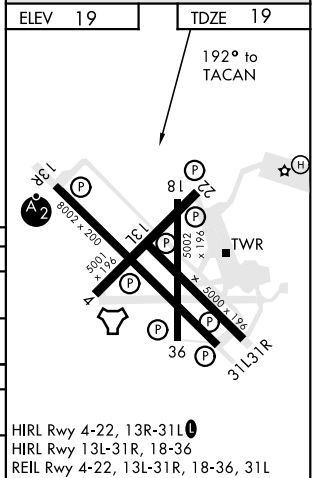
ATIS ★ 127.9 290.9	CORPUS CHRISTI APP CON 128.675 343.75	NAVY CORPUS TOWER ★ 134.85 340.2	GND CON 118.7 257.85	CLNC DEL 314.3	ASR/ PAR
------------------------------	---	--	--------------------------------	--------------------------	-------------



EMERG SAFE ALT 100 NM 11,100



CATEGORY	A	B	C	D
S-18		360-1	341	(400-1)
CIRCLING	480-1	461 (500-1)	540-1½ 521 (600-1½)	620-2 601 (700-2)
CORPUS CHRISTI ALTIMETER SETTING				
S-18	400-1	381 (400-1)	400-1⅙	381 (400-1⅙)
CIRCLING	500-1 481 (500-1)	520-1 501 (600-1)	580-1½ 561 (600-1½)	660-2 641 (700-2)



CORPUS CHRISTI, TEXAS 27°42'N-97°17'W CORPUS CHRISTI NAS (TRUAX FLD) (KNGP)

Amdt 1 16JUL20

TACAN RWY 18

SC-3, 23 MAR 2023 to 20 APR 2023