

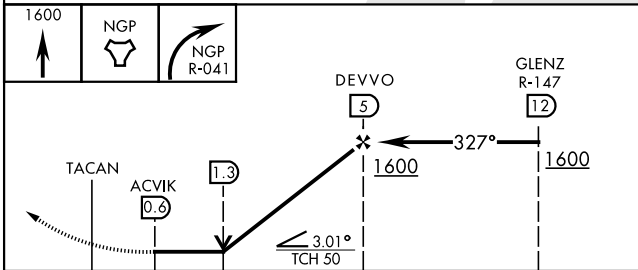
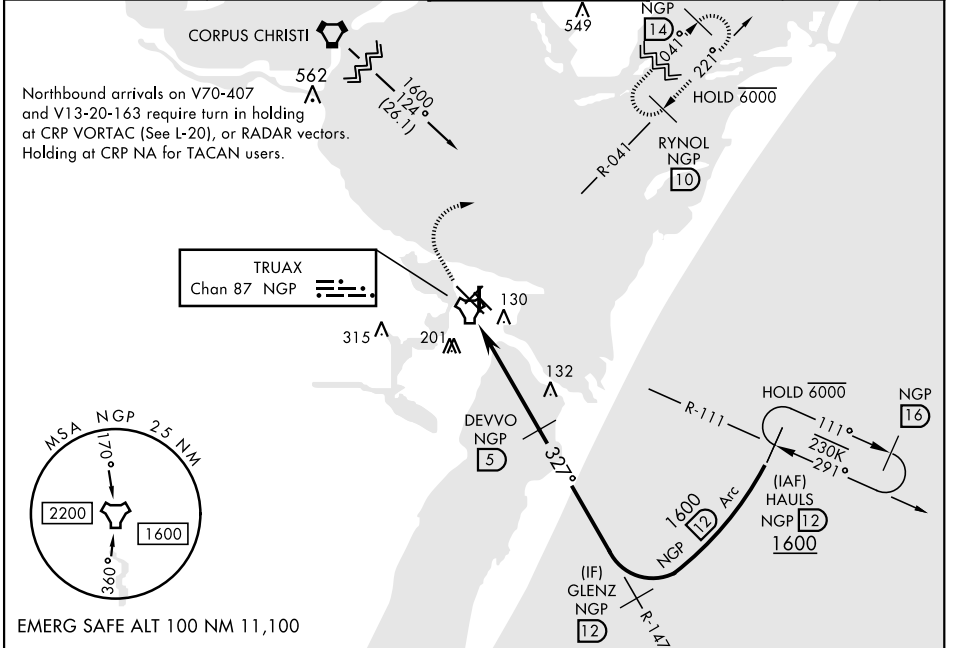
CORPUS CHRISTI, TEXAS

# TACAN RWY 36

TACAN NGP Chan <b>87</b>	APCH CRS <b>327°</b>	Rwy ldg TDZE Arprt Elev <b>5002</b> <b>19</b> <b>19</b>
-----------------------------	-------------------------	--

AL-98 [USN] CORPUS CHRISTI NAS (TRUAX FLD) (KNGP)

<b>▼</b> When local altimeter setting not received, use Corpus Christi altimeter setting.	MISSED APPROACH: Climb to 1600 direct NGP TACAN and turn right to intercept R-041 to RYNOL and hold.				
ATIS ★ <b>127.9 290.9</b>	CORPUS CHRISTI APP CON <b>128.675 343.75</b>	NAVY CORPUS TOWER ★ <b>134.85 340.2</b>	GND CON <b>118.7 257.85</b>	CLNC DEL <b>314.3</b>	ASR/ PAR



CATEGORY	A		B		C		D	
S-36	420-1	401 (500-1)	420-1½	401 (500-1½)	420-1½	401 (500-1½)	620-2	601 (700-2)
<b>C</b> CIRCLING	480-1	461 (500-1)	540-1½	521 (600-1½)	540-1½	521 (600-1½)	620-2	601 (700-2)
CORPUS CHRISTI ALTIMETER SETTING								
S-36	460-1	441 (500-1)	460-1½	441 (500-1½)	460-1½	441 (500-1½)	660-2	641 (700-2)
<b>C</b> CIRCLING	500-1	481 (500-1)	520-1	501 (600-1)	580-1½	561 (600-1½)	660-2	641 (700-2)

ELEV 19	TDZE 19
---------	---------

HIRL Rwy 4-22, 13R-31L  
HIRL Rwy 13L-31R, 18-36  
REIL Rwy 4-22, 13L-31R, 18-36, 31L

TWR

311 31R

114 Δ

327° to TACAN

CORPUS CHRISTI, TEXAS 27°42'N-97°17'W CORPUS CHRISTI NAS (TRUAX FLD) (KNGP)

Amtd 1 16JUL20

# TACAN RWY 36

SC-3, 23 MAR 2023 to 20 APR 2023

SC-3, 23 MAR 2023 to 20 APR 2023