

# TACAN X RWY 31L

TACAN NGP Chan <b>87</b>	APCH CRS <b>291°</b>	Rwy Idg TDZE Arpt Elev <b>8002</b> <b>18</b> <b>19</b>
-----------------------------	-------------------------	---

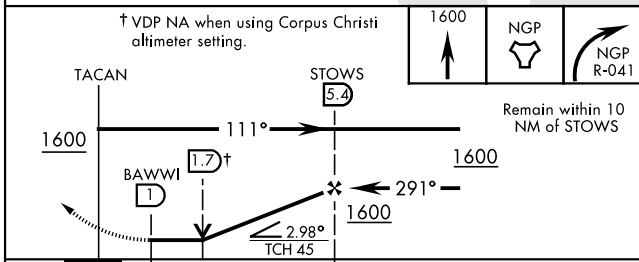
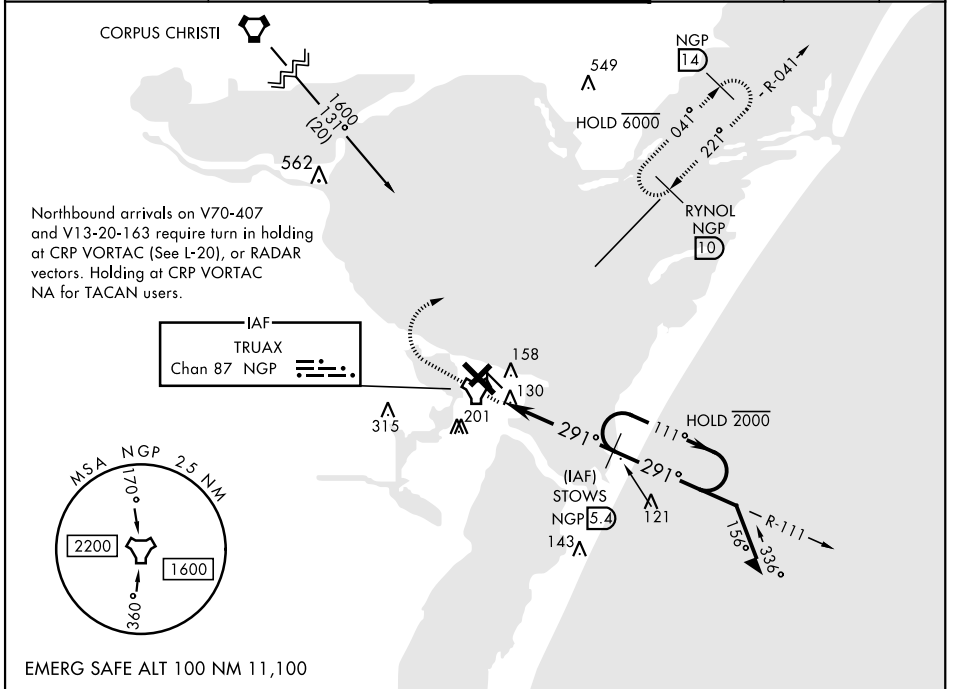
AL-98 [USN]

CORPUS CHRISTI NAS (TRUAX FLD) (KNGP)

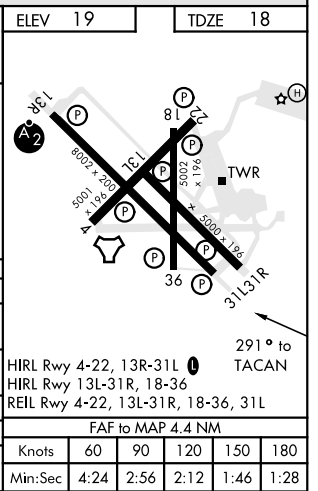
**▼** When local altimeter setting not received, use Corpus Christi altimeter setting.

**MISSED APPROACH:** Climb to 1600 direct NGP TACAN and turn right to intercept R-041 to RYNOL and hold.

ATIS ★ <b>127.9 290.9</b>	CORPUS CHRISTI APP CON <b>128.675 343.75</b>	NAVY CORPUS TOWER ★ <b>134.850 340.2</b>	GND CON <b>118.7 257.85</b>	CLNC DEL <b>314.3</b>	ASR/ PAR
------------------------------	---	---	--------------------------------	--------------------------	-------------



CATEGORY	A	B	C	D
S-31L	420-1 402 (500-1)		420-1½ 402 (500-1½)	
<b>CIRCLING</b>	480-1 461 (500-1)		540-1½ 521 (600-1½)	620-2 601 (700-2)
CORPUS CHRISTI ALTIMETER SETTING				
S-31L	460-1 442 (500-1)		460-1¾ 442 (500-1¾)	
<b>CIRCLING</b>	500-1 481 (500-1)	520-1 501 (600-1)	580-1½ 561 (600-1½)	660-2 641 (700-2)



CORPUS CHRISTI, TEXAS  
Amdt 1 16JUL20

27°42'N-97°17'W

CORPUS CHRISTI NAS (TRUAX FLD) (KNGP)

# TACAN X RWY 31L

SC-3, 23 MAR 2023 to 20 APR 2023

SC-3, 23 MAR 2023 to 20 APR 2023