

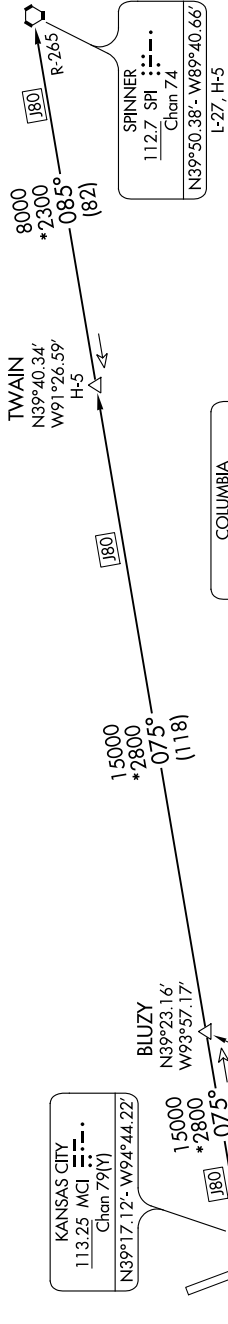
# LAKES FOUR DEPARTURE

NC-2, 23 MAR 2023 to 20 APR 2023

RADAR required. DME required.

**TOP ALTITUDE:**  
10000

KANSAS CITY DEP CON  
124.7 284.7



KANSAS CITY  
113.25 MCI  
Chan 79(Y)  
N39°17.12' - W94°44.22'

BLUZY  
N39°23.16'  
W93°57.17'

NAPOLEON  
114.0 ANX  
Chan 87  
N39°05.73' - W94°07.73'

COLUMBIA  
110.2 COU  
Chan 39  
N38°48.65' - W92°13.10'

SPINNER  
112.7 SPI  
Chan 74  
N39°50.38' - W89°40.66'

TAKEOFF MINIMUMS  
Rwys 16, 34: Standard.

(NARRATIVE ON FOLLOWING PAGE)

NOTE: Chart not to scale.

NC-2, 23 MAR 2023 to 20 APR 2023

# LAKES FOUR DEPARTURE