

KANSAS CITY DEP CON  
124.7 284.7

ST JOSEPH  
115.5 STJ ---  
Chan 102

SALINA  
117.1 SLN   
Chan 118  
N38°55.51' W97°37.28'  
L-10, H-5

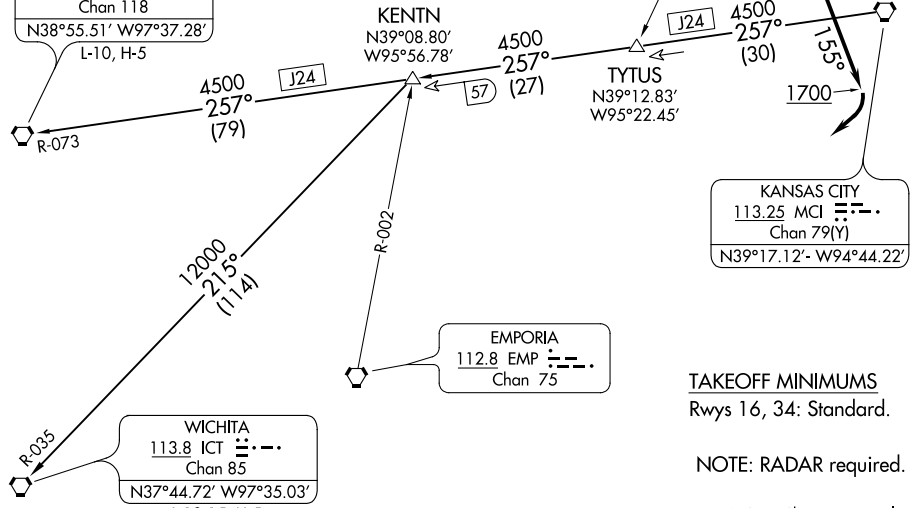
KENTN  
N39°08.80'  
W95°56.78'

TYTUS  
N39°12.83'  
W95°22.45'

KANSAS CITY  
113.25 MCI   
Chan 79(Y)  
N39°17.12' W94°44.22'

EMPORIA  
112.8 EMP   
Chan 75

WICHITA  
113.8 ICT   
Chan 85  
N37°44.72' W97°35.03'  
L-10-15, H-5



TAKEOFF MINIMUMS  
Rwys 16, 34: Standard.

NOTE: RADAR required.

NOTE: Chart not to scale.

## DEPARTURE ROUTE DESCRIPTION

TAKEOFF RUNWAY 16: Climb heading 155° to 1700 before turning southwest, thence . . . .  
. . . . climb on assigned heading for RADAR vectors to appropriate route. Expect filed  
altitude 10 minutes after departure.

TAKEOFF RUNWAY 34: Climb on assigned heading for RADAR vectors to appropriate  
route. Expect filed altitude 10 minutes after departure.

KENTN TRANSITION (WLDCT5.KENTN): From over MCI VORTAC on MCI R-257 to  
KENTN.

SALINA TRANSITION (WLDCT5.SLN): From over MCI VORTAC on MCI R-257 and  
SLN R-073 to SLN VORTAC.

WICHITA TRANSITION (WLDCT5.ICT): From over MCI VORTAC on MCI R-257 to  
KENTN, then on ICT R-035 to ICT VORTAC.

NC-2, 23 MAR 2023 to 20 APR 2023

NC-2, 23 MAR 2023 to 20 APR 2023