

RNAV (GPS) RWY 24

LAKEHURST MAXFIELD FLD,

(JOINT BASE MC GUIRE DIX LAKEHURST) (KNEL)

WAAS Chan 60342 W24A	APCH CRS 242°	Rwy Idg 5002 TDZE 101 Arpt Elev 101
--	-------------------------	--

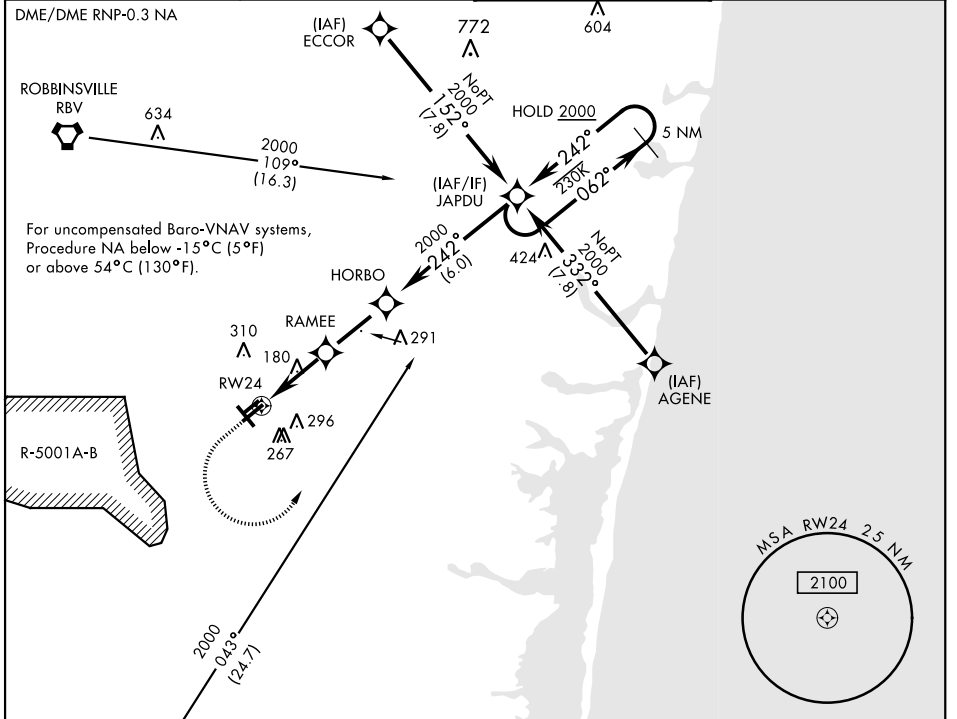
AL-223 [USN]

▽ * When ALS inop, increase vis to ¼ mile.
 ** When ALS inop, increase CAT ABC vis to 7/8 mile;
 CAT D vis to 1 mile.
 *** When ALS inop, increase vis to 1 mile.

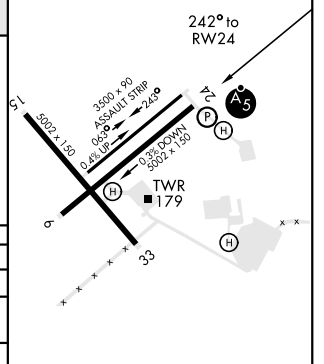
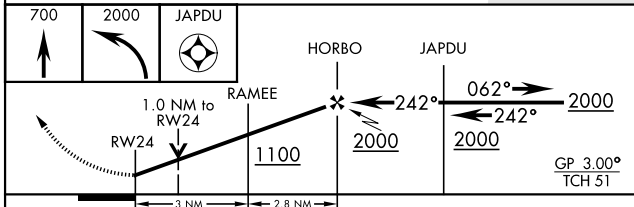
MALSR


MISSED APPROACH: Climb to 700 then climbing left turn to 2000 direct JAPDU and hold.

ATIS * 276.525	MC GUIRE APP CON 126.475 363.8	TOWER * 127.775 360.2	GND CON 118.375 307.375
---------------------------------	---	--	--



ELEV 101	TDZE 101
----------	----------



CATEGORY	A	B	C	D
LPV DA *	301-½	200	(200-½)	
RNAV/ VNAV DA **	383-½ 282 (300-½)	403-½ 302 (400-½)	418-½ 317 (400-½)	436-½ 335 (400-½)
RNAV MDA ***	460-½ 640-1	359 (400-½) 720-1	460-5/8 720-1 3/4	359 (400-5/8) 720-2
CIRCLING	539 (600-1)	619 (700-1)	619 (700-1 3/4)	619 (700-2)

RNAV (GPS) RWY 24

NE-2, 23 MAR 2023 to 20 APR 2023