

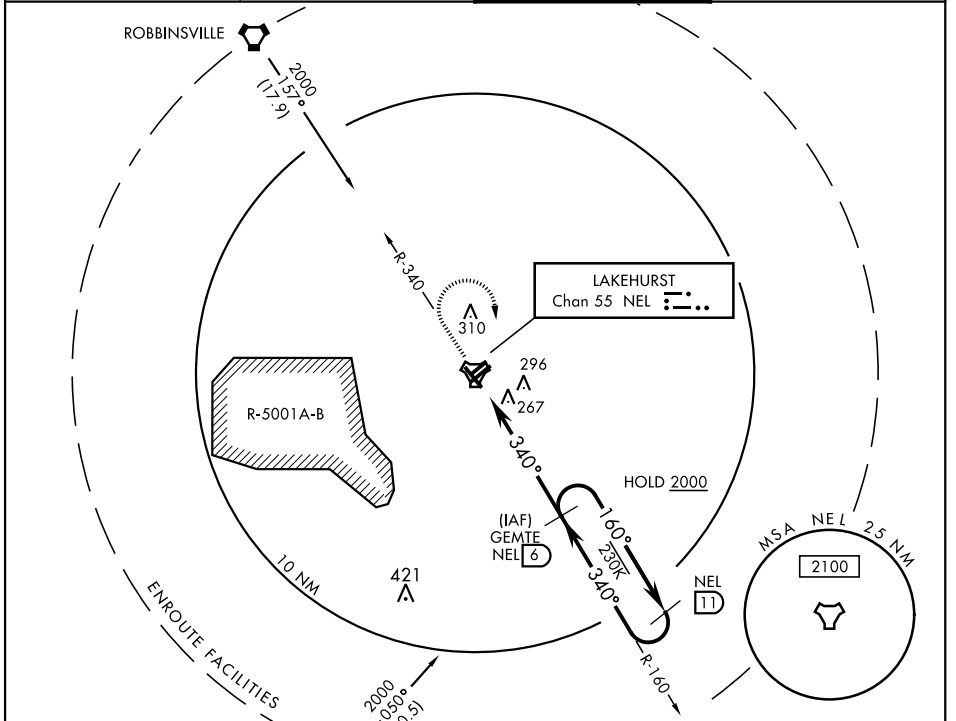
TACAN NEL Chan <b>55</b>	APCH CRS <b>340°</b>	Rwy Ldg TDZE Arpt Elev <b>5002</b> <b>88</b> <b>101</b>
-----------------------------	-------------------------	--

AL-223 [USN]

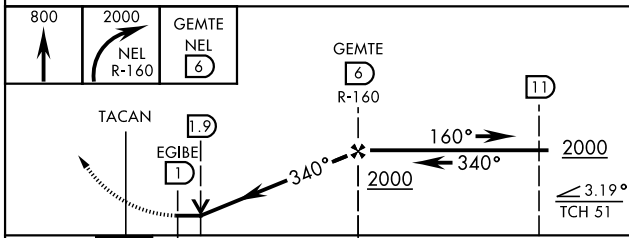
(JOINT BASE MC GUIRE DIX LAKEHURST) (KNEL)

<p><b>ATIS ★</b> 276.525</p>		<p>MC GUIRE APP CON 126.475 363.8</p>		<p><b>TOWER ★</b> 127.775 360.2</p>		<p>GND CON 118.375 307.375</p>	
----------------------------------	--	---	--	---	--	------------------------------------	--

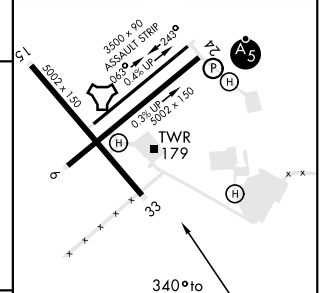
MISSED APPROACH: Climb to 800, then climbing right turn to 2000 to intercept NEL TACAN R-160 to GEMTE and hold.



EMERG SAFE ALT 100 NM 4100



ELEV 101	TDZE 88
----------	---------



CATEGORY	A	B	C	D
S-33	600-1 512 (500-1)		600- 1 3/8 512 (500-1 3/8)	
CIRCLING	640-1 539 (600-1)	720-1 619 (700-1)	720-1 3/4 619 (700-1 3/4)	720-2 619 (700-2)

HIRL Rwy 6-24	MIRL Rwy 063°-243°
---------------	--------------------

NE-2, 23 MAR 2023 to 20 APR 2023

NE-2, 23 MAR 2023 to 20 APR 2023