

LAKEHURST, NEW JERSEY

VOR or VOR/DME or TACAN Y RWY 33

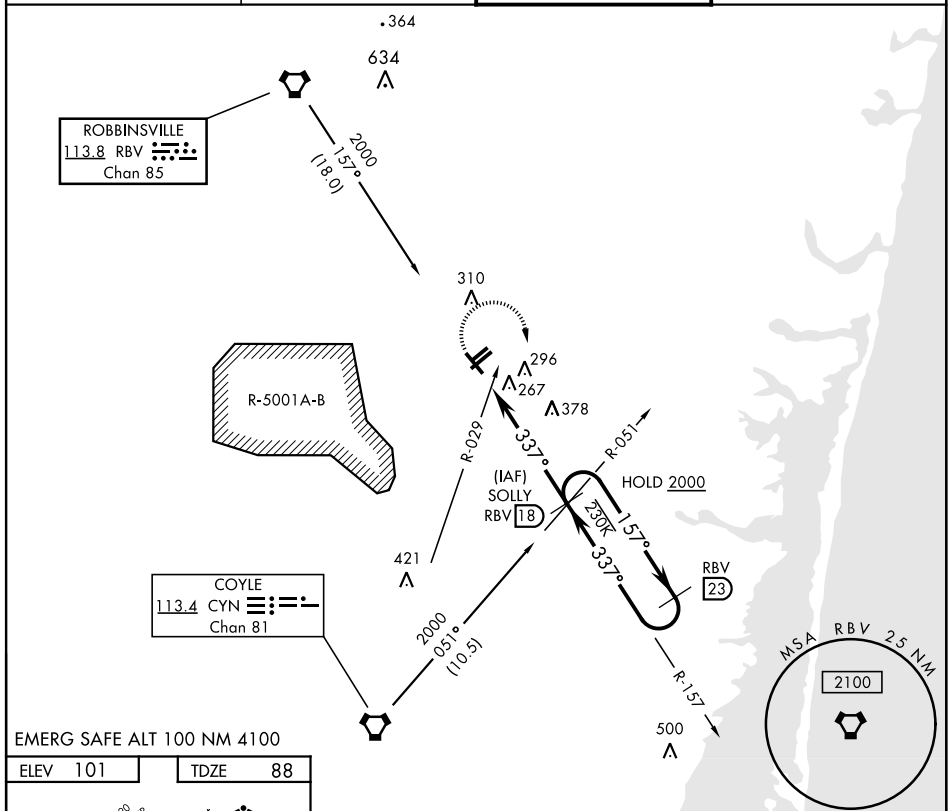
LAKEHURST MAXFIELD FLD,

(JOINT BASE MC GUIRE DIX LAKEHURST) (KNEL)

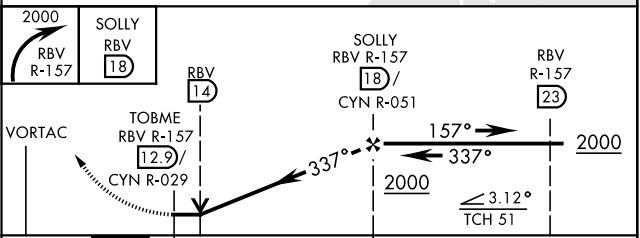
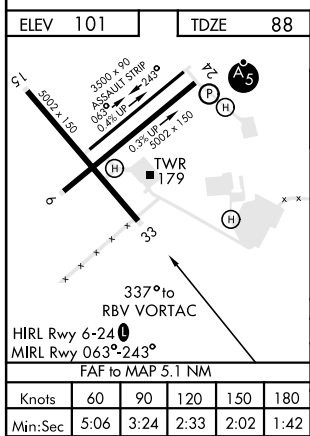
VORTAC RBV 113.8 Chan 85	APCH CRS 337°	Rwy Idg TDZE Arprt Elev 5002 88 101
--	-------------------------	---

▼ MISSED APPROACH: Climbing right turn to 2000, intercept RBV VORTAC R-157 to SOLLY and hold.

ATIS ★ 276.525	MC GUIRE APP CON 126.475 363.8	TOWER ★ 127.775 360.2	GND CON 118.375 307.375
--------------------------	--	---------------------------------	-----------------------------------



EMERG SAFE ALT 100 NM 4100



CATEGORY	A	B	C	D
S-33	660-1 572 (600-1)	660-1 572 (600-1)	660-1 572 (600-1)	660-1 572 (600-1)
CIRCLING	660-1 559 (600-1)	720-1 619 (700-1)	720-1 619 (700-1)	720-2 619 (700-2)

LAKEHURST, NEW JERSEY
Amdt 3 30JAN20

40°02'N-74°21'W

LAKEHURST MAXFIELD FLD,

(JOINT BASE MC GUIRE DIX LAKEHURST) (KNEL)

VOR or VOR/DME or TACAN Y RWY 33

NE-2, 23 MAR 2023 to 20 APR 2023

NE-2, 23 MAR 2023 to 20 APR 2023