

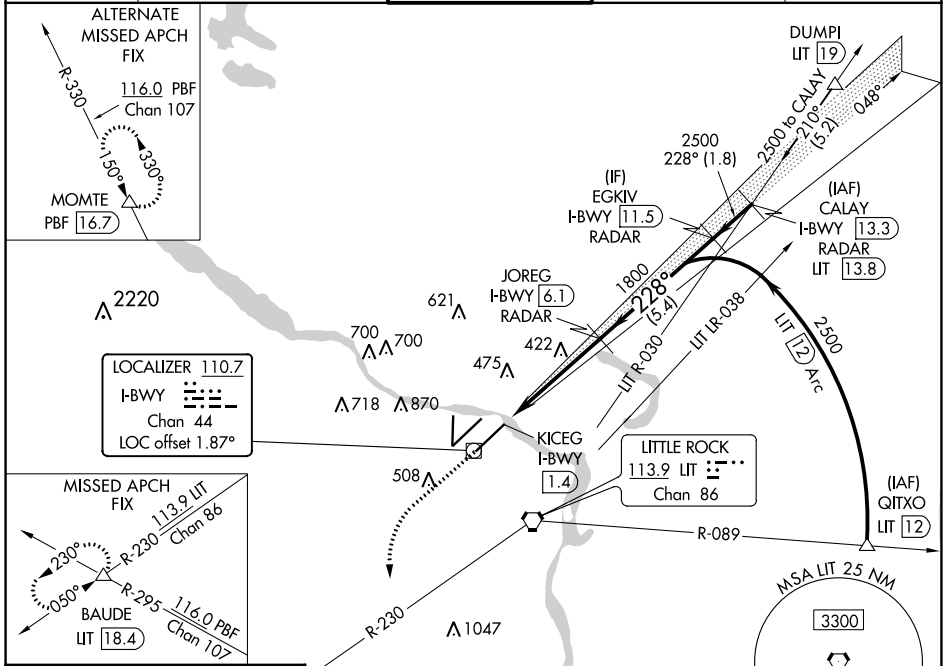
LOC/DME I-BWY <b>110.7</b> Chan <b>44</b>	APP CRS <b>228°</b>	Rwy Idg TDZE <b>7200</b> <b>260</b>	Apt Elev <b>266</b>
---	------------------------	---	------------------------

# ILS or LOC RWY 22L

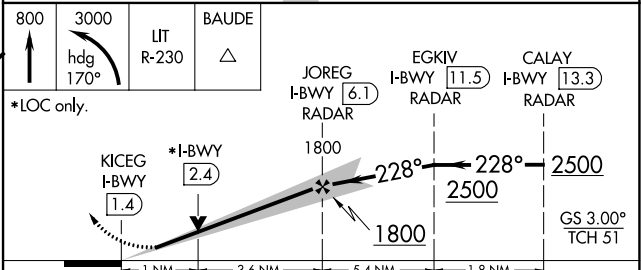
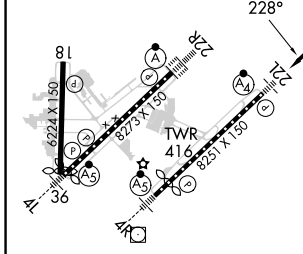
BILL AND HILLARY CLINTON NTL/ADAMS FLD (LIT)

D-ATIS <b>125.65</b>		LITTLE ROCK APP CON <b>135.4 353.6</b>		ADAMS TOWER <b>118.7 257.8</b>		GND CON <b>121.9 339.8</b>		CLNC DEL <b>118.95</b>		
DME or RADAR required.					MALSF		MISSILE APPROACH: Climb to 800 then climbing left turn to 3000 on heading 170° and LIT VORTAC R-230 to BAUDE INT/LIT 18.4 DME and hold.			
Simultaneous approach authorized.										

D-ATIS <b>125.65</b>	LITTLE ROCK APP CON <b>135.4 353.6</b>	ADAMS TOWER <b>118.7 257.8</b>	GND CON <b>121.9 339.8</b>	CLNC DEL <b>118.95</b>
-------------------------	---	-----------------------------------	-------------------------------	---------------------------



ELEV 266	<b>D</b>	TDZE 260
----------	----------	----------



	A	B	C	D
CATEGORY	A	B	C	D
S-ILS 22L		510/40	250 (300-3/4)	
S-LOC 22L		640/40	380 (400-3/4)	
Knots	60	90	120	150
Min:Sec	4:36	3:04	2:18	1:50
1:32				
<b>C</b> CIRCLING	820-1 554 (600-1)	1000-1 734 (800-1)	1180-2 3/4 914 (1000-2 3/4)	1180-3 914 (1000-3)

SC-1, 23 MAR 2023 to 20 APR 2023

SC-1, 23 MAR 2023 to 20 APR 2023