

LOC/DME I-CNL <b>111.3</b> Chan 50	APP CRS <b>047°</b>	Rwy Idg <b>7200</b> TDZE <b>260</b> Apt Elev <b>266</b>
--	------------------------	---

# ILS or LOC RWY 4R

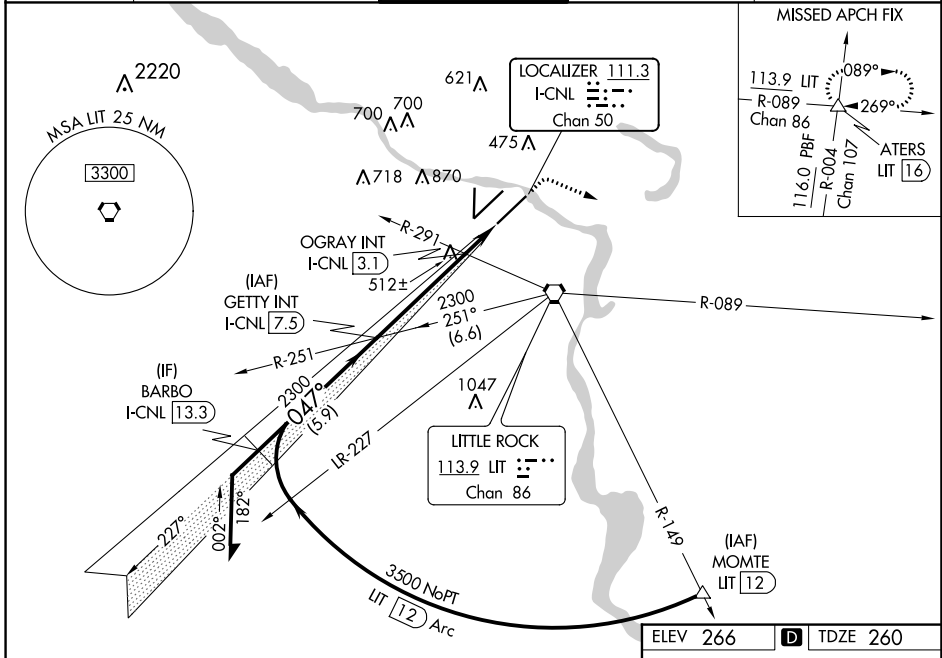
BILL AND HILLARY CLINTON NTL/ADAMS FLD (LIT)

**▼** Inop table does not apply to S-ILS 4R.  
**▲** Rwy 4R helicopter visibility reduction below ¾ NA.  
 Simultaneous approach authorized.



**MISSED APPROACH:** Climb to 800 then climbing right turn to 4000 on heading 110° and LIT VORTAC R-089 to ATERS INT/LIT 16 DME and hold.

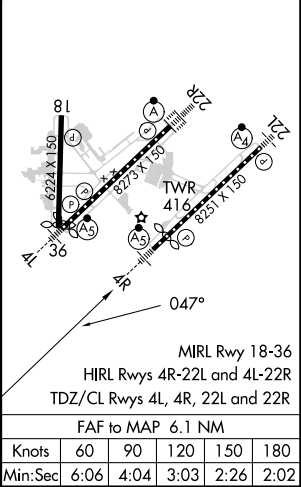
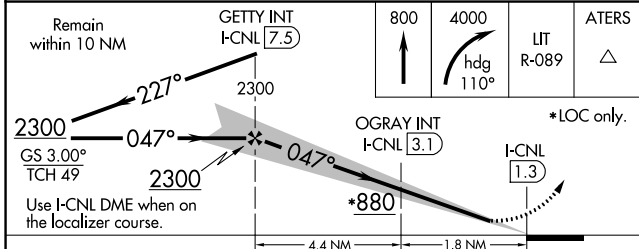
D-ATIS <b>125.65</b>	LITTLE ROCK APP CON <b>135.4 353.6</b>	ADAMS TOWER <b>118.7 257.8</b>	GND CON <b>121.9 339.8</b>	CLNC DEL <b>118.95</b>
-------------------------	---	-----------------------------------	-------------------------------	---------------------------



SC-1, 23 MAR 2023 to 20 APR 2023

SC-1, 23 MAR 2023 to 20 APR 2023

ELEV 266	<b>D</b> TDZE 260
----------	-------------------



CATEGORY	A	B	C	D
S-ILS 4R		510/40	250 (300-¾)	
S-LOC 4R	880/40	620 (700-¾)	880-1 ⅜	620 (700-1 ⅜)
<b>C</b> CIRCLING	880-1 614 (700-1)	1000-1 734 (800-1)	1180-2 ¾ 914 (1000-2 ¾)	1180-3 914 (1000-3)
*LOC only.				
OGRAY (DUAL VOR RECEIVERS OR DME REQUIRED)				
S-LOC 4R	780/40	520 (600-¾)	780/55	520 (600-1)
<b>C</b> CIRCLING	820-1 554 (600-1)	1000-1 734 (800-1)	1180-2 ¾ 914 (1000-2 ¾)	1180-3 914 (1000-3)

Knots	60	90	120	150	180
	Min:Sec	6:06	4:04	3:03	2:26