

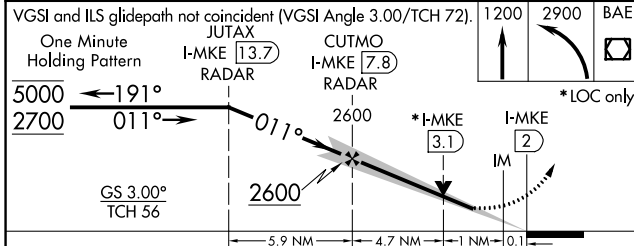
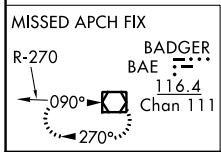
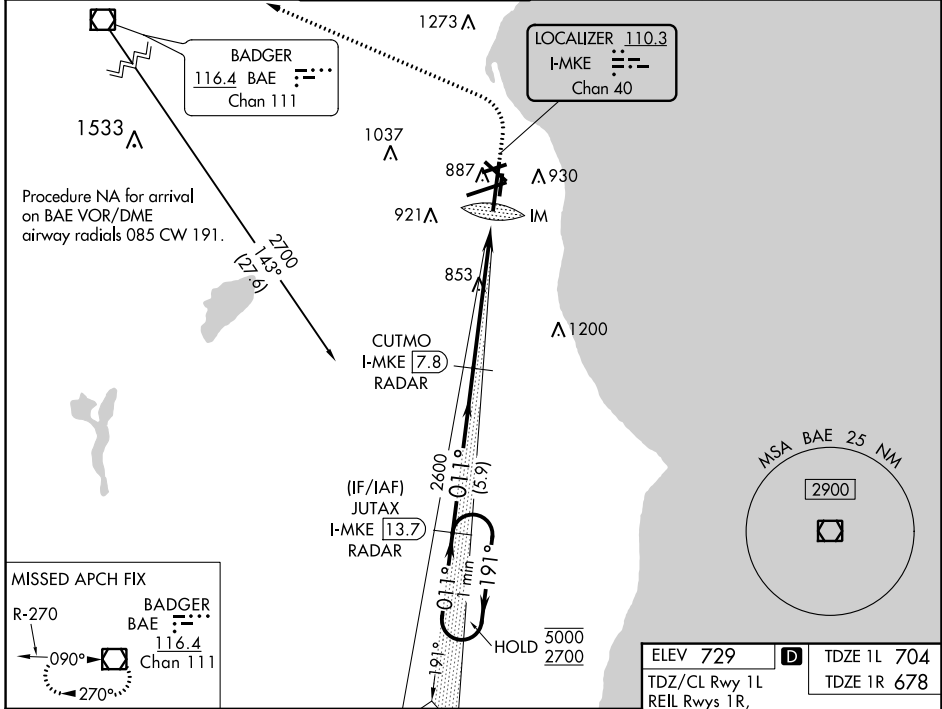
LOC/DME I-MKE 110.3 Chan 40	APP CRS 011°	Rwy 1L ldg 9080 TDZE 704 Apt Elev 729	Rwy 1R ldg 4182 TDZE 678 Apt Elev 729
--	------------------------	--	--

ILS or LOC RWY 1L

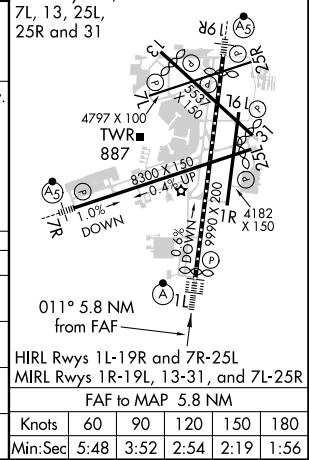
GENERAL MITCHELL INTL (MKE)

DME or RADAR required for procedure entry.	ALSF-2 Rwy 1L	MISSED APPROACH: Climb to 2000 then climbing left turn to 2900 direct BAE VOR/DME and hold.
--	------------------	---

D-ATIS 126.4	MILWAUKEE APP CON 126.5 307.0	MILWAUKEE TOWER 124.575 269.05	GND CON 121.8 263.125	CLNC DEL 120.8	CPDLC
------------------------	---	--	---------------------------------	--------------------------	-------



ELEV 729	TDZE 1L 704
TDZ/CL Rwy 1L	TDZE 1R 678
REIL Rws 1R, 7L, 13, 25L, 25R and 31	



CATEGORY	A	B	C	D
S-ILS 1L	904/18 200 (200-½)			
S-LOC 1L	1140/24	436 (500-½)	1140/40	436 (500-¾)
SIDESTEP 1R	1140-1	462 (500-1)	1140-1½ 462 (500-1½)	1140-2 462 (500-2)
CIRCLING	1240-1	511 (600-1)	1240-1½ 511 (600-1½)	1360-2 631 (700-2)

EC-3, 23 MAR 2023 to 20 APR 2023