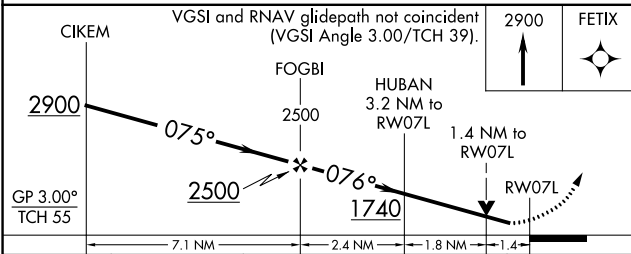
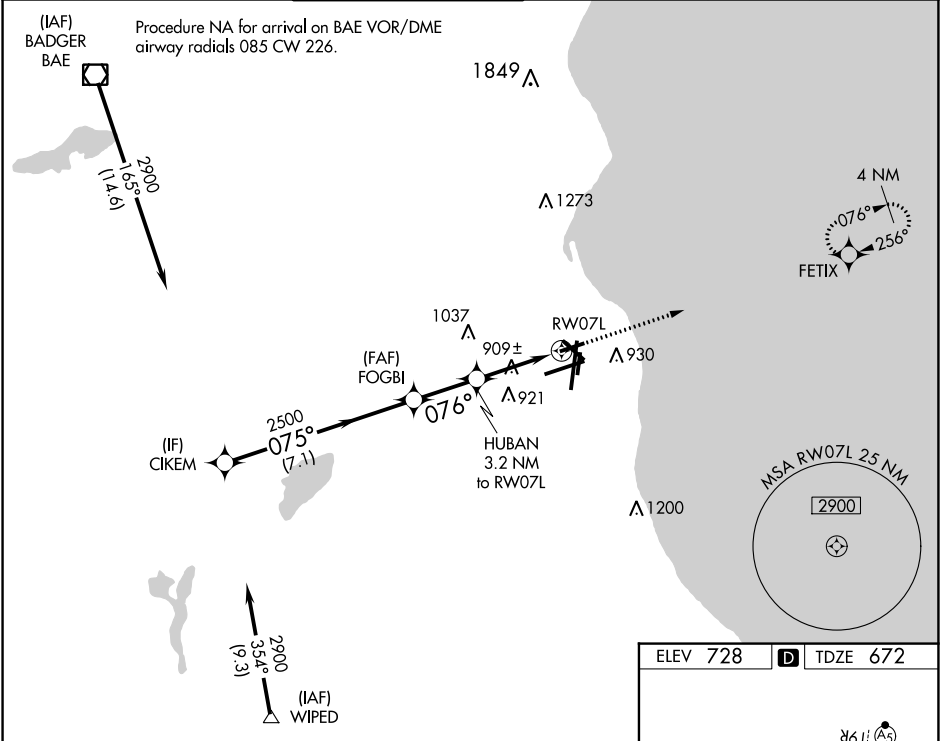


WAAS CH <b>42542</b> <b>W07B</b>	APP CRS <b>076°</b>	Rwy Idg <b>4797</b> TDZE <b>672</b> Apt Elev <b>728</b>
--	------------------------	--

# RNAV (GPS) RWY 7L

GENERAL MITCHELL INTL (MKE)

RNP APCH - GPS.		<p><b>▼</b> Rwy 7L helicopter visibility reduction below <math>\frac{3}{4}</math> SM NA. For uncompensated Baro-VNAV systems, LNAV/VNAV NA below -1°C or above 54°C.</p>		MISSED APPROACH: Climb to 2900 direct to FETIX and hold.	
D-ATIS <b>126.4</b>	MILWAUKEE APP CON <b>126.5 307.0</b>	MILWAUKEE TOWER <b>124.575 269.05</b>	GND CON <b>121.8 263.125</b>	CLNC DEL <b>120.8</b>	CPDLC



ELEV 728 **D** TDZE 672

4797 X 100 TWR 887

8300 X 150

1.0% DOWN

0.4% UP

0.6% DOWN

0.9% DOWN

4182

1R 150

TDZ/CL Rwy 1L  
REIL Rwy 1R, 7L, 13, 25L, 25R, and 31  
HIRL Rwy 1L-19R and 7R-25L  
MIRL Rwy 1R-19L, 13-31, and 7L-25R

CATEGORY	A	B	C	D
LPV DA	922-1		250 (200-1)	
LNAV/VNAV DA	1118-1 $\frac{3}{8}$		446 (400-1 $\frac{3}{8}$ )	
LNAV MDA	1160-1	488 (500-1)	1160-1 $\frac{3}{8}$	488 (500-1 $\frac{3}{8}$ )
<b>C</b> CIRCLING	1240-1	512 (600-1)	1240-1 $\frac{1}{2}$ 512 (600-1 $\frac{1}{2}$ )	1360-2 632 (700-2)

EC-3, 23 MAR 2023 to 20 APR 2023

EC-3, 23 MAR 2023 to 20 APR 2023