

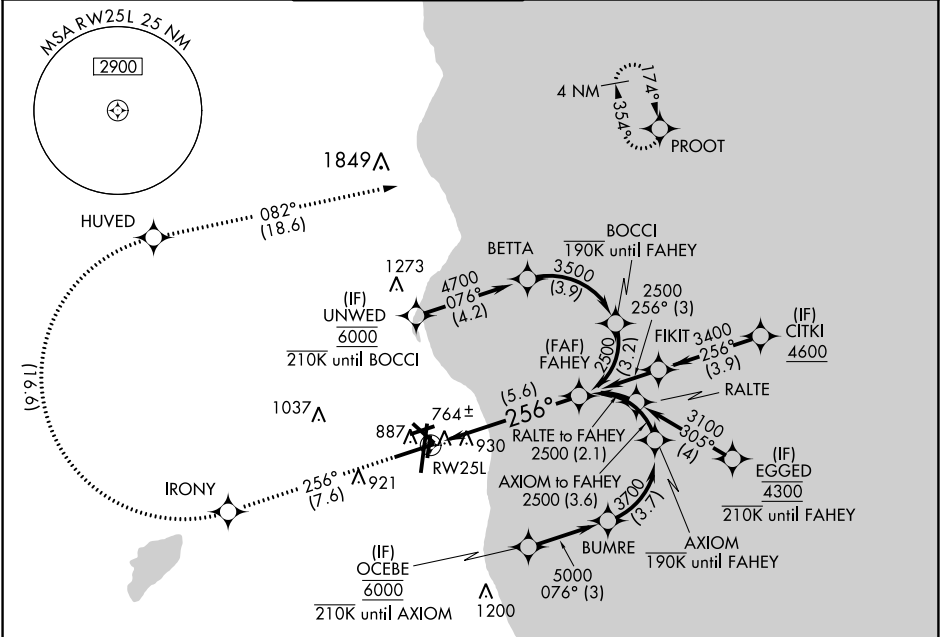
| | | |
|-------------|----------|-------------|
| APP CRS | Rwy Idg | 7867 |
| 256° | TDZE | 683 |
| | Apt Elev | 729 |

RNAV (RNP) Y RWY 25L

GENERAL MITCHELL INTL (MKE)

| | | |
|---|--|---|
| RF required. RNP AR APCH. | | MISSED APPROACH: Climb to 3700 on the RNAV missed approach route to PROOT and hold. |
| <p>▼ For uncompensated Baro-VNAV systems, procedure NA below -20°C or above 54°C.</p> | | |

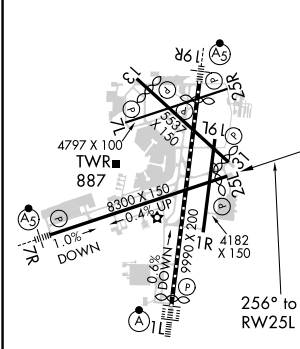
| | | | | | |
|--------------|--------------------|-----------------------|----------------------|--------------|-------|
| D-ATIS | MILWAUKEE APP CON | MILWAUKEE TOWER | GND CON | CLNC DEL | CPDLC |
| 126.4 | 126.5 307.0 | 124.575 269.05 | 121.8 263.125 | 120.8 | |



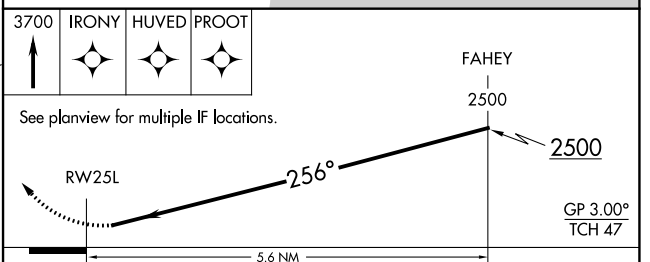
EC-3, 23 MAR 2023 to 20 APR 2023

EC-3, 23 MAR 2023 to 20 APR 2023

| | | |
|----------|----------|----------|
| ELEV 729 | D | TDZE 683 |
|----------|----------|----------|



TDZ/CL Rwy 1L
 REIL Rwy 1R, 7L,
 13, 25R, 25L and 31
 HIRL Rwy 1L-19R and 7R-25L
 MIRL Rwy 1R-19L, 13-31 and 7L-25R



| CATEGORY | A | B | C | D |
|-------------|---|------------------------------------|--|---|
| RNP 0.10 DA | | 1087-1 ³ / ₈ | 404 (400-1 ³ / ₈) | |
| RNP 0.30 DA | | 1256-2 | 573 (600-2) | |

AUTHORIZATION REQUIRED