

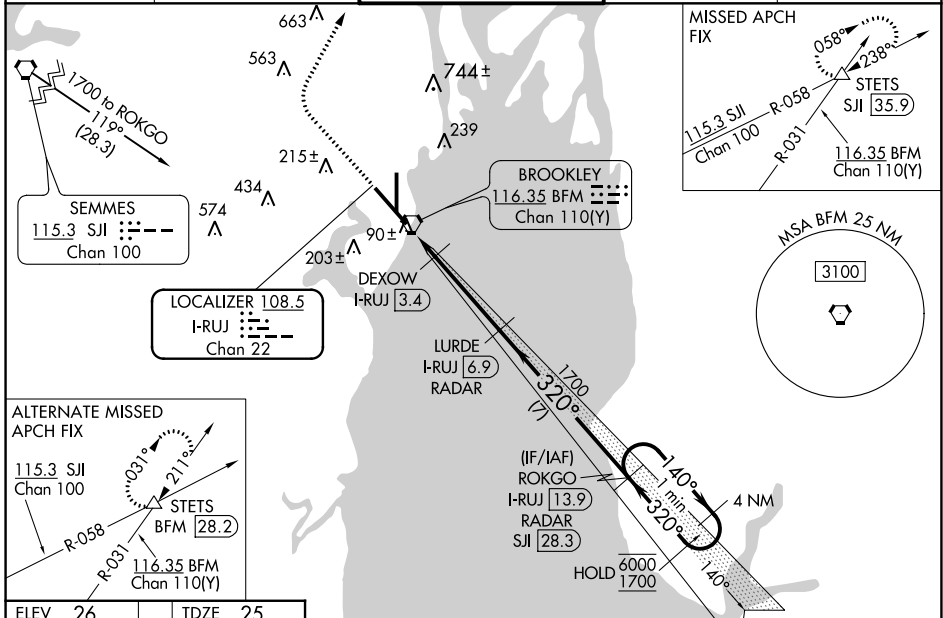
LOC/DME I-RUJ 108.5 Chan 22	APP CRS 320°	Rwy Idg 9618 TDZE 25 Apt Elev 26
--	------------------------	---

ILS or LOC RWY 32

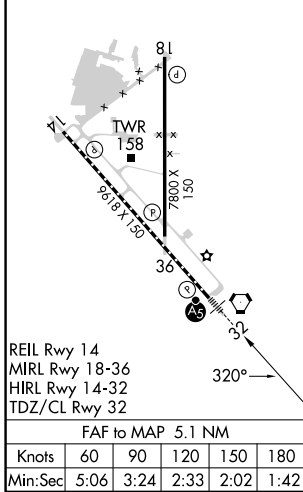
MOBILE INTL (BFM)

DME or RADAR required.	MALS R 	MISSED APPROACH: Climb to 800 then climbing right turn to 2000 on heading 030° and on SJI R-058 to STETS INT/SJI 35.9 DME and hold.
 For inop ALS, increase S-LOC 32 Cat C/D visibility to 1¾ and DEXOW S-LOC 32 Cat C/D visibility to RVR 4500.		

ATIS 135.575	MOBILE APP CON ★ 118.5 269.3	DOWNTOWN TOWER ★ 118.8 (CTAF) 251.1	GND CON 121.7 239.3	UNICOM 122.95
------------------------	--	---	-------------------------------	-------------------------



ELEV 26	TDZE 25
---------	---------



800	2000	SJI R-058	STETS	VGSI and ILS glidepath not coincident (VGSI Angle 3.00/TCH 71).
				LURDE I-RUJ [6.9] RADAR
				ROKGO I-RUJ [13.9] RADAR
				DEXOW I-RUJ [3.4]
				I-RUJ [1.8]
				I-RUJ [2.6]
				1700
				580
				1700
				320°
				140°
				6000
				1700
				GS 3.00° TCH 55
				0.8 NM 0.8 NM 3.5 NM 7 NM
CATEGORY	A	B	C	D
S-ILS 32	225/18		200 (200-½)	
S-LOC 32	580/24	555 (600-½)	580/60	555 (600-1¼)
CIRCLING	680-1	654 (700-1)	680-1¾ 654 (700-1¾)	1100-3 1074 (1100-3)
DEXOW FIX MINIMUMS				
S-LOC 32	340/24		315 (400-½)	
CIRCLING	680-1	654 (700-1)	680-1¾ 654 (700-1¾)	1100-3 1074 (1100-3)

SE-4, 23 MAR 2023 to 20 APR 2023

SE-4, 23 MAR 2023 to 20 APR 2023