

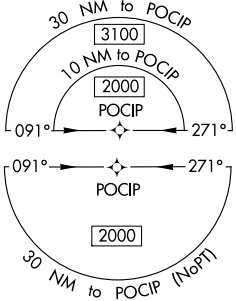
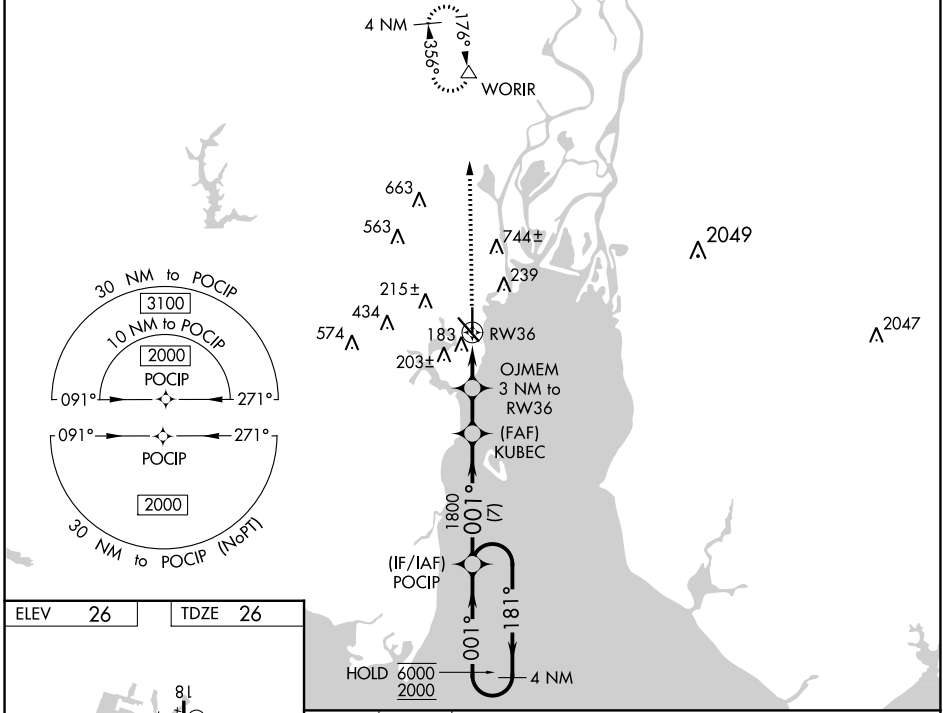
WAAS CH <b>56511</b> <b>W36A</b>	APP CRS <b>001°</b>	Rwy Idg <b>7800</b> TDZE <b>26</b> Apt Elev <b>26</b>
--	------------------------	---

# RNAV (GPS) RWY 36

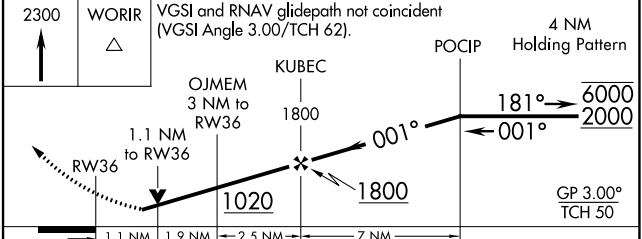
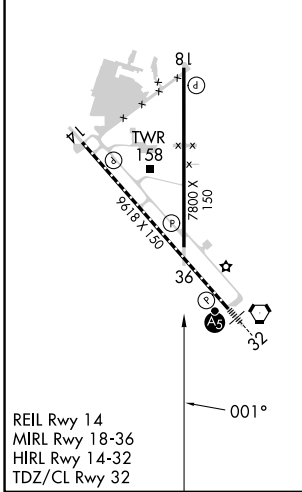
MOBILE INTL (BFM)

RNP APCH - GPS.		MISSED APPROACH: Climb to 2300 direct WORIR and hold.	
<p><b>⚠</b> Rwy 36 helicopter visibility reduction below 3/4 SM NA. For uncompensated Baro-VNAV systems, LNAV/VNAV NA below -2°C or above 54°C.</p>			

ATIS <b>135.575</b>	MOBILE APP CON ★ <b>118.5 269.3</b>	DOWNTOWN TOWER ★ <b>118.8 (CTAF) 0 251.1</b>	GND CON <b>121.7 239.3</b>	UNICOM <b>122.95</b>
------------------------	--	---	-------------------------------	-------------------------



ELEV <b>26</b>	TDZE <b>26</b>
----------------	----------------



CATEGORY	A	B	C	D
LPV DA		304-1	278 (300-1)	
LNAV/VNAV DA		364-1	338 (400-1)	
LNAV MDA	440-1	414 (500-1)	440-1 1/8	414 (500-1 1/8)
CIRCLING	680-1	654 (700-1)	680-1 3/4	1100-3 1074 (1100-3)

SE-4, 23 MAR 2023 to 20 APR 2023

SE-4, 23 MAR 2023 to 20 APR 2023