

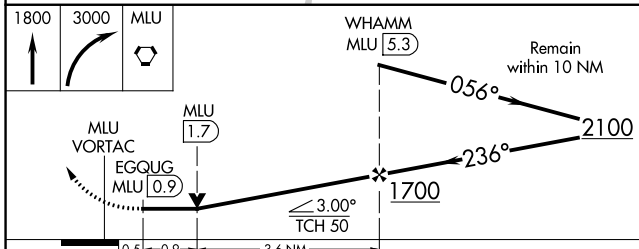
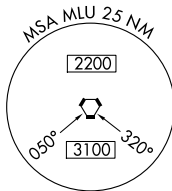
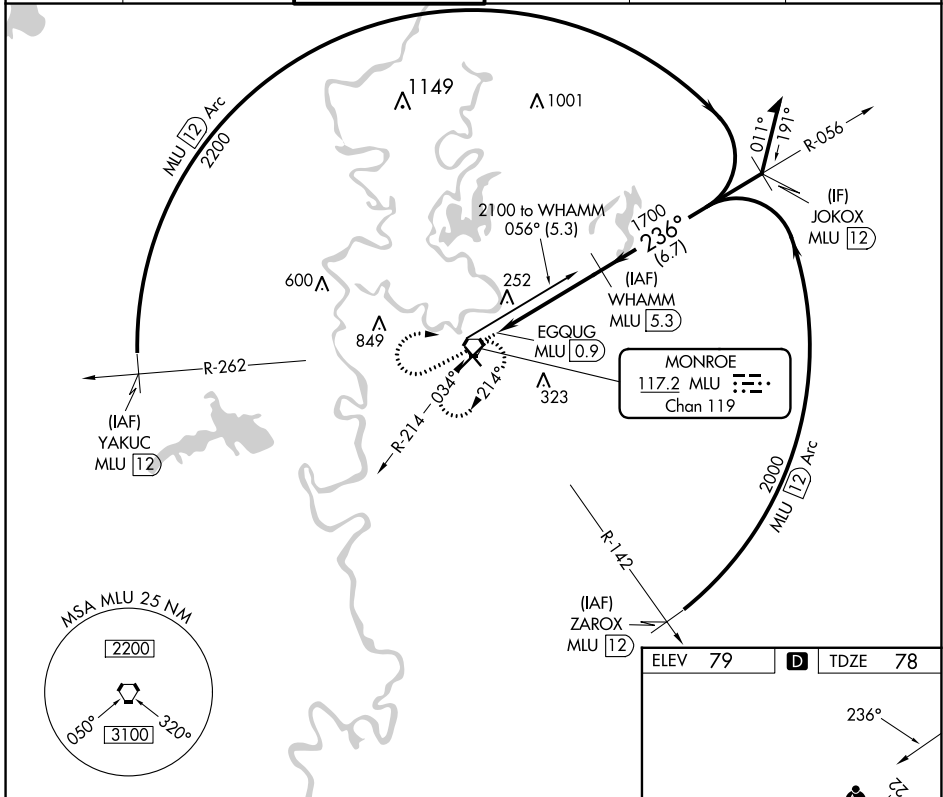
VORTAC MLU <b>117.2</b> Chan <b>119</b>	APP CRS <b>236°</b>	Rwy Idg <b>7504</b> TDZE <b>78</b> Apt Elev <b>79</b>
---	------------------------	---

# VOR RWY 22

MONROE RGNL (MLU)

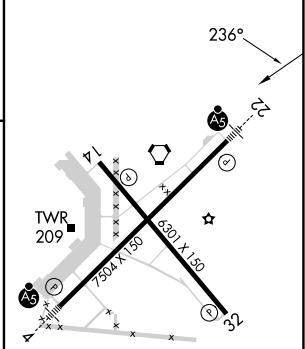
DME required. ⚠ Circling Rwy 14 NA at night. Rwy 22 helicopter visibility reduction below 3/4 SM NA. For inop ALS, increase S-22 Cat A/B ASR visibility to 1 SM, and Cat C/D to 1 1/2 SM.	MALSR ⚠	MISSED APPROACH: Climb to 1800 then climbing right turn to 3000 direct MLU VORTAC and hold, continue climb-in-hold to 3000.
--	------------	---

ATIS <b>125.05</b>	MONROE APP CON ★ <b>118.15 290.475</b>	MONROE TOWER ★ <b>118.9</b> (CTAF) <b>257.8</b>	GND CON <b>121.9</b>	CLNC DEL <b>121.65</b>	UNICOM <b>122.95</b>
-----------------------	---	--	-------------------------	---------------------------	-------------------------



CATEGORY	A	B	C	D
S-22	560-3/4 482 (500-3/4)		560-1 482 (500-1)	
CIRCLING	560-1 481 (500-1)	580-1 501 (600-1)	740-1 3/4 661 (700-1 3/4)	1160-3 1081 (1100-3)

ELEV 79	D	TDZE 78
---------	---	---------



REIL Rwy 14 and 32  
MIRL Rwy 14-32  
HIRL Rwy 4-22

SC-4, 23 MAR 2023 to 20 APR 2023

SC-4, 23 MAR 2023 to 20 APR 2023