

RNAV (RNP) Z RWY 4R

NEWARK LIBERTY INTL (EWR)

APP CRS	Rwy Idg	8810
039°	TDZE	11
	Apt Elev	17

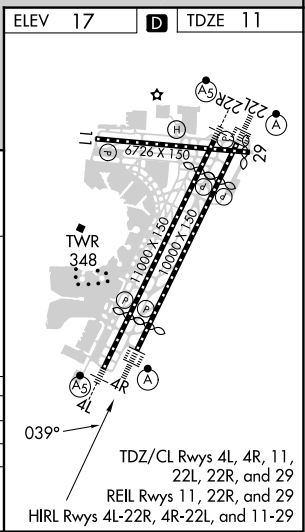
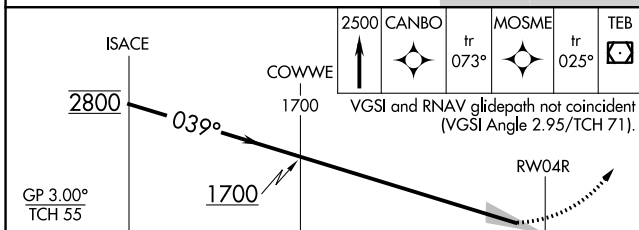
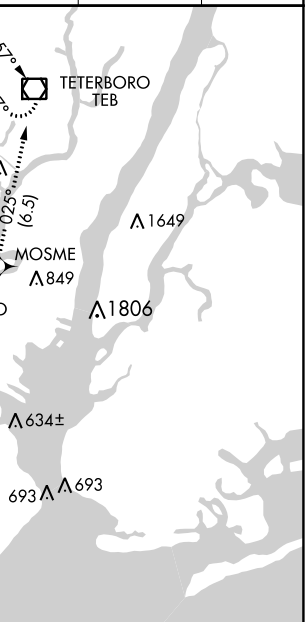
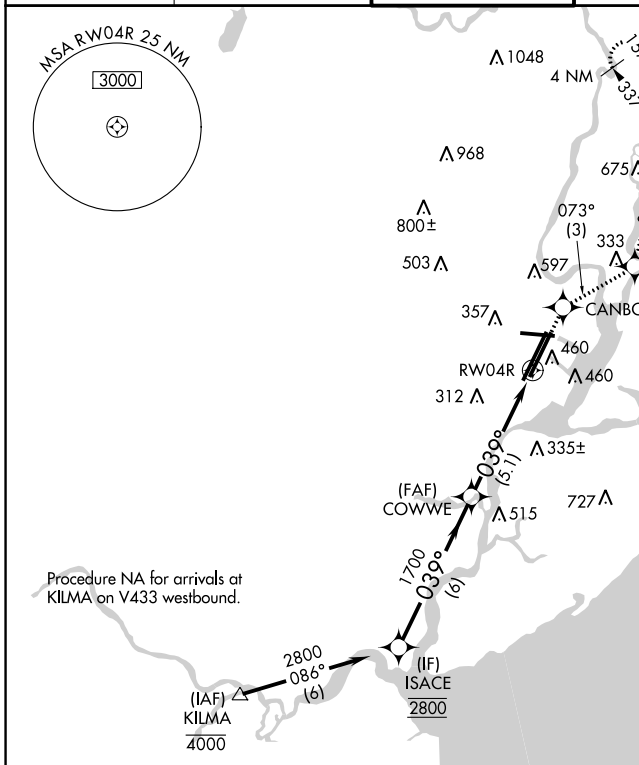
RNP AR APCH.

▼ For uncompensated Baro-VNAV systems, procedure NA below -3°C or above 54°C. For inop ALS, increase RNP 0.15 all Cats visibility to RVR 6000 and RNP 0.30 all Cats visibility to 1 3/8 SM.
 ▲ NA *Missed approach requires minimum climb of 317 feet per NM to 700.

ALSF-2

MISSED APPROACH: Climb to 2500 direct CANBO and on track 073° to MOSME and on track 025° to TEB VOR/DME and hold.

D-ATIS	NEW YORK APP CON	NEWARK TOWER	GND CON	CLNC DEL	CPDLC
115.7 134.825	128.55 379.9	118.3 257.6	121.8	118.85	



CATEGORY	A	B	C	D
*RNP 0.15 DA		396/40	385 (400-3/4)	
RNP 0.30 DA		490/60	479 (500-1/2)	

AUTHORIZATION REQUIRED

NE-2, 23 MAR 2023 to 20 APR 2023

NE-2, 23 MAR 2023 to 20 APR 2023