

VOR/DME JFK	APP CRS	Rwy ldg	6726
115.9	115°	TDZE	17
Chan 106		Apt Elev	17

VOR RWY 11

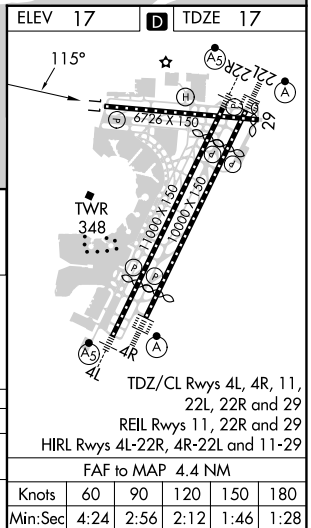
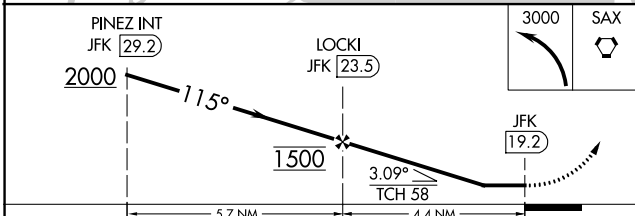
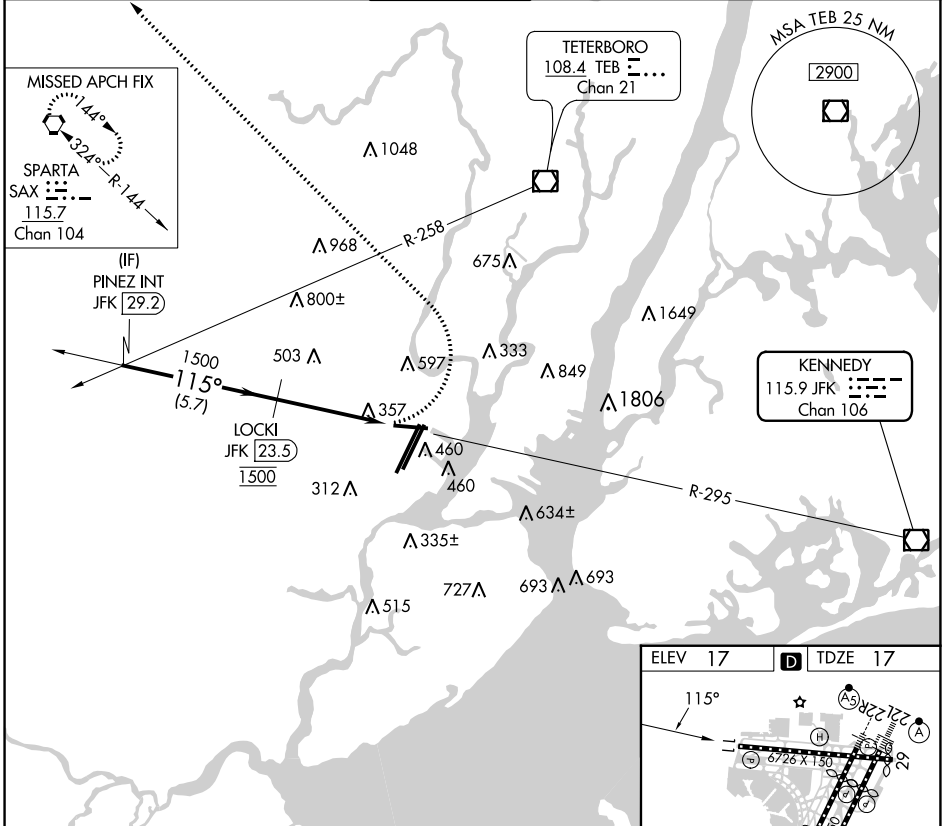
NEWARK LIBERTY INTL (EWR)

DME required. RADAR required for procedure entry.

⚠ Circling to Rwy 29 NA at night. Rwy 11 helicopter visibility reduction below 1 SM NA. Rwy 11 Straight-in and Circling minimums NA at night.

MISSED APPROACH: Climbing left turn to 3000 direct SAX VORTAC and hold.

D-ATIS	NEW YORK APP CON	NEWARK TOWER	GND CON	CLNC DEL	CPDLC
115.7 134.825	128.55 379.9	118.3 257.6	121.8	118.85	



CATEGORY	A	B	C	D
S-11	1000-1¼ 983 (1000-1¼)	1000-1½ 983 (1000-1½)	1000-3	983 (1000-3)
C CIRCLING	1000-1¼ 983 (1000-1¼)	1000-1½ 983 (1000-1½)	1000-3	983 (1000-3)

NE-2, 23 MAR 2023 to 20 APR 2023

NE-2, 23 MAR 2023 to 20 APR 2023