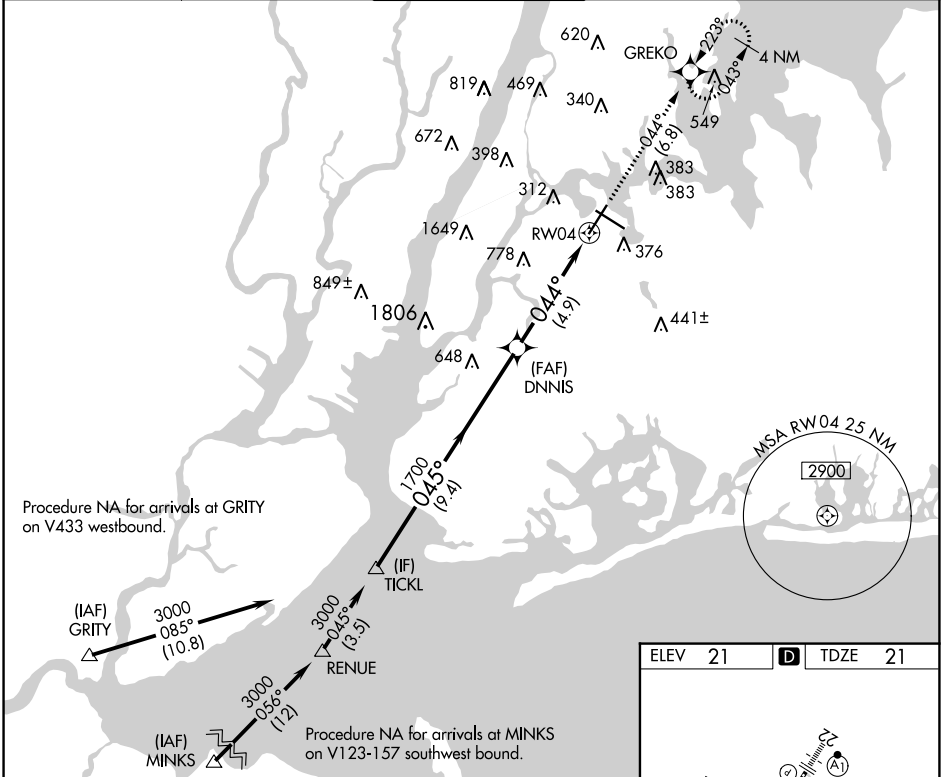


|             |          |             |
|-------------|----------|-------------|
| APP CRS     | Rwy Idg  | <b>7001</b> |
| <b>044°</b> | TDZE     | <b>21</b>   |
|             | Apt Elev | <b>21</b>   |

# RNAV (RNP) Z RWY 4

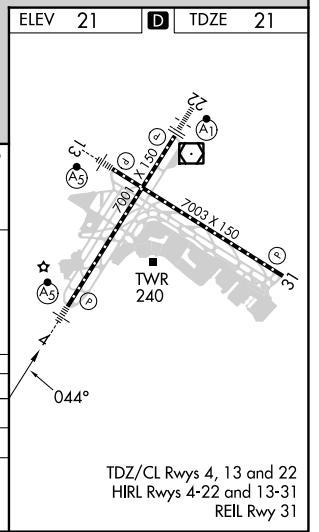
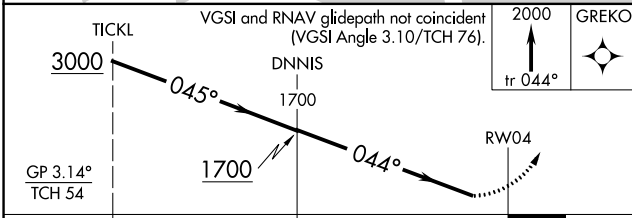
LAGUARDIA (LGA)

|   |               |                  |                    |   |                    |
|---|---------------|------------------|--------------------|---|--------------------|
| RNP AR APCH - GPS.  |               | MALSR            |                    | MISSED APPROACH: Climb to 2000 on track 044° to GREKO and hold, continue climb-in-hold to 2000. |                    |
| <p>▼ For uncompensated Baro-VNAV systems, procedure NA below -12°C or above 54°C. For inop ALS, increase RNP 0.18 visibility to 1 3/8 SM.</p> |               |                  |                    |   |                    |
| D-ATIS ARR  | <b>125.95</b> | NEW YORK APP CON | <b>120.8 263.0</b> | LAGUARDIA TOWER   | <b>118.7 263.0</b> |
| D-ATIS DEP  | <b>127.05</b> |                  |                    | GND CON   | <b>121.7 263.0</b> |
|   |               |                  |                    | CLNC DEL  | <b>135.2</b>       |
|   |               |                  |                    | CPDLC   |                    |



NE-2, 23 MAR 2023 to 20 APR 2023

NE-2, 23 MAR 2023 to 20 APR 2023



| CATEGORY    | A | B         | C               | D |
|-------------|---|-----------|-----------------|---|
| RNP 0.18 DA |   | 482/50    | 461 (500-1)     |   |
| RNP 0.30 DA |   | 610-1 1/4 | 589 (600-1 1/4) |   |

## AUTHORIZATION REQUIRED