

(TIFTO7.MCI) 23054

TIFTO SEVEN DEPARTURE

AL-302 (FAA)

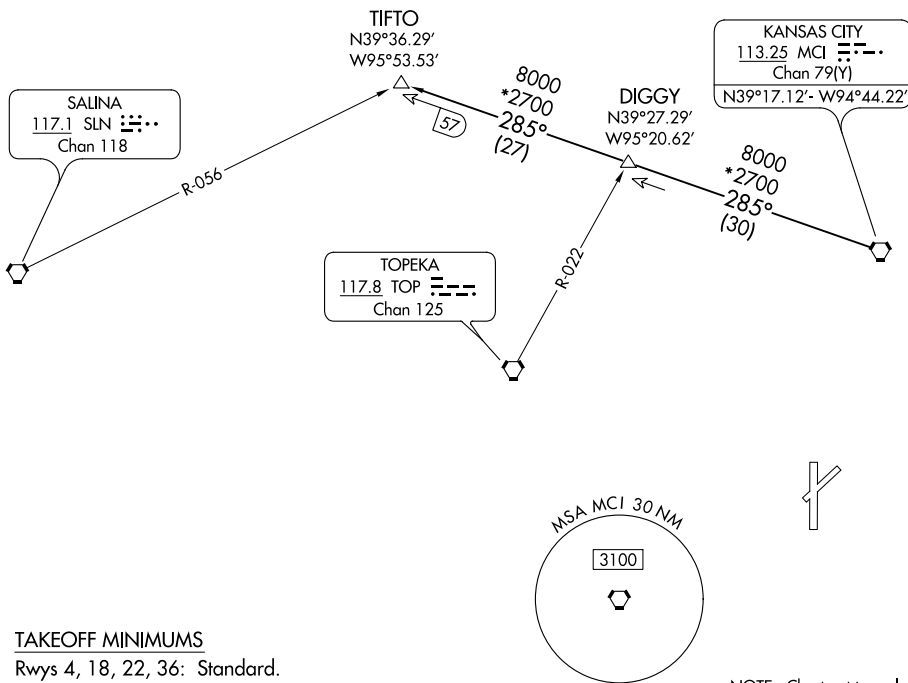
NEW CENTURY AIRCENTER (IXD)

OLATHE, KANSAS

**TOP ALTITUDE:
10000**

RADAR required.

KANSAS CITY DEP CON
118.9 251.075



NC-2, 23 MAR 2023 to 20 APR 2023

NC-2, 23 MAR 2023 to 20 APR 2023

TAKEOFF MINIMUMS

Rwys 4, 18, 22, 36: Standard.

NOTE: Chart not to scale.



DEPARTURE ROUTE DESCRIPTION

TAKEOFF ALL RUNWAYS: Climb on assigned heading for RADAR vectors to appropriate route. Maintain 10000 or as assigned by ATC, expect filed altitude 10 minutes after departure.

TIFTO TRANSITION (TIFTO7.TIFTO): From over MCI VORTAC on MCI R-285 to TIFTO.

TIFTO SEVEN DEPARTURE

(TIFTO7.MCI) 23FEB23

OLATHE, KANSAS
NEW CENTURY AIRCENTER (IXD)