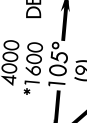
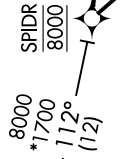
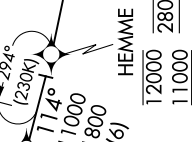


SPIDR FOUR ARRIVAL (RNAV)

NE-3, 23 MAR 2023 to 20 APR 2023

POTOMAC APP CON
126.75 307.2
ATIS
119.15 263.025

MONTEBELLO
MOL



- NOTE: RADAR required.
- NOTE: RNAV 1.
- NOTE: DME/DME/IRU or GPS required.
- NOTE: Turbojet aircraft only.
- NOTE: Maintain last ATC assigned altitude until cleared to "descend via the SPIDR STAR".
- NOTE: ARTCC will issue landing direction assignment (north or south) and Potomac TRACON will issue runway assignments.

ARRIVAL ROUTE DESCRIPTION

MONTEBELLO TRANSITION (MOL.SPIDR4)

LANDING NORTH RWYS 2, 34: From SPIDR on track 149° to DUCKS, then on heading 151° or as assigned by ATC. Expect RADAR vectors to final approach course.

LANDING SOUTH RWYS 16, 20: From SPIDR on track 105° to DEEER, then on heading 081° or as assigned by ATC. Expect RADAR vectors to final approach course.

NOTE: Chart not to scale.

SPIDR FOUR ARRIVAL (RNAV)

(SPIDR.SPIDR4) 10SEP20

NE-3, 23 MAR 2023 to 20 APR 2023