

WAAS CH <b>65919</b> <b>W01A</b>	APP CRS <b>007°</b>	Rwy Idg TDZE <b>511</b> Apt Elev <b>516</b>
--	------------------------	---

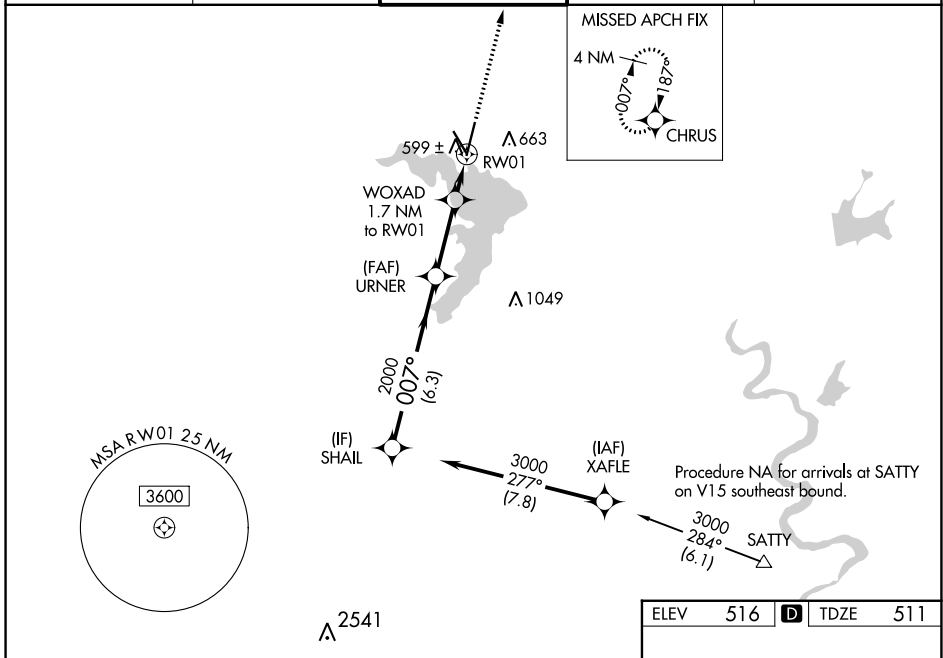
# RNAV (GPS) RWY 1

WACO RGNL (ACT)

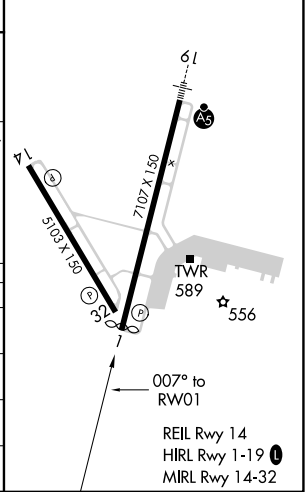
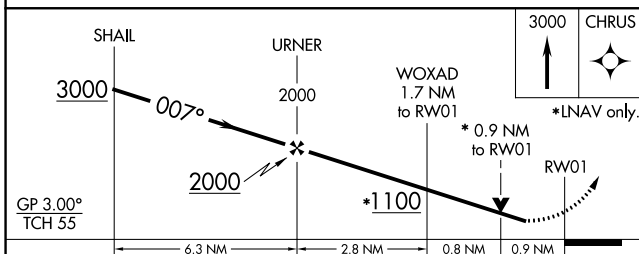
**ASR** For uncompensated Baro-VNAV systems, LNAV/VNAV NA below -7°C (19°F) or above 54°C (130°F). DME/DME RNP-0.3 NA. When local altimeter setting not received, use Mc Gregor Exec altimeter setting and increase all DA 31 feet and all MDA 40 feet; increase LPV all Cats and LNAV/VNAV all Cats visibility 1/8 mile and Circling Cat D 1/4 mile. Baro-VNAV and VDP NA with Mc Gregor Exec altimeter setting. Helicopter visibility reduction below 3/4 SM NA.

**MISSED APPROACH:**  
Climb to 3000 direct CHRUS and hold.

ATIS <b>123.85</b>	WACO APP CON ★ <b>127.65 227.125</b>	WACO TOWER ★ <b>119.3 (CTAF) 0 257.8</b>	GND CON <b>121.9</b>	UNICOM <b>122.95</b>
-----------------------	---	---	-------------------------	-------------------------



ELEV	516	D	TDZE	511
------	-----	---	------	-----



CATEGORY	A	B	C	D
LPV DA		761-3/4	250 (300-3/4)	
LNAV/VNAV DA		782-7/8	271 (300-7/8)	
LNAV MDA		860-1	349 (400-1)	
CIRCLING	940-1 424 (500-1)	980-1 464 (500-1)	1020-1 1/2 504 (600-1 1/2)	1160-2 644 (700-2)

SC-3, 23 MAR 2023 to 20 APR 2023

SC-3, 23 MAR 2023 to 20 APR 2023