

WAAS CH 69420 W32A	APP CRS 322°	Rwy Idg TDZE Apt Elev	5103 516 516
--	------------------------	-----------------------------	---

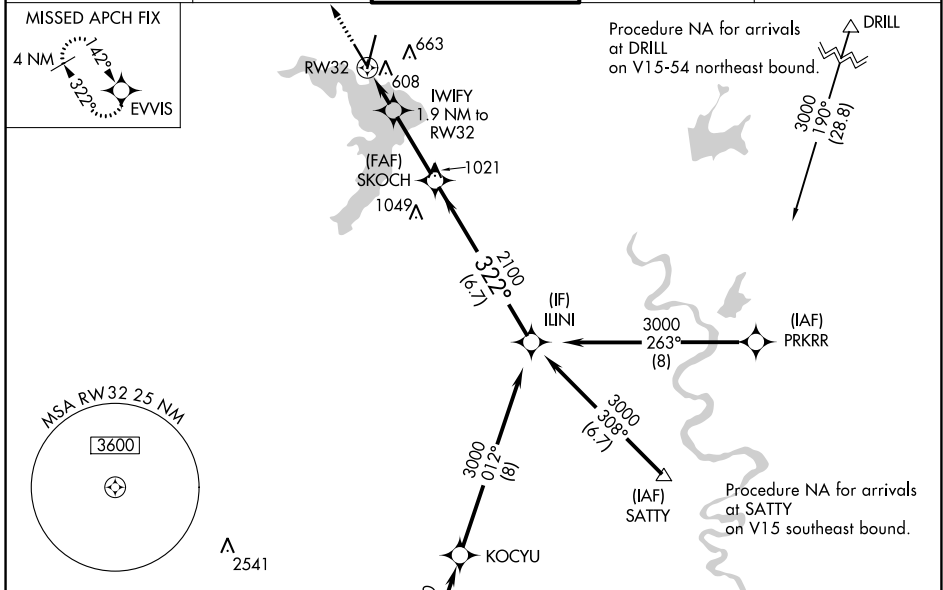
RNAV (GPS) RWY 32

WACO RGNL (ACT)

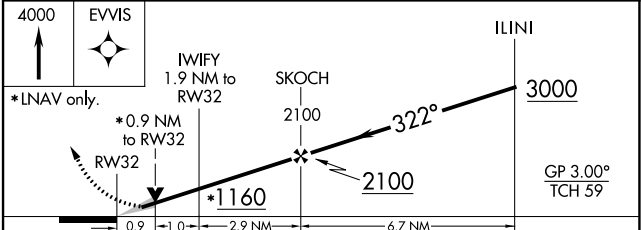
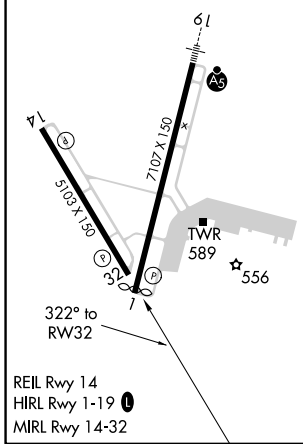
⚠ DME/DME RNP-0.3 NA. When local altimeter setting not received use Mc Gregor Exec altimeter setting and increase all DA 31 feet and all MDA 40 feet; increase LPV and LNAV/VNAV all Cats and LNAV Cats C/D visibility 1/8 mile and Circling Cat D visibility 1/4 mile. For uncompensated Baro-VNAV systems, LNAV/VNAV NA below -13°C (9°F) or above 54°C (130°F). Baro-VNAV NA when using Mc Gregor Exec altimeter setting. VDP NA with Mc Gregor Exec altimeter setting.

MISSED APPROACH:
Climb to 4000 direct EVVIS and hold, continue climb-in-hold to 4000.

ATIS 123.85	WACO APP CON * 127.65 227.125	WACO TOWER * 119.3(CTAF) 257.8	GND CON 121.9	UNICOM 122.95
-----------------------	---	--	-------------------------	-------------------------



ELEV 516	D	TDZE 516
----------	----------	----------



CATEGORY	A	B	C	D
LPV DA		766-3/4	250 (300-3/4)	
LNAV/VNAV DA		773-3/4	257 (300-3/4)	
LNAV MDA		860-1	344 (400-1)	
C CIRCLING	940-1 424 (500-1)	980-1 464 (500-1)	1020-1 1/2 504 (600-1 1/2)	1160-2 644 (700-2)