

VORTAC ACT	APP CRS	Rwy Idg	<b>5103</b>
<b>115.3</b>	<b>141°</b>	TDZE	<b>513</b>
Chan <b>100</b>		Apt Elev	<b>516</b>

# VOR RWY 14

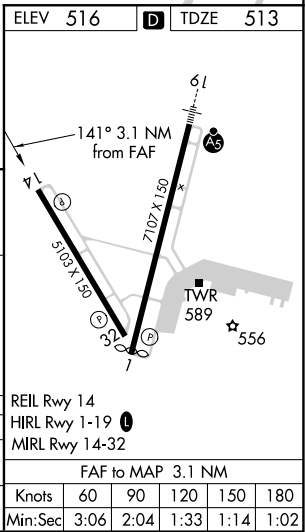
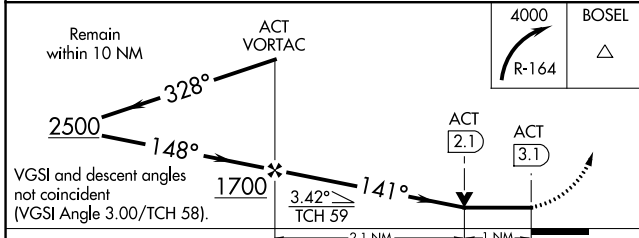
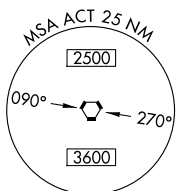
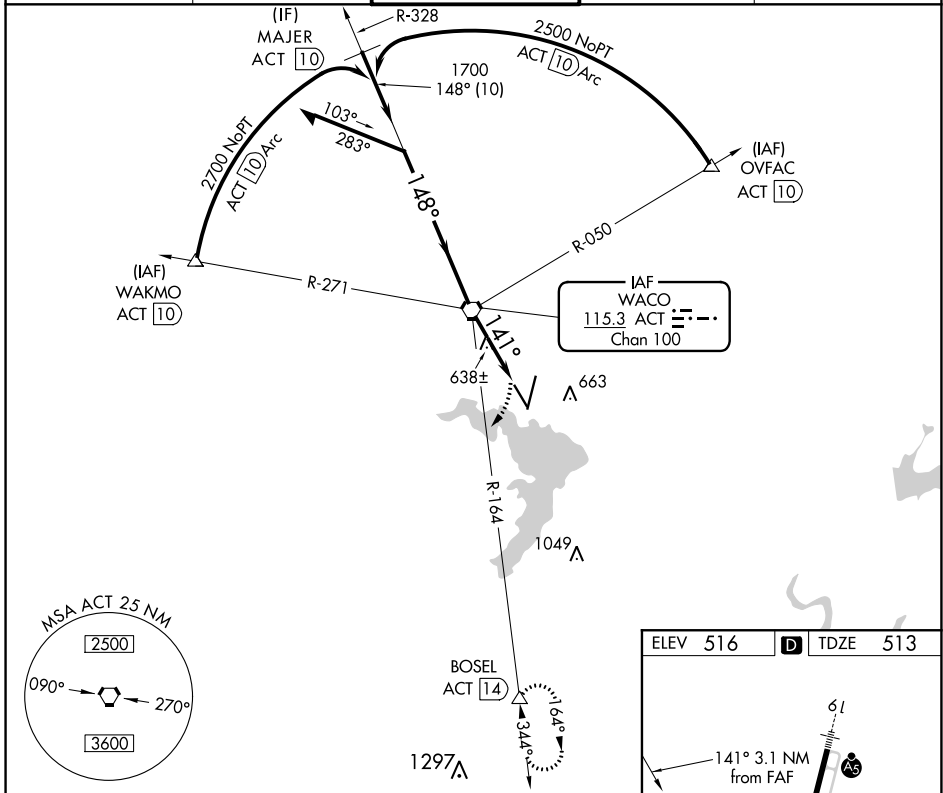
WACO RGNL (ACT)

DME required.

ASR Rwy 14 helicopter visibility reduction below 3/4 SM NA. VDP NA with Mc Gregor Exec altimeter setting. When local altimeter setting not received, use Mc Gregor Exec altimeter setting and increase all MDAs 40 feet; and increase S-14 Cat C/D visibility 1/2 SM and Circling Cat D visibility 1/4 SM.

MISSED APPROACH: Climbing right turn to 4000 on ACT VORTAC R-164 to BOSEL/ACT 14.00 DME and hold, Continue climb-in-hold to 4000.

ATIS	WACO APP CON *	WACO TOWER *	GND CON	UNICOM
<b>123.85</b>	<b>127.65 227.125</b>	<b>119.3(CTAF) 257.8</b>	<b>121.9</b>	<b>122.95</b>



CATEGORY	A	B	C	D
S-14	900-1	387 (400-1)	900-1 1/2	387 (400-1 1/2)
CIRCLING	940-1 424 (500-1)	980-1 464 (500-1)	1020-1 1/2 504 (600-1 1/2)	1160-2 644 (700-2)

FAF to MAP 3.1 NM					
Knots	60	90	120	150	180
Min:Sec	3:06	2:04	1:33	1:14	1:02

SC-3, 23 MAR 2023 to 20 APR 2023

SC-3, 23 MAR 2023 to 20 APR 2023