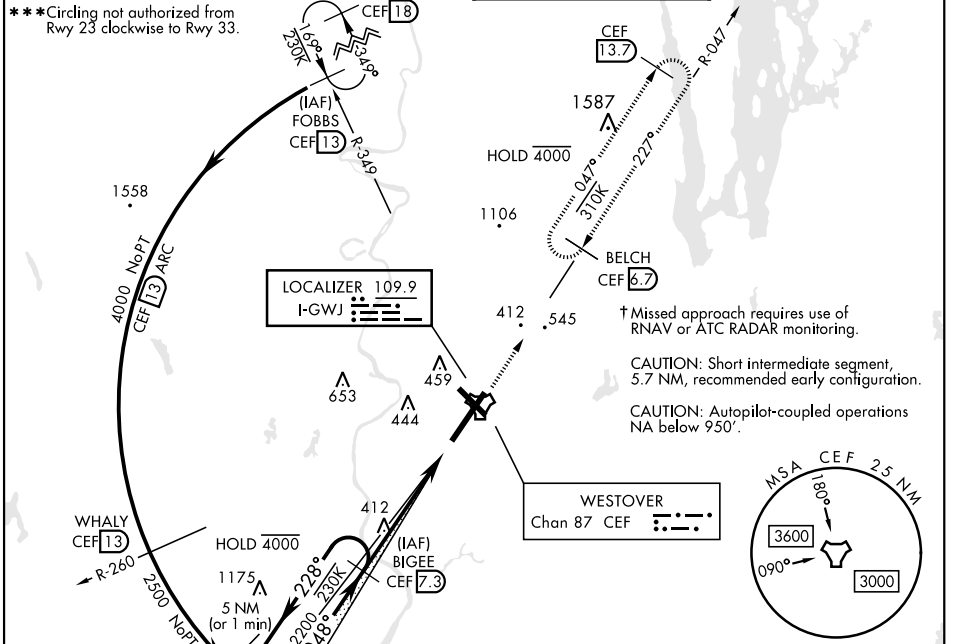


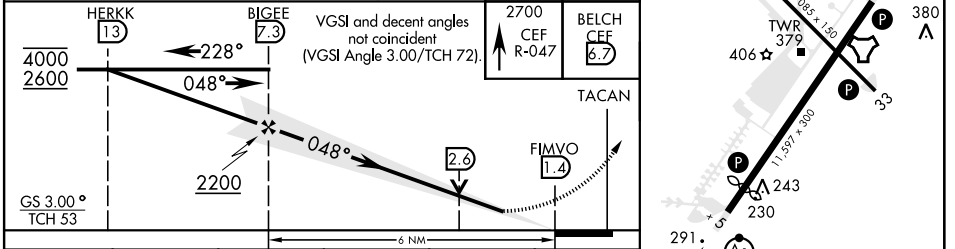
LOC I-GWJ 109.9	APCH CRS 048°	Rwy Idg 10,395 TDZE 237 Arprt Elev 241	AL-447 [USAF]	WESTOVER ARB METROPOLITAN (KCEF)
---------------------------	-------------------------	---	---------------	----------------------------------

DME required * When ALS inop, increase RVR to 40, vis to ¾ mile. ** When ALS inop, increase CAT AB RVR to 55, vis to 1 mile; CAT CDE vis to 1½ miles.	ALSIF-1 	† MISSED APPROACH: Climb to 2700 on hdg 048° to intcp CEF TACAN R-047 direct BELCH and hold, continue climb-in-hold to 2700.
---	-------------	--

ATIS ★ 127.525	BRADLEY APP CON 125.35 281.5	TOWER ★ 134.85 (CTAF) 348.75	GND CON 118.35 275.8
--------------------------	--	--	--------------------------------



EMERG SAFE ALT 100 NM 6400	<table border="1"> <tr> <td>ELEV 241</td> <td>TDZE 237</td> </tr> <tr> <td colspan="2">Rwy 5 Idg 10,395'</td> </tr> </table>	ELEV 241	TDZE 237	Rwy 5 Idg 10,395'	
ELEV 241	TDZE 237				
Rwy 5 Idg 10,395'					



CATEGORY	A	B	C	D	E
S-ILS 5*	437/24		200	(200-½)	
S-LOC 5**	720/24	483 (500-½)	720/50		483 (500-1)
CIRCLING ***	760-1 519 (600-1)	780-1 539 (600-1)	840-1½ 599 (600-1½)	1060-2¾ 819 (900-2¾)	1080-3 839 (900-3)

NE-1, 23 MAR 2023 to 20 APR 2023

NE-1, 23 MAR 2023 to 20 APR 2023