

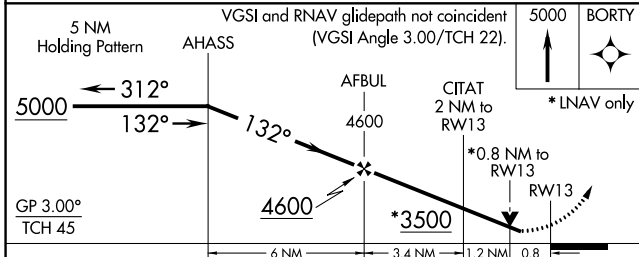
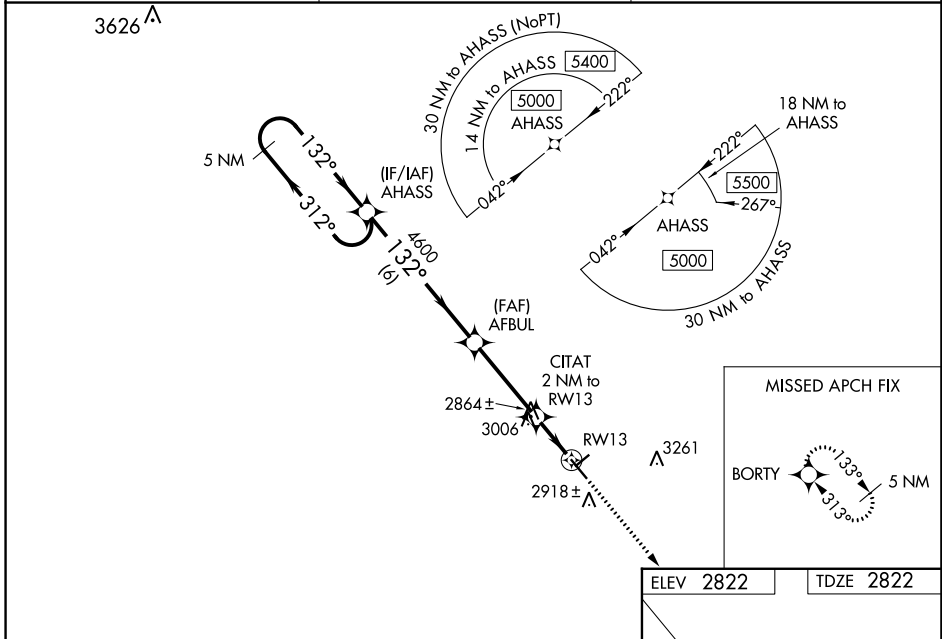
WAAS CH 93831 W13A	APP CRS 132°	Rwy Idg TDZE Apt Elev	5003 2822 2822
--	------------------------	-----------------------------	---

RNAV (GPS) RWY 13

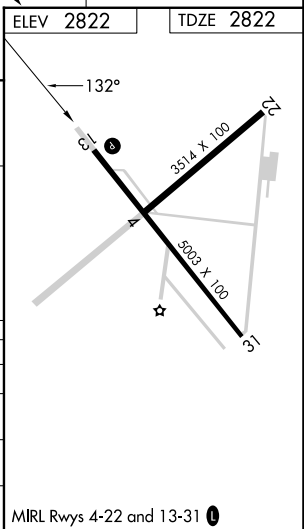
WINKLER COUNTY (INK)

RNP APCH.	<p>▽ Baro-VNAV NA when using Pecos altimeter setting. For uncompensated Baro-VNAV systems, LNAV/VNAV NA below -20°C or above 54°C. VDP NA with Pecos altimeter setting.</p> <p>▲ Helicopter visibility reduction below ¾ SM NA. When local altimeter setting not received, use Pecos altimeter setting: Increase DA to 3167 feet and LPV and LNAV/VNAV all Cats visibility ¾ SM; increase all MDAs 100 feet and LNAV and Circling Cat C visibility ¼ SM.</p>	MISSED APPROACH: Climb to 5000 direct BORTY and hold.
-----------	--	--

ASOS 118.325	FORT WORTH CENTER 133.1 298.95	UNICOM 123.0 (CTAF) 0
------------------------	--	---------------------------------



CATEGORY	A	B	C	D
LPV DA	3072-¾	250 (300-¾)		NA
LNAV/VNAV DA	3072-¾	250 (300-¾)		NA
LNAV MDA	3320-1	498 (500-1)	3320-1⅜ 498 (500-1⅜)	NA
CIRCLING	3320-1	498 (500-1)	3580-2¼ 758 (800-2¼)	NA



SC-3, 23 MAR 2023 to 20 APR 2023

SC-3, 23 MAR 2023 to 20 APR 2023