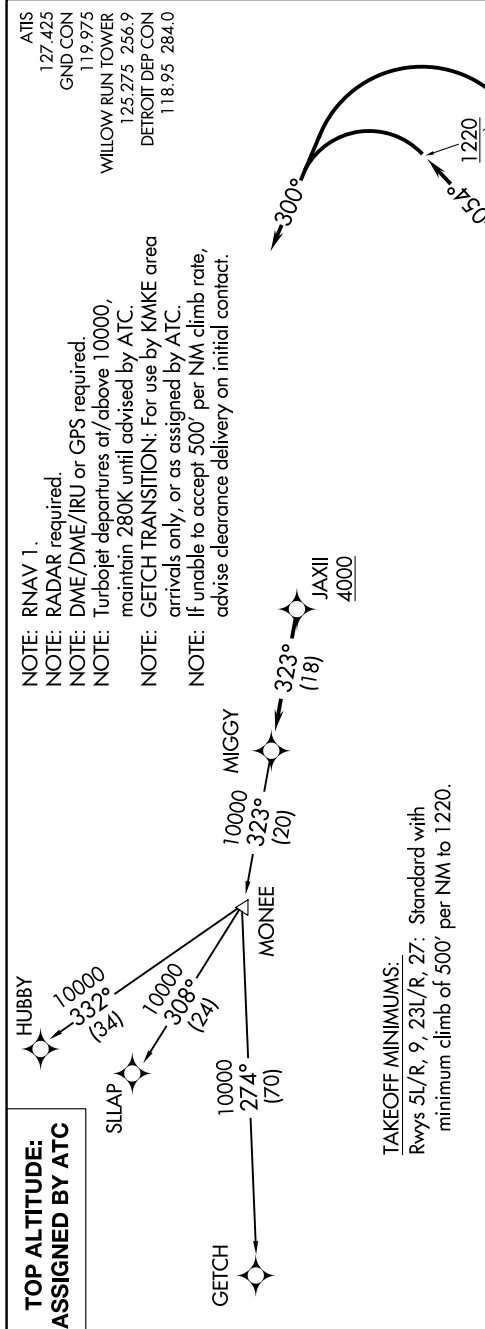


MIGGY TWO DEPARTURE (RNAV)

AL-467 (FAA)

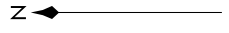
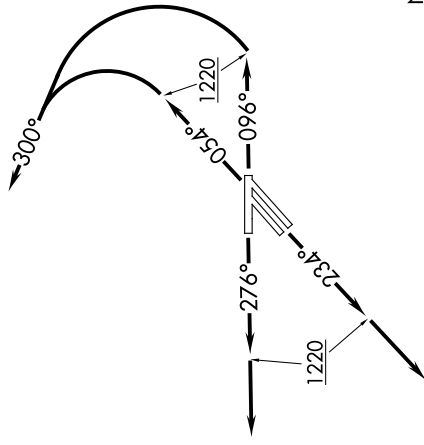
DETROIT, MICHIGAN

EC-1, 23 MAR 2023 to 20 APR 2023



- NOTE: RNAV 1.
- NOTE: RADAR required.
- NOTE: DME/DME/IRU or GPS required.
- NOTE: Turbojet departures at/above 10000, maintain 280K until advised by ATC.
- NOTE: GETCH TRANSITION: For use by KMIKE area arrivals only, or as assigned by ATC.
- NOTE: If unable to accept 500' per NM climb rate, advise clearance delivery on initial contact.

ATIS 127.425  
 GND CON 119.975  
 WILLOW RUN TOWER 125.275 256.9  
 DETROIT DEP CON 118.95 284.0



NOTE: Chart not to scale.

DEPARTURE ROUTE DESCRIPTION

**TAKEOFF RUNWAYS 5L/R:** Climb on heading 054° to 1220, then left turn heading 300° for RADAR vectors to cross JAXII at or above 4000, thence...  
**TAKEOFF RUNWAY 9:** Climb on heading 096° to 1220, then left turn heading 300° for RADAR vectors to cross JAXII at or above 4000, thence...  
**TAKEOFF RUNWAYS 23L/R:** Climb on heading 234° to 1220, then on heading 234° for RADAR vectors to cross JAXII at or above 4000, thence...  
**TAKEOFF RUNWAY 27:** Climb on heading 276° to 1220, then on heading 276° for RADAR vectors to cross JAXII at or above 4000, thence...  
 ...on track 323° to MIGGY, then on (transition). Maintain ATC assigned altitude, expect filed altitude 10 minutes after departure.

- GETCH TRANSITION (MIGGY2.GETCH):
- HUBBY TRANSITION (MIGGY2.HUBBY):
- SILAP TRANSITION (MIGGY2.SILAP):

**TAKEOFF MINIMUMS:**  
 Rwy's 5L/R, 9, 23L/R, 27: Standard with minimum climb of 500' per NM to 1220.

EC-1, 23 MAR 2023 to 20 APR 2023