

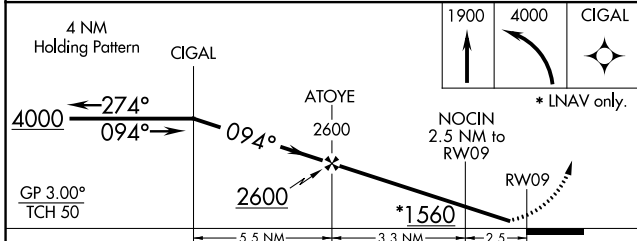
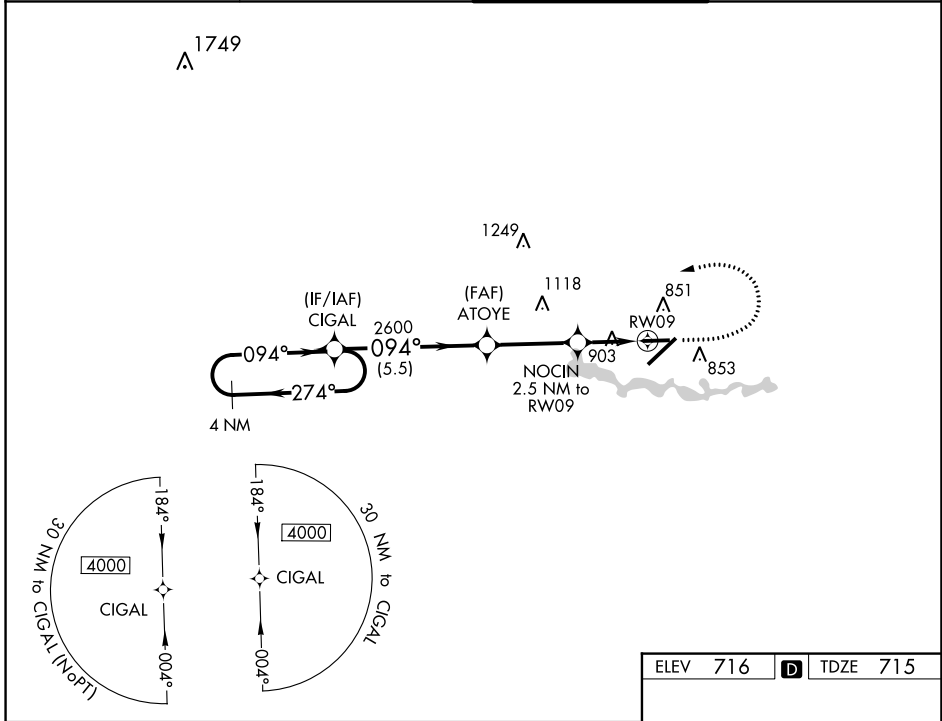
WAAS CH <b>73035</b> <b>W09A</b>	APP CRS <b>094°</b>	Rwy Idg TDZE Apt Elev	<b>4424</b> <b>715</b> <b>716</b>
--	------------------------	-----------------------------	---

# RNAV (GPS) RWY 9

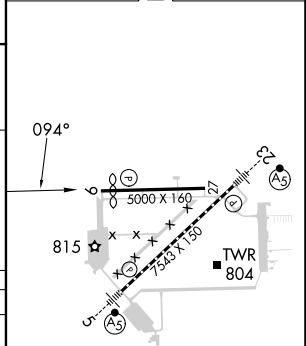
WILLOW RUN (YIP)

**⚠** DME/DME RNP-0.3 NA. Helicopter visibility reduction below 1 SM NA. For uncompensated Baro-VNAV systems, LNAV/VNAV NA below -19°C (-2°F) or above 54°C (130°F). MISSED APPROACH: Climb to 1900 then climbing left turn to 4000 direct CIGAL and hold.

ATIS <b>127.425</b>	DETROIT APP CON <b>118.95 284.0</b>	WILLOW RUN TOWER <b>125.275 256.9</b>	GND CON <b>119.975</b>
------------------------	--	--	---------------------------



ELEV 716	<b>D</b>	TDZE 715
----------	----------	----------



CATEGORY	A	B	C	D
LPV DA	965-1 250 (300-1)			
LNAV/VNAV DA	1197-1 <sup>5</sup> / <sub>8</sub> 482 (500-1 <sup>5</sup> / <sub>8</sub> )			
LNAV MDA	1160-1 445 (500-1)	1160-1 <sup>3</sup> / <sub>8</sub> 445 (500-1 <sup>3</sup> / <sub>8</sub> )		
<b>C</b> CIRCLING	1220-1 504 (600-1)	1220-1 <sup>1</sup> / <sub>2</sub> 504 (600-1 <sup>1</sup> / <sub>2</sub> )	1400-2 <sup>1</sup> / <sub>4</sub> 684 (700-2 <sup>1</sup> / <sub>4</sub> )	

TDZ/CL Rwy 5  
HIRL Rwy 5-23  
MIRL Rwy 9-27

EC-1, 23 MAR 2023 to 20 APR 2023

EC-1, 23 MAR 2023 to 20 APR 2023