

(ZETTR3.ZETTR) 19339

ZETTR THREE DEPARTURE (RNAV)

AL-467 (FAA)

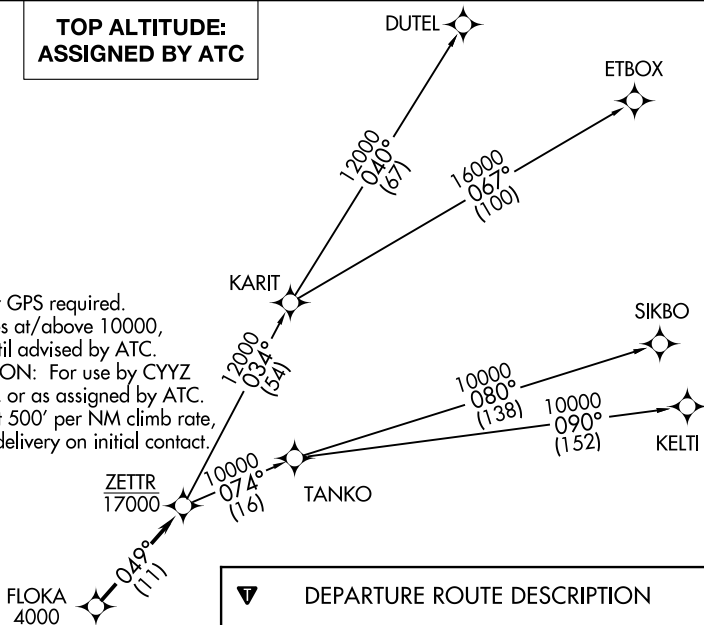
WILLOW RUN (YIP)

DETROIT, MICHIGAN

ATIS
127.425
GND CON
119.975
WILLOW RUN TOWER
125.275 256.9
DETROIT DEP CON
118.95 284.0

**TOP ALTITUDE:
ASSIGNED BY ATC**

- NOTE: RNAV 1.
- NOTE: RADAR required.
- NOTE: DME/DME/IRU or GPS required.
- NOTE: Turbojet departures at/above 10000, maintain 280K until advised by ATC.
- NOTE: TANKO TRANSITION: For use by CYYZ area arrivals only, or as assigned by ATC.
- NOTE: If unable to accept 500' per NM climb rate, advise clearance delivery on initial contact.



DEPARTURE ROUTE DESCRIPTION

TAKEOFF RUNWAYS 5L/R: Climb on heading 054° to 1220, then left turn heading 300° for RADAR vectors to cross FLOKA at or above 4000, thence....

TAKEOFF RUNWAY 9: Climb on heading 096° to 1220, then left turn heading 300° for RADAR vectors to cross FLOKA at or above 4000, thence....

TAKEOFF RUNWAYS 23L/R: Climb on heading 234° to 1220, then on heading 234° for RADAR vectors to cross FLOKA at or above 4000, thence....

TAKEOFF RUNWAY 27: Climb on heading 276° to 1220, then on heading 276° for RADAR vectors to cross FLOKA at or above 4000, thence....

....on track 049° to cross ZETTR at or below 17000, then on (transition). Maintain ATC assigned altitude, expect filed altitude 10 minutes after departure.

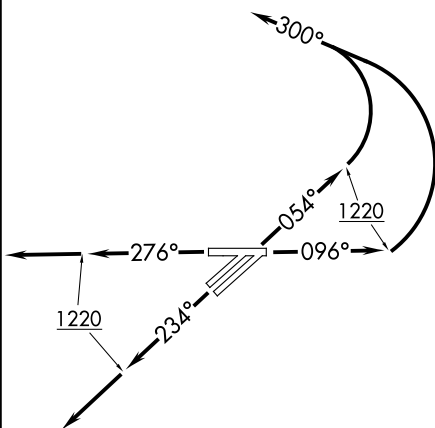
DUTEL TRANSITION (ZETTR3.DUTEL):

ETBOX TRANSITION (ZETTR3.ETBOX):

KELTI TRANSITION (ZETTR3.KELTI):

SIKBO TRANSITION (ZETTR3.SIKBO):

TANKO TRANSITION (ZETTR3.TANKO):



TAKEOFF MINIMUMS:

Rwys 5L/R, 9, 23L/R, 27: Standard with minimum climb of 500' per NM to 1220.

NOTE: Chart not to scale.

ZETTR THREE DEPARTURE (RNAV)
(ZETTR3.ZETTR) 05DEC19

DETROIT, MICHIGAN
WILLOW RUN (YIP)

EC-1, 23 MAR 2023 to 20 APR 2023