

# ILS or LOC RWY 4


LYNCHBURG RGNL/PRESTON GLENN FLD (LYH)

LOC I-LYH <b>110.1</b>	APP CRS <b>036°</b>	Rwy Idg <b>6800</b>	TDZE <b>905</b>
		Apt Elev <b>938</b>	

ADF required for LOC only. DME required.

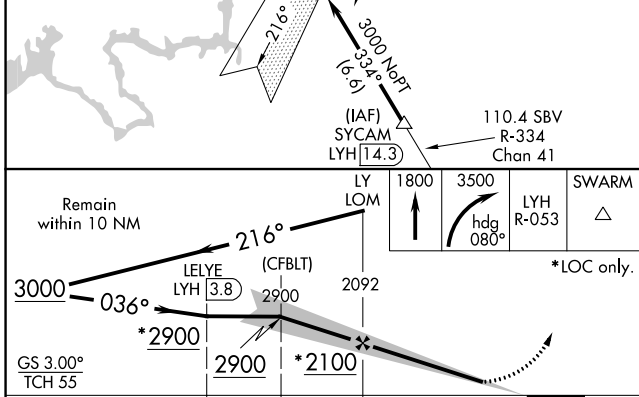
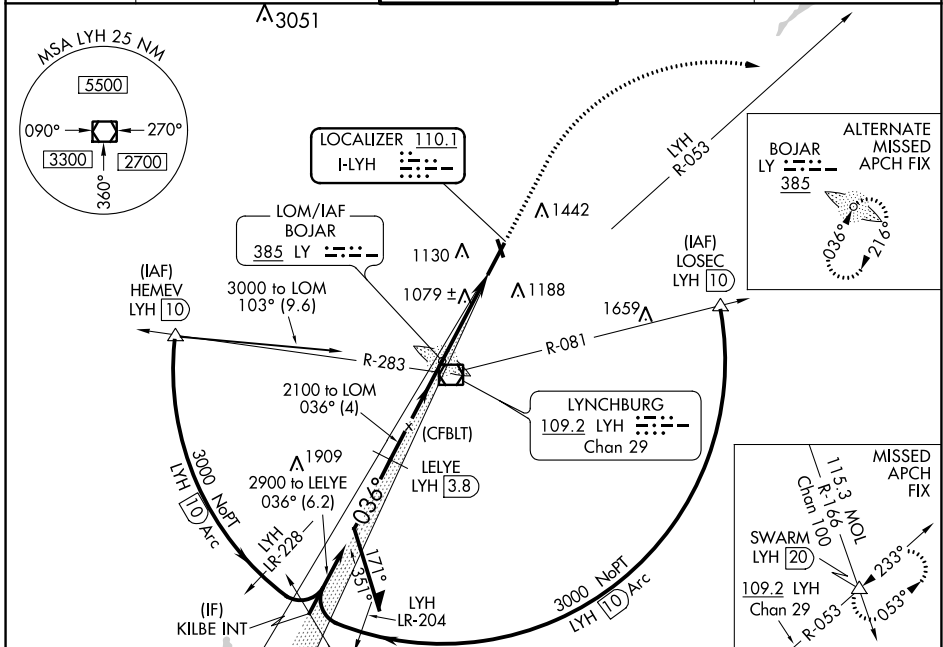
⚠ Circling Rwy 17 NA at night. DME from LYH VOR/DME. Simultaneous reception of I-LYH and LYH DME required.

⚠ \*\* RVR 1800 authorized with use of FD or AP or HUD to DA.

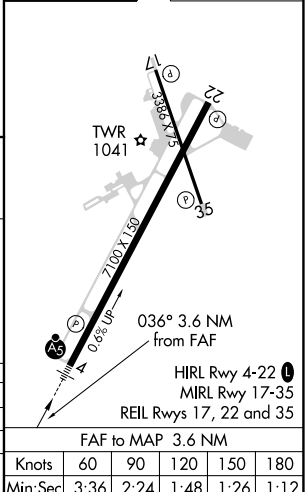
MALS R 

MISSED APPROACH: Climb to 1800 then climbing right turn to 3500 on heading 080° and on LYH VOR/DME R-053 to SWARM INT/LYH 20 DME and hold.

ATIS <b>119.8</b>	ROANOKE APP CON <b>135.0 254.325</b>	LYNCHBURG TOWER ★ <b>127.65 (CTAF) 0 257.8</b>	GND CON <b>121.9</b>	UNICOM <b>122.95</b>
----------------------	---	---	-------------------------	-------------------------



ELEV 938	D	TDZE 905
----------	---	----------



CATEGORY	A	B	C	D	Knots	60	90	120	150	180
S-ILS 4 **	1105/24				200 (200-½)					
S-LOC 4	1320/24	415 (400-½)	1320/40	415 (400-¾)						
CIRCLING	1660-1	1780-1¼	1800-2½	1800-2¾	60	3:36	2:24	1:48	1:26	1:12
	722 (800-1)	842 (900-1¼)	862 (900-2½)	862 (900-2¾)	90					

# ILS or LOC RWY 4

NE-3, 23 MAR 2023 to 20 APR 2023

NE-3, 23 MAR 2023 to 20 APR 2023