

(LIBRT3.LIBRT) 22083

AL-499 (FAA)

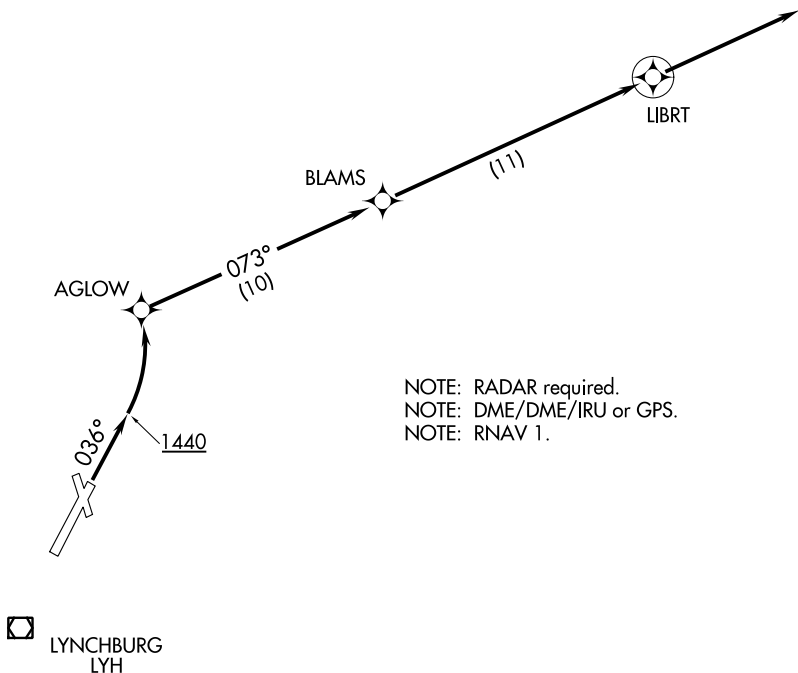
LYNCHBURG RGNL/PRESTON GLENN FLD (LYH)  
LYNCHBURG, VA

# LIBRT THREE DEPARTURE (RNAV)

ATIS 119.8  
GND CON  
121.9  
LYNCHBURG TOWER ★  
127.65 (CTAF) 257.8  
ROANOKE DEP CON  
135.0 254.325

**TAKEOFF MINIMUMS:**  
Rwys 17, 22, 35: NA-ATC.  
Rwy 4: Standard with minimum  
climb of 500' per NM to 4000.

**TOP ALTITUDE:**  
**4000**



NOTE: Chart not to scale.



## DEPARTURE ROUTE DESCRIPTION

TAKEOFF RUNWAY 4: Climb heading 036° to 1440, then left turn direct AGLOW, then on depicted route to LIBRT, then on heading 073°, expect vectors on course. Maintain 4000 or as assigned by ATC. Expect filed altitude 10 minutes after departure.

**LIBRT THREE DEPARTURE (RNAV)**  
(LIBRT3.LIBRT) 03JAN19

LYNCHBURG, VA  
LYNCHBURG RGNL/PRESTON GLENN FLD (LYH)

NE-3, 23 MAR 2023 to 20 APR 2023

NE-3, 23 MAR 2023 to 20 APR 2023